

Financial Markets and Unemployment*

Tommaso Monacelli
Università Bocconi

Vincenzo Quadrini
University of Southern California

Antonella Trigari
Università Bocconi

December 29, 2011

Abstract

We study the importance of financial markets for (un)employment fluctuations in a model with matching frictions where firms issue debt under limited enforcement. Higher debt allows employers to bargain lower wages which in turn increases the incentive to create jobs. The transmission mechanism of ‘credit shocks’ is different from the typical credit channel and the model can explain why firms cut hiring after a credit contraction even if they do not have shortage of funds for hiring. The empirical relevance of these shocks is validated by the structural estimation of the model. The theoretical predictions are also consistent with the estimation of a structural VAR whose identifying restrictions are derived from the theoretical model.

Keywords: Limited enforcement, wage bargaining, unemployment, credit shocks.

JEL classification: E24, E32, E44.

*We thank Wouter Den Haan, John Haltiwanger, Nicolas Petrosky-Nadeau and Alan Sutherland for insightful comments and seminar participants at Atlanta Fed, Boston Fed, Ente Luigi Einaudi, European Summer Symposium in International Macroeconomics, European University Institute, Federal Reserve Board, NBER Summer Institute, New York Fed, NYU Abu Dhabi, Ohio State University, Philadelphia Fed, Princeton University, St. Louis Fed, Stanford University, University of Bonn, University of Cergy-Pontoise, University of Lausanne, University of Milano-Bicocca, University of Porto, University of Southern California, University of Wisconsin.

1 Introduction

The recent financial turmoil has been associated with a severe increase in unemployment. In the United States the number of unemployed workers jumped from 5.5 percent of the labor force to about 10 percent and continued to stay close to 9 percent after four years the beginning of the recession. Because the financial sector has been at the center stage of the recent crisis and the growth rate in the volume of credit has dropped significantly from its pick (see top panel of Figure 1), it is natural to ask whether the contraction of credit has played some role in the unemployment hike and sluggish recovery.

One possible channel through which de-leveraging could affect the real economy is by forcing employers to cut investment and hiring because of financing difficulties. This is the typical ‘credit channel’ formalized in Bernanke and Gertler (1989) and Kiyotaki and Moore (1997). Although there is compelling evidence that the credit channel played an important role during the crisis when the volume of credit contracted sharply, the liquidity dried up and the interest rate spreads widened, there is less evidence that this channel has been important for the sluggish recovery of the labor market after the initial drop in employment. As shown in the bottom panel of Figure 1, the liquidity held by US businesses contracted during the crisis, consistent with the view of a credit crunch. However, after the initial drop, the liquidity of nonfinancial businesses quickly rebounded and shortly after the crisis firms were holding more liquidity than before the crisis.¹ This observation casts some doubts that the main explanation for the sluggish recovery of the labor market can be found in the lack of funds to finance investment and hiring.

Should we then conclude that de-leveraging is not important for understanding the sluggish recovery of the labor market? In this paper we argue that, even if firms have enough funds to sustain hiring, de-leveraging can still induce a decline in employment that is very persistent. This is not because lower debt impairs the hiring ability of firms but because, keeping everything else constant, it places workers in a more favorable position in the negotiation of wages. Thus, the availability of credit affects the ‘willingness’, not (necessarily) the ‘ability’ to hire new workers.

To illustrate this mechanism we use a theoretical framework that shares the basic ingredients of the model studied in Pissarides (1987) where firms

¹A similar pattern applies to firms’ profits. Profits growth fell during the crisis, but then quickly rebounded to the pre-crisis level, already a historically high peak.

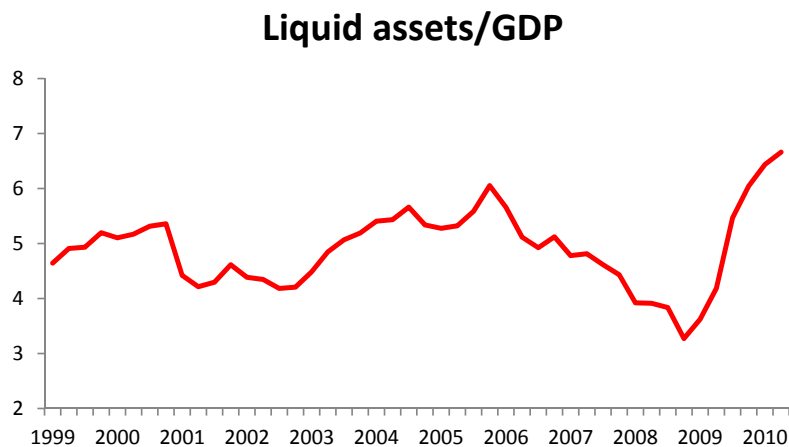
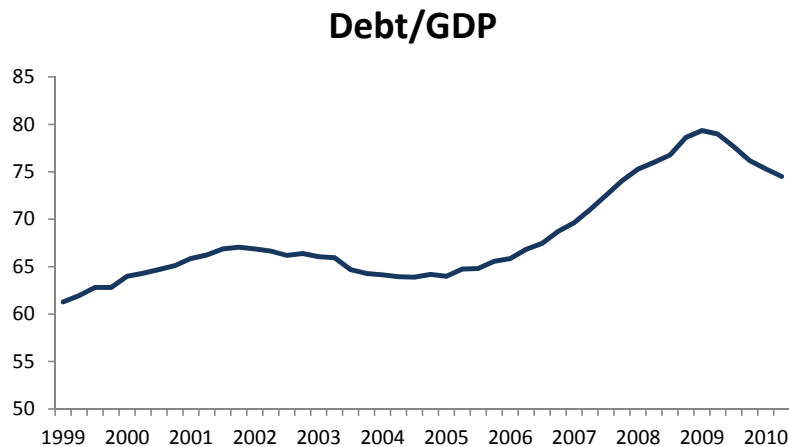


Figure 1: Liquidity and debt in the US nonfinancial business sector. *Liquidity* is the sum of foreign deposits, checkable deposits and currency, time and savings deposits. *Debt* is defined as credit markets instruments. Data is from the Flows of Funds Accounts.

are created through the random matching of job vacancies and unemployed workers. We extend the model in two directions. First, we allow firms to issue debt under limited enforcement. Second, we introduce an additional source of business cycle fluctuation which affects directly the enforcement constraint of borrowers and the availability of credit.

Because of the matching frictions and the wage determination process based on bargaining, firms prefer to issue debt even if there is no fixed or

working capital that needs to be financed. The preference for debt derives exclusively from the wage determination process based on bargaining, whose empirical relevance is shown in Hall and Krueger (2010). Higher debt reduces the net bargaining surplus which in turn reduces the wages paid to workers. This creates an incentive for employers to borrow, breaking the Modigliani and Miller (1958) result. The goal of the paper is to study how changes in the borrowing limit affect the dynamics of the labor market.

Central to our mechanism is the firm’s capital structure as a bargaining tool in the wage determination process. Both anecdotal and statistical evidence point to this channel. Consider the anecdotal evidence first. An illustrative example, also suggested in Matsa (2010), is provided by the case of the *New York Metro Transit Authority*. In 2004 the company realized an unexpected 1 billion dollars surplus, largely from a real estate boom. The Union, however, claimed rights to the surplus demanding a 24 percent pay raise over three years.² Another example comes from Delta Airlines. The company weathered the 9/11 airline crisis but its excess of liquidity allegedly reduced the need to cut costs. This hurt the firm’s bargaining position with workers and three years after 9/11 it faced severe financial challenges.³

The idea that debt allows employers to improve their bargaining position is supported by several empirical studies in corporate finance. Bronars and Deere (1991) document a positive correlation between leverage and labor bargaining power, proxied by the degree of unionization. Matsa (2010) finds that firms with greater exposure to (union) bargaining power have a capital structure more skewed towards debt. Atanassov and Kim (2009) find that

²From *The New York Times*, *Transit Strike Deadline: How extra Money Complicates Transit Pay Negotiations*, 12/15/2005: “The unexpected windfall was supposed to be a boom[...] but has instead become a liability[...] How, union leaders have asked, can the authority boast of such a surplus and not offer raises of more than 3 percent a year? Why aren’t wages going up more?”. In a similar vein: “The magnitude of the surplus [...] has set this year’s negotiations apart from prior ones, said John E. Zuccotti, a former first deputy mayor. It’s a much weaker position than the position the M.T.A. is normally in: We’re broke and we haven’t gotten any money [...]. The playing field is somewhat different. They haven’t got that defense”.

³From *The Wall Street Journal*, *Cross Winds: How Delta’s Cash Cushion Pushed It Onto Wrong Course*, 10/29/2004: “In hindsight, it is clear now that Delta’s pile of cash and position as the strongest carrier after 9/11 lured the company’s pilots and top managers onto a dire course. Delta’s focus on boosting liquidity turned out to be its greatest blessing and curse, helping the company survive 9/11 relatively unscathed but also putting off badly needed overhauls to cut costs”.

strong union laws are less effective in preventing large-scale layoffs when firms have higher financial leverage. Gorton and Schmid (2004) study the impact of German co-determination laws on firms' labor decisions and find that firms that are subject to these laws exhibit greater leverage ratios. Benmelech, Bergman and Enriquez (2011) show that firms under financial distress are able to extract better concession from labor using a unique data set for the airline industry.

All the aforementioned studies suggest that firms may use financial leverage strategically in order to contrast the bargaining power of workers. Although there are theoretical studies in the micro-corporate literature that investigate this mechanism (see Perotti and Spier (1993), and Dasgupta and Sengupta (1993)), the implications for employment dynamics at the macroeconomic level have not been fully explored. The goal of this paper is to investigate these implications. In particular, we study how the labor market responds to a shock that affects directly the availability of credit for employers. This shock resembles the 'financial shock' studied in Jermann and Quadrini (2012) but the transmission mechanism is different. While in Jermann and Quadrini the financial shock is transmitted through the standard credit channel (higher cost of financing employment), in the current paper the financing cost remains constant over time. Instead, the reduction in borrowing places firms in a less favorable bargaining position with workers and, as a result, they create fewer jobs.

Credit shocks can generate sizable employment fluctuations in our model. Furthermore, as long as the credit contraction is persistent—a robust feature of the data—the impact on the labor market is long-lasting. In this vein, the properties of the model are consistent with recent findings that recessions associated with financial crisis are more persistent than recessions associated with systemic financial difficulties. See IMF (2009), Claessens, Kose, and Terrones (2008), Reinhart and Rogoff (2009). Models of the credit channel where there are frictions in the substitution between equity and debt can generate large macroeconomic responses to credit contractions in the short-run but, typically, they are not very persistent. In the short-run the responses could be large because it is costly to replace debt with equity. However, once the substitution has taken place, which usually happens relatively quickly, the lower debt is no longer critical for hiring and investment decisions.

There are other papers in the macro-labor literature that embed financial mechanisms in search and matching models. Chugh (2009) and Petrosky-Nadeau (2009) are two recent contributions. The transmission mechanism

proposed by these papers is still based on the typical credit channel where firms could be financially constrained and the cost of financing new vacancies plays a central role in the transmission of shocks. Also related is Wasmer and Weil (2004), which considers an environment where bargaining is not between workers and firms but between entrepreneurs and financiers. In this model financiers are needed to finance the cost of posting a vacancy and the surplus extracted by financiers is similar to the cost of financing investments. Thus, the central mechanism is still of the credit channel type.⁴

By emphasizing that other contributions are based on the typical credit channel, we are not claiming that this channel is irrelevant or less important. Furthermore, the credit channel could also play a role within our mechanism: if firms anticipate the possibility of future tighter constraints, they may increase savings and hoard liquidity for precautionary reasons. Then, by holding more liquidity (and lower net liabilities), firms will be in less favorable bargaining position with workers. Although in our model firms do not display precautionary behavior, we can capture the higher precautionary savings in reduced form through a tightening of the enforcement constraint.⁵

In order to assess the empirical relevance of credit shocks for employment fluctuations, we conduct a structural estimation of the model using Bayesian methods. The estimation shows that credit shocks contribute significantly to employment fluctuations in general and to the sluggish labor market recovery experienced in the aftermath of the recent financial crisis. We also estimate a structural VAR where the shocks are identified using short-term restrictions derived from the theoretical model. We find that the response of employment to credit shocks is statistically significant and economically sizable. Although the VAR analysis does not allow us to fully separate the standard credit channel from the channel emphasized in this paper, the empirical results are consistent with the predictions of the model.

⁴Wasmer and Weil (2004) also discuss the possibility of extending the model with wage bargaining. However, the analysis with wage bargaining is not fully explored in the paper.

⁵More generally, we do not claim that our mechanism is the only possible explanation for the sluggish recovery. As it is typically the case, business cycle fluctuations result from multiple sources and possible explanations for the jobless recovery include the mismatch between job openings and the skills of the idle labor force (Elsby, Hobijn, and Sahin (2010) and Kocherlakota (2010)) and households de-leveraging (Mian and Sufi (2011)). Although our paper emphasizes a different mechanism, in the estimation of the model we allow for alternative shocks that in principle could capture some of the alternative mechanisms.

2 Model

There is a continuum of agents of total mass 1 with lifetime utility $\mathbb{E}_0 \sum_{t=0}^{\infty} \beta^t c_t$. At any point in time agents can be employed or unemployed. They save in two types of assets: shares of firms and bonds. Risk neutrality implies that the expected return from both assets is equal to $1/\beta - 1$. Therefore, the net interest rate is constant and equal to $r = 1/\beta - 1$.

Firms: Firms are created through the matching of a posted vacancy and a worker. Starting in the next period, a new firm produces output z_t until the match is separated. Separation arises with probability λ . An unemployed worker cannot be self-employed but needs to search (costlessly) for a job. The number of matches is determined by the function $m(v_t, u_t)$, where v_t is the number of vacancies posted during the period and u_t is the number of unemployed workers. The probability that a vacancy is filled is $q_t = m(v_t, u_t)/v_t$ and the probability that an unemployed worker finds a job is $p_t = m(v_t, u_t)/u_t$.

At any point in time firms are characterized by three states: a productivity z_t , an indicator of the financial conditions ϕ_t that will be described below, and a stock of debt b_t . The productivity z_t and the financial state ϕ_t are exogenous stochastic variables, common to all firms (aggregate shocks). The stock of debt b_t is chosen endogenously. Although firms could choose different levels of debt, in equilibrium they all choose the same b_t .

The dividend paid to the owners of the firm (shareholders) is defined by the budget constraint

$$d_t = z_t - w_t - b_t + \frac{b_{t+1}}{R},$$

where R is the gross interest rate charged on the debt. As we will see, R is different from $1 + r$ because of the possibility of default when the match is separated.

Timing: If a vacancy is filled, a new firm is created. The new firm starts producing in the next period and, therefore, there is no wage bargaining in the current period. However, before entering the next period, the newly created firm chooses the debt b_{t+1} and pays the dividend $d_t = b_{t+1}/R_t$ (the initial debt b_t is zero). There is no separation until the next period. Once the new firm enters the next period, it becomes an incumbent firm.

An incumbent firm starts with a stock of debt b_t inherited from the previous period. In addition, it knows the current productivity z_t and the financial variable ϕ_t . Given the states, the firm bargains the wage w_t with the worker and output z_t is produced. The choice of the new debt b_{t+1} and the payment of dividends arise after wage bargaining. After the payments of dividends and wages and after contracting the new debt, the firm observes whether the match is separated. It is at this point that the firm chooses whether to default. Therefore, each period can be divided in three sequential steps: (i) wage bargaining, (ii) financial decision, (iii) default. These sequential steps are illustrated in Figure 2.

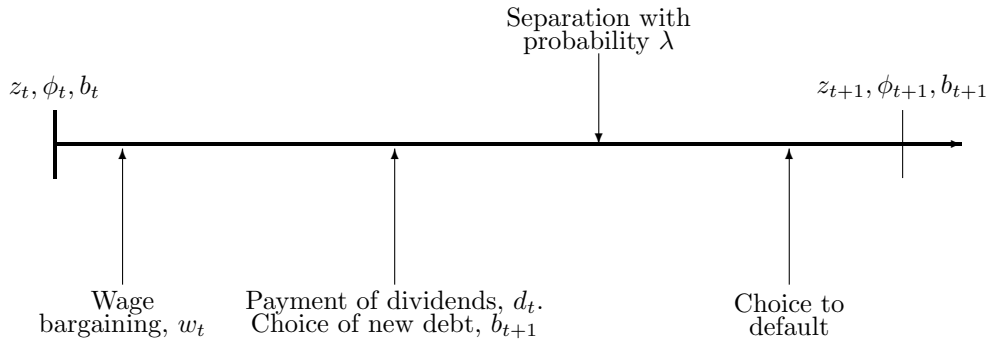


Figure 2: Timing for an incumbent firm

Few remarks: Before continuing, it will be helpful to emphasize the importance of some of our assumptions. As we will see, the sequential timing of decisions for an *incumbent* firm is irrelevant for the dynamic properties of employment. For example, the alternative assumption that incumbent firms choose the new debt before or jointly with the bargaining of wages will not affect the dynamics of employment. For *new* firms, instead, the assumption that the debt is chosen in the current period while wage bargaining does not take place until the next period is crucial for the results. As an alternative, we could assume that bargaining takes place in the same period in which a vacancy is filled as long as the choice of debt is made before going to the bargaining table with the new worker. For presentation purposes, we assumed

that the debt is raised after matching with a worker (but before bargaining the wage). Alternatively, we could assume that the debt is raised before posting a vacancy but this would not affect the results. What is crucial is that the debt of a new firm is raised *before* bargaining for the first time with the new worker.

The second point we would like to stress is that the assumption that wages are bargained in every period is not important. We adopted this assumption in order to remain as close as possible to the standard matching model (Pissarides (1987)). In Section 4 we show that the employment dynamics do not change if we make different assumptions about the frequency of bargaining. All we need is that there is bargaining when a new worker is hired.

Finally, the assumption that firms employ a single worker is not crucial. As long as the production technology of a firm is linear in the number of workers and bargaining takes place collectively between the firm and its labor force, the model displays the same properties.

Financial contract and borrowing limit: We assume that lending is done by competitive intermediaries who pool a large number of loans. We refer to these intermediaries as *lenders*. The amount of borrowing is constrained by limited enforcement. After the payments of dividends and wages, and after contracting the new debt, the firm observes whether the match is separated. It is at this point that the firm chooses whether to default. In the event of default the lender will be able to recover only a fraction χ_t of the firm's value.

Denote by $J_t(b_t)$ the equity value of the firm at the beginning of the period, which is equal to the discounted expected value of dividends for shareholders. This function depends on the individual stock of debt b_t . Obviously, higher is the debt and lower is the equity value. The latter also depends on the aggregate states $\mathbf{s}_t = (z_t, \phi_t, B_t, N_t)$, where z_t and ϕ_t are exogenous aggregate states (shocks), B_t is the aggregate stock of debt and $N_t = 1 - u_t$ is employment. We distinguish aggregate debt from individual debt since, to derive the equilibrium, we have to allow for individual deviations. We use the time subscript t to capture the dependence of the value function from the aggregate states, that is, we write $J_t(b_t)$ instead of $J(z_t, \phi_t, B_t, N_t; b_t)$. We will use this convention throughout the paper.

We begin by considering the possibility of default when the match is separated. In this case the value of the firm is zero. The lender anticipates

that the recovery value is zero in the event of separation and the debt will not be repaid. Therefore, in order to break-even, the lender imposes a borrowing limit insuring that the firm does not default when the match is not separated and charges an interest rate premium to cover the losses realized when the match is separated.

If the match is not separated, the value of the firm's equity is $\beta\mathbb{E}_t J_{t+1}(b_{t+1})$, that is, the next period expected value of equity discounted to the current period. Adding the present value of debt, $b_{t+1}/(1+r)$, we obtain the total value of the firm. If the firm defaults, the lender recovers only a fraction χ_t of the total value of the firm. Therefore, the lender is willing to lend as long as the following constraint is satisfied:

$$\chi_t \left[\frac{b_{t+1}}{1+r} + \beta\mathbb{E}_t J_{t+1}(b_{t+1}) \right] \geq \frac{b_{t+1}}{1+r}.$$

The variable χ_t is stochastic and affects the borrowing capacity of the firm. Henceforth, we will refer to unexpected changes in χ_t as 'credit shocks'. Thus, our interpretation of credit shocks is the one of exogenous variations in the firm's ability to borrow which are *orthogonal* to the value of the firm.

By collecting the term $b_{t+1}/(1+r)$ and using the fact that $\beta(1+r) = 1$, we can rewrite the enforcement constraint more compactly as

$$\phi_t \mathbb{E}_t J_{t+1}(b_{t+1}) \geq b_{t+1}, \tag{1}$$

where $\phi_t \equiv \chi_t/(1-\chi_t)$. We can then think of credit shocks as unexpected innovations to the variable ϕ_t . This is the exogenous state variable included in the set of aggregate states \mathbf{s}_t .

We now have all the elements to determine the actual interest rate that lenders charge to firms. Since the loan is made before knowing whether the match is separated, the interest rate charged by the lender takes into account that the repayment arises only with probability $1-\lambda$. Assuming that financial markets are competitive, the zero-profit condition requires that the gross interest rate R satisfies

$$R(1-\lambda) = 1+r. \tag{2}$$

The left-hand side of (2) is the lender's expected income per unit of debt. The right-hand side is the lender's opportunity cost of funds (per unit of debt). Therefore, the firm receives b_{t+1}/R at time t and, if the match is not separated, it repays b_{t+1} at time $t+1$. Because of risk neutrality, the interest rate is always constant, and therefore, r and R bear no time subscript.

Firm's value: Central to the characterization of the properties of the model is the wage determination process which is based on bargaining. Before describing the bargaining problem, we define the value of the firm recursively taking as given the wage bargaining outcome. This is denoted by $w_t = g_t(b_t)$. The recursive structure of the problem implies that the wage is fully determined by the states at the beginning of the period.

The equity value of the firm can be written recursively as

$$J_t(b_t) = \max_{b_{t+1}} \left\{ z_t - g_t(b_t) - b_t + \frac{b_{t+1}}{R} + \beta(1 - \lambda)\mathbb{E}_t J_{t+1}(b_{t+1}) \right\} \quad (3)$$

subject to

$$\phi_t \mathbb{E}_t J_{t+1}(b_{t+1}) \geq b_{t+1}.$$

Notice that the only choice variable in this problem is the debt b_{t+1} . Also notice that the firm takes the current wage as given but it fully internalizes that the choice of debt b_{t+1} affects future wages. This is captured by the dependence of the next period value $J_{t+1}(b_{t+1})$ on b_{t+1} .

Because of the additive structure of the objective function, the optimal choice of b_{t+1} does not depend neither on the current wage $w_t = g_t(b_t)$ nor on the current liabilities b_t .

Lemma 1 *The new debt b_{t+1} chosen by the firm is independent of b_t and $w_t = g_t(b_t)$.*

Proof 1 *Since w_t and b_t enter the objective function additively and they do not affect neither the next period value of the firm's equity nor the enforcement constraint, the choice of b_{t+1} is independent of w_t and b_t .*

As we will see, this property greatly simplifies the wage bargaining problem we will describe below.

Worker's values: In order to set up the bargaining problem, we define the worker's values ignoring the capital incomes earned from the ownership of bonds and firms (interests and dividends). Since agents are risk neutral and

the change in the dividend of an individual firm is negligible for an individual worker, we can ignore these incomes in the derivation of wages.

When employed, the worker's value is

$$W_t(b_t) = g_t(b_t) + \beta \mathbb{E}_t \left[(1 - \lambda)W_{t+1}(b_{t+1}) + \lambda U_{t+1} \right], \quad (4)$$

which is defined once we know the wage function $w_t = g_t(b_t)$. The function U_{t+1} is the value of being unemployed and is defined recursively as

$$U_t = a + \beta \mathbb{E}_t \left[p_t W_{t+1}(B_{t+1}) + (1 - p_t)U_{t+1} \right],$$

where p_t is the probability that an unemployed worker finds a job and a is the flow utility for an unemployed worker.

While the value of an employed worker depends on the aggregate states and the individual debt b_t , the value of being unemployed depends only on the aggregate states since all firms choose the same level of debt in equilibrium. Thus, if an unemployed worker finds a job in the next period, the value of being employed is $W_{t+1}(B_{t+1})$.

Bargaining problem: Let's first define the following functions

$$\hat{J}_t(b_t, w_t) = \max_{b_{t+1}} \left\{ z_t - w_t - b_t + \frac{b_{t+1}}{R} + \beta(1 - \lambda)\mathbb{E}_t J_{t+1}(b_{t+1}) \right\} \quad (5)$$

$$\widehat{W}_t(b_t, w_t) = w_t + \beta \mathbb{E}_t \left[(1 - \lambda)W_{t+1}(b_{t+1}) + \lambda U_{t+1} \right]. \quad (6)$$

These are the values of a firm and an employed worker, respectively, given an arbitrary wage w_t paid in the current period and future wages determined by the function $g_{t+1}(b_{t+1})$. The functions $J_t(b_t)$ and $W_t(b_t)$ were defined in (3) and (4) for a particular wage equation $g_t(b_t)$.

Given the *relative* bargaining power of workers $\eta \in (0, 1)$, the current wage is the solution to the problem

$$\max_{w_t} \hat{J}_t(b_t, w_t)^{1-\eta} \left[\widehat{W}_t(b_t, w_t) - U_t \right]^\eta. \quad (7)$$

This problem maximizes the weighted product of the net values for the firm and the worker. The net value for the firm is the equity value $\hat{J}_t(b_t, w_t)$

since in the event of disagreement the firm would default on the debt (the threat value is zero). The net value for the worker is the value of being employed, $\widehat{W}_t(b_t, w_t)$, minus the value of quitting, U_t .

Let $w_t = \psi_t(g; b_t)$ be the solution, which makes explicit the dependence on the function g determining future wages. The solution to the bargaining problem is the fixed-point to the functional equation $g_t(b_t) = \psi_t(g; b_t)$.

We can now see the importance of Lemma 1. Since the optimal debt chosen by the firm after the wage bargaining does not depend on the wage, in solving the optimization problem (7) we do not have to consider how the choice of w_t affects b_{t+1} . Therefore, we can derive the first order condition taking b_{t+1} as given. After some re-arrangement this can be written as

$$J_t(b_t) = (1 - \eta)S_t(b_t), \quad (8)$$

$$W_t(b_t) - U_t = \eta S_t(b_t), \quad (9)$$

where $S_t(b_t) = J_t(b_t) + W_t(b_t) - U_t$ is the bargaining surplus. As it is typical in search models with Nash bargaining, the surplus is split between the contractual parties proportionally to their relative bargaining power.

Choice of debt: Let's first rewrite the bargaining surplus as

$$S_t(b_t) = z_t - a - b_t + \frac{b_{t+1}}{R} + (1 - \lambda)\beta\mathbb{E}_t S_{t+1}(b_{t+1}) - \eta\beta p_t \mathbb{E}_t S_{t+1}(B_{t+1}). \quad (10)$$

Notice that the next period surplus enters twice but with different state variables. In the first term the state variable is the individual debt b_{t+1} while in the second is the aggregate debt B_{t+1} . The reason is because the value of being unemployed today depends on the value of being employed in the next period in a firm with the aggregate value of debt B_{t+1} . Instead, the value of being employed today also depends on the value of being employed next period in the same firm. Since the current employer is allowed to choose a level of debt that differs from the debt chosen by other firms, the individual state next period, b_{t+1} , could be different from B_{t+1} . In equilibrium, of course, $b_{t+1} = B_{t+1}$. However, to derive the optimal policy we have to allow the firm to deviate from the aggregate policy.

Because the choice of b_{t+1} does not depend on the existing debt b_t (see Lemma 1), we have

$$\frac{\partial S_t(b_t)}{\partial b_t} = -1. \quad (11)$$

Before using this property, we rewrite the firm's problem (3) as

$$J_t = \max_{b_{t+1}} \left\{ z_t - g_t(b_t) - b_t + \frac{b_{t+1}}{R} + \beta(1 - \lambda)(1 - \eta)\mathbb{E}_t S_{t+1}(b_{t+1}) \right\} \quad (12)$$

subject to

$$(1 - \eta)\phi_t \mathbb{E}_t S_{t+1}(b_{t+1}) \geq b_{t+1},$$

where we used $W_{t+1}(b_{t+1}) - U_{t+1} = \eta S_{t+1}(b_{t+1})$ from (8) and the surplus is defined in (10).

Denoting by μ_t the Lagrange multiplier associated with the enforcement constraint, the first order condition is

$$\eta - \left[1 + (1 - \eta)\phi_t \right] \mu_t = 0. \quad (13)$$

In deriving this expression we used (11) and $\beta R(1 - \lambda) = \beta(1 + r) = 1$. We can then establish the following result.

Lemma 2 *The enforcement constraint is binding ($\mu_t > 0$) if $\eta \in (0, 1)$.*

Proof 2 *It follows directly from the first order condition (13).*

A key implication of Lemma 2 is that, provided that workers have some bargaining power, the firm always chooses to maximum debt and the borrowing limit binds. Thus, bargaining introduces a mechanism through which the original Modigliani and Miller (1958) result does not apply.

To gather some intuition about the economic interpretation of the multiplier μ_t , it will be convenient to re-arrange the first order condition as

$$\mu_t = \underbrace{\left(\frac{1}{1 + (1 - \eta)\phi_t} \right)}_{\text{Total change in debt}} \times \underbrace{\left(\frac{1}{R} - \frac{1 - \eta}{R} \right)}_{\text{Marginal gain from borrowing}}.$$

The multiplier results from the product of two terms. The first term is the change in next period liabilities b_{t+1} allowed by a marginal relaxation of the enforcement constraint, that is, $b_{t+1} = \phi_t(1 - \eta)\mathbb{E}_t S(z_{t+1}, B_{t+1}, b_{t+1}) + \bar{a}$,

where $\bar{a} = 0$ is a constant. This is obtained by marginally changing \bar{a} . In fact, using the implicit function theorem, we obtain $\frac{\partial b_{t+1}}{\partial \bar{a}} = \frac{1}{1+(1-\eta)\phi_t}$, which is the first term.

The second term is the net gain, actualized, from increasing the next period liabilities b_{t+1} by one unit (marginal change). If the firm increases b_{t+1} by one unit, it receives $1/R$ units of consumption today, which is paid as dividends. This unit has to be repaid next period. However, the effective cost for the firm is lower than 1 since the higher debt allows the firm to reduce the next period wage by η , that is, the part of the surplus going to the worker. Thus, the effective repayment incurred by the firm is $1 - \eta$. This cost is discounted by $R = (1 + r)/(1 - \lambda)$ because the debt is repaid only if the match is not separated, which happens with probability $1 - \lambda$. Therefore, the multiplier μ_t is equal to the total change in debt (first term) multiplied by the gain from a marginal increase in borrowing (second term).

2.1 Firm entry and general equilibrium

So far we have defined the problem solved by incumbent firms. We now consider more explicitly the problem solved by new firms. In this setup new firms are created when a posted vacancy is filled by a searching worker. Because of the matching frictions, a posted vacancy will be filled only with probability $q_t = m(v_t, u_t)/v_t$. Since posting a vacancy requires a fixed cost κ , vacancies will be posted only if the value is not smaller than the cost.

We start with the definition of the value of a filled vacancy. When a vacancy is filled, the newly created firm starts producing and pays wages in the next period. The only decision made in the current period is the debt b_{t+1} . The funds raised by borrowing are distributed to shareholders. Therefore, the value of a vacancy filled with a worker is

$$Q_t = \max_{b_{t+1}} \left\{ \frac{b_{t+1}}{1+r} + \beta(1-\eta)\mathbb{E}_t S_{t+1}(b_{t+1}) \right\} \quad (14)$$

subject to

$$\phi_t(1-\eta)\mathbb{E}_t S_{t+1}(b_{t+1}) \geq b_{t+1}.$$

Since the new firm becomes an incumbent starting in the next period, $S_{t+1}(b_{t+1})$ is the surplus of an incumbent firm defined in (10).

As far as the choice of b_{t+1} is concerned, a new firm faces a similar problem as incumbent firms (see problem (12)). Even if the new firm has no initial debt and it does not pay wages, it will choose the same stock of debt b_{t+1} as incumbent firms. This is because the new firm faces the same enforcement constraint and the choice of b_{t+1} is not affected by b_t and w_t as established in Lemma 1. This allows us to work with a ‘representative’ firm.

We are now ready to define the value of posting a vacancy. This is equal to $V_t = q_t Q_t - \kappa$. As long as the value of a vacancy is positive, more vacancies will be posted. Free entry implies that $V_t = 0$ in equilibrium. Therefore,

$$q_t Q_t = \kappa. \quad (15)$$

In a general equilibrium all firms choose the same level of debt and $b_t = B_t$. Furthermore, assuming that the bargaining power of workers is positive, firms always borrow up to the limit, that is, $B_{t+1} = \phi_t(1 - \eta)\mathbb{E}_t S_{t+1}(B_{t+1})$. Using the free entry condition (15), Appendix A derives the wage equation

$$w_t = (1 - \eta)a + \eta(z_t - b_t) + \frac{\eta[p_t + (1 - \lambda)\phi_t]\kappa}{q_t(1 + \phi_t)}. \quad (16)$$

The wage equation makes clear that the initial debt b_t acts like a reduction in output in the determination of wages. Instead of getting a fraction η of the output, the worker gets a fraction η of the output ‘net’ of debt. Thus, for a given bargaining power η , the larger is the debt and the lower is the wage received by the worker.

3 Response to shocks

The goal of this section is to show how employment responds to shocks (credit and productivity). We first provide some analytical intuition and then we simulate the model numerically.

3.1 Analytical intuition

The key equation that defines job creation is the free entry condition $q_t Q_t = \kappa$. Once we understand how the value of a filled vacancy Q_t is affected by shocks, we can then infer the impact of the shocks on job creation. More specifically, if the value of a filled vacancy Q_t increases, the probability of filling a vacancy $q_t = m(v_t, u_t)/v_t$ must decline. Since the number of searching

workers u_t is given in the current period, the decline in q_t must derive from an increase in the number of posted vacancies. Thus, more jobs are created.

Because of the general equilibrium effects of a shock, it is not possible to derive closed form solutions for the impulse responses. However, we can derive analytical results if we assume that the shock affects only a single (atomistic) firm. In this way we can abstract from general equilibrium effects and provide simple analytical intuitions. This is the approach we take in this section. The full general equilibrium responses will be shown numerically in the next subsection.

Credit shocks: Starting from a steady state equilibrium, suppose that there is one firm with a newly filled vacancy for which the value of ϕ_t increases. The increase is purely temporary and it reverts back to the steady state value starting in the next period. We stress that the change involves only one firm so that we can ignore the general equilibrium effects.

The derivative of Q_t with respect to ϕ_t is

$$\frac{\partial Q_t}{\partial \phi_t} = \left[\frac{1}{1+r} + \beta(1-\eta) \frac{\partial \mathbb{E}_t S_{t+1}(b_{t+1})}{\partial b_{t+1}} \right] \frac{\partial b_{t+1}}{\partial \phi_t}.$$

Applying the implicit function theorem to the enforcement constraint holding with equality, that is, $b_{t+1} = \phi_t(1-\eta)ES_{t+1}(b_{t+1})$, we can rewrite the derivative as

$$\frac{\partial b_{t+1}}{\partial \phi_t} = \frac{(1-\eta)\mathbb{E}_t S_{t+1}(b_{t+1})}{1 - (1-\eta)\phi_t \mathbb{E}_t \frac{\partial S_{t+1}(b_{t+1})}{\partial b_{t+1}}}.$$

Substituting $\partial \mathbb{E}_t S_{t+1}(b_{t+1})/\partial b_{t+1} = -1$ (see equation (11)) we obtain

$$\frac{\partial Q_t}{\partial \phi_t} = \frac{\eta(1-\eta)\beta \mathbb{E}_t S_{t+1}(b_{t+1})}{1 + (1-\eta)\phi_t}, \quad (17)$$

where we have used $\beta = 1/(1+r)$.

From this equation we can see that an increase in ϕ_t raises the value of a newly filled vacancy Q_t , provided that the worker has some bargaining power, that is, $\eta > 0$. The intuition is straightforward. If the new firm can increase its debt in the current period, it pays more dividends now and less dividends in the future. However, the reduction in future dividends needed to repay the debt is smaller than the increase in the current dividends because the

higher debt allows the firm to reduce the next period wages. Effectively, part of the debt will be repaid by the worker, increasing the firm's value today.

In deriving this result we assumed that the change in ϕ_t was only for one firm so that we could ignore the general equilibrium effects. However, since ϕ_t is an aggregate variable, the change increases the value of a vacancy for all firms and more vacancies will be posted. The higher job creation will have some general equilibrium effects that cannot be characterized analytically. The full general equilibrium response will be shown numerically.

Productivity shocks: Although the main focus of the paper is on credit shocks, it will be helpful to investigate how the ability to borrow affects the propagation of productivity shocks since this has been the main focus of a large body of literature.⁶

In general, productivity shocks generate an employment expansion because the value of a filled vacancy increases. This would arise even if the level of debt is constant, which is the case in the standard matching model. In the case in which the constant debt is zero we revert exactly to the standard matching model. However, if the debt is not constrained to be constant but changes endogenously, then the impact of productivity shocks on employment could be amplified.

As for the case of credit shocks, we consider a productivity shock that affects only one newly created firm and abstract from general equilibrium effects. We further assume that the productivity shock is persistent. The persistence implies that the new firm will be more productive in the next period when it starts producing. If the increase in z_t is purely temporary, the change will not have any effect on the value of a new match.

The derivative of Q_t with respect to z_t is

$$\frac{\partial Q_t}{\partial z_t} = \beta(1 - \eta) \frac{\partial \mathbb{E}_t S_{t+1}(b_{t+1})}{\partial z_t} + \left[\frac{1}{1 + r} + \beta(1 - \eta) \frac{\partial \mathbb{E}_t S_{t+1}(b_{t+1})}{\partial b_{t+1}} \right] \frac{\partial b_{t+1}}{\partial z_t}.$$

Applying the implicit function theorem to the enforcement constraint $b_{t+1} = (1 - \eta)\phi_t \mathbb{E}_t S_{t+1}(b_{t+1})$, we obtain

$$\frac{\partial b_{t+1}}{\partial z_t} = \frac{(1 - \eta)\phi_t \mathbb{E}_t \frac{\partial S_{t+1}(b_{t+1})}{\partial z_t}}{1 - (1 - \eta)\phi_t \mathbb{E}_t \frac{\partial S_{t+1}(b_{t+1})}{\partial b_{t+1}}}.$$

⁶See, for instance, Shimer (2005) and related contributions.

Since $\partial \mathbb{E}_t S_{t+1}(b_{t+1})/\partial b_{t+1} = -1$ (see equation (11)), substituting in the derivative of the firm's value Q_t and using $\beta = 1/(1+r)$ we obtain

$$\frac{\partial Q_t}{\partial z_t} = \beta(1-\eta) \frac{\partial \mathbb{E}_t S_{t+1}(b_{t+1})}{\partial z_t} + \eta \left(\frac{(1-\eta)\phi_t \beta \frac{\partial \mathbb{E}_t S_{t+1}(b_{t+1})}{\partial z_t}}{1 + (1-\eta)\phi_t} \right). \quad (18)$$

We now compare this expression to the equivalent expression we would obtain if the borrowing constraint was exogenous. More specifically, we replace the enforcement constraint (1) with the borrowing limit $b_{t+1} \leq \bar{b}$ where \bar{b} is constant. Under this constraint we have that $\partial b_{t+1}/\partial z_t = 0$. Therefore,

$$\frac{\partial Q_t}{\partial z_t} = \beta(1-\eta) \frac{\partial \mathbb{E}_t S_{t+1}(b_{t+1})}{\partial z_t}. \quad (19)$$

Comparing (18) to (19) we can see that, when the borrowing limit is endogenous, there is an extra term in the derivative of Q_t with respect to z_t . This term is positive if $\eta > 0$. Therefore, the change in the value of a filled vacancy in response to a productivity improvement is bigger when the borrowing limit is endogenous. Intuitively, the increase in productivity raises the value of the firm. This allows for more debt which in turn increases the value of a filled vacancy Q_t .

Of course, this does not tell us whether the amplification effect is large or small. However, we can derive some intuition of what is required for the amplification effect to be large. In particular, as we can see from equation (18), we need that the value of a match is highly sensitive to the productivity shock, that is, we need $\frac{\partial \mathbb{E}_t S_{t+1}(b_{t+1})}{\partial z_t}$ to be large. This essentially requires large asset price responses to productivity shocks. In this sense the model shares the same features of the models proposed by Bernanke and Gertler (1989) and Kiyotaki and Moore (1997) where the amplification of productivity shocks depends on the response of asset prices.

3.2 Numerical simulation

We now show the responses to shocks in the general equilibrium through numerical simulation. Since the goal of the numerical simulation presented in this section is only to illustrate the qualitative properties of the model, we avoid a lengthy discussion of the parameter values which are reported in Table 1. A full quantitative analysis will be conducted in Section 5. As we will see, the parameters used here are those estimated in Section 5.

Table 1: List of parameters

<i>Description</i>	<i>Value</i>
Discount factor for entrepreneurs, β	0.990
Matching parameter, $\bar{\xi}$	0.773
Matching parameter, α	0.649
Relative bargaining power, η	0.672
Probability of separation, λ	0.049
Cost of posting vacancy, κ	0.711
Utility flow unemployed, a	0.468
Enforcement parameter, $\bar{\phi}$	3.637

Responses to credit shocks: Figure 3 plots the responses of debt, employment, output and wages to a negative credit shock. The credit variable ϕ_t is assumed to follow a first order autoregressive process with parameters $\rho_\phi = 0.965$ and $\sigma_\phi = 0.143$. Since the model is solved by linearizing the dynamic system around the steady state, the responses to a positive shock will have the same shape but with inverted sign.

The response of employment is quite persistent, reflecting the persistence of the shock. The mechanism that generates these dynamics should be clear by now. Since firms are forced to cut their debt, workers are able to negotiate higher future wages starting from the next period. The response of wages is plotted in last panel of Figure 3. At impact the wage falls below the steady state but then, starting from the next period, it raises above the steady state. Since new firms start paying wages in the next period, what matters for job creation is the response starting in period 1, that is, one period after the shock. Thus, the anticipated cost of labor for new matches increases in response to a negative credit shock and this discourages job creation.

The initial drop in the wage of incumbent workers can be explained as follow. Besides the changes induced by general equilibrium effects, the new debt does not affect the net surplus of existing matches since the debt will be repaid in an exactly offsetting way: $b' - \beta R(1 - \lambda)b'$. But future wages will change, implying that current wages need to change to keep their present value (the surplus going to workers) unchanged.

The credit shock does not affect the value received by ‘incumbent’ workers and firms (besides, again, the impact coming from general equilibrium

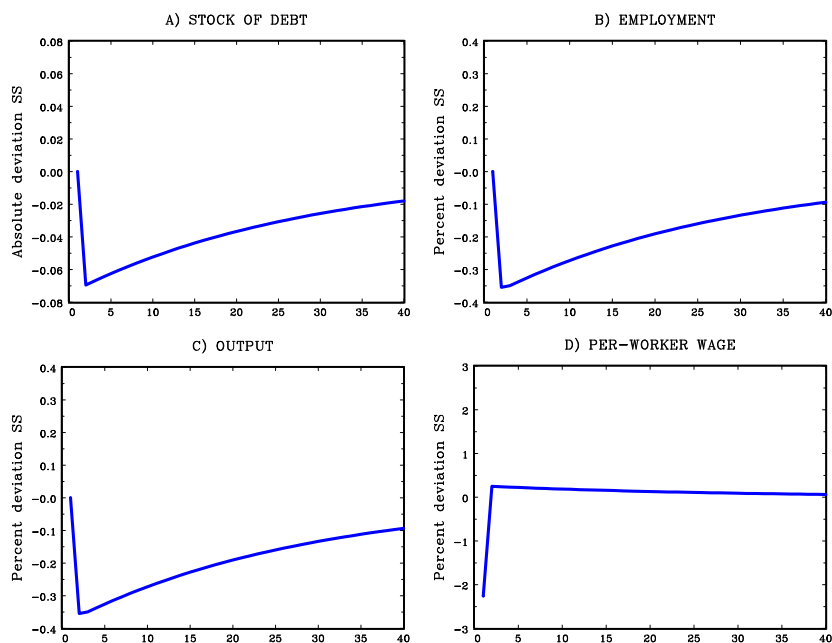


Figure 3: Impulse responses to a negative credit shock.

effects). So it may appear counterintuitive why an incumbent firm chooses to borrow up to the limit if, effectively, both the surplus and the division of the surplus do not change. This is due to the lack of commitment from the firm. Since the new debt is chosen unilaterally by the firm after bargaining the wage, the firm prefers higher debt to reduce future wages. This is anticipated by workers who demand higher wages today to compensate for the lower wages expected in the future. If the firm could credibly commit before bargaining the wage, it would agree not to raise the debt.⁷ We will return to the dynamics of wages in the next section where we consider possible extensions of the model.

⁷This mechanism has some similarities with the model studied by Barro and Gordon (1983): since workers anticipate that the central bank inflates ex-post, they demand higher nominal wages today. Differently from that model, however, there are not real costs from deviating, at least from the point of view of an individual firm. As long as new firms can choose the debt before bargaining with new workers, what happens after the firm becomes incumbent is irrelevant for the dynamics of employment.

Responses to productivity shocks: Figure 4 plots the impulse responses to a negative productivity shock. The variable z_t is assumed to follow a first order autoregressive process with parameters $\rho_z = 0.944$ and $\sigma_z = 0.005$. We also report the response when the debt limit is exogenously fixed to the steady state value. In this case we impose the borrowing constraint $b_{t+1} \leq \bar{\phi}\bar{J}$, where $\bar{\phi}$ and \bar{J} are the steady state values of the financial variable ϕ_t and of the firm's value $J_t(b_t)$.

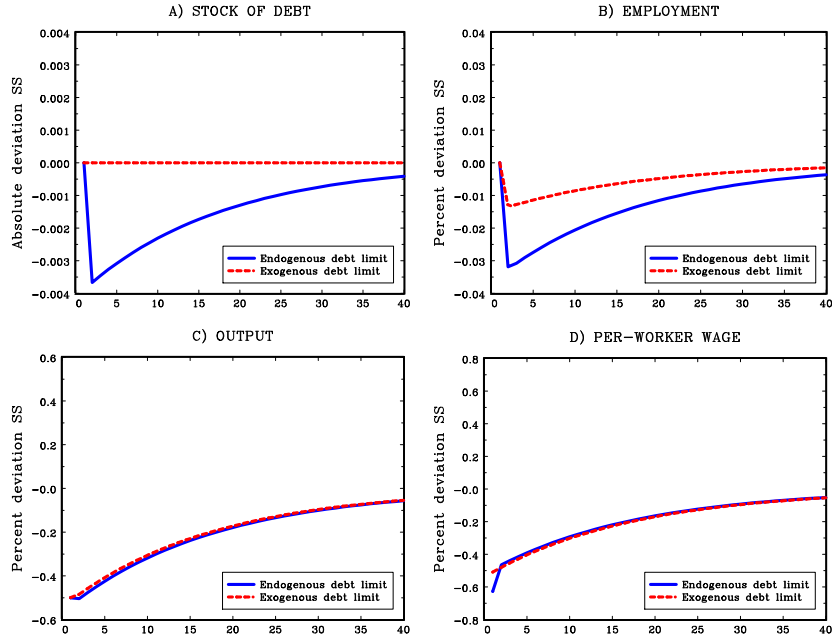


Figure 4: Impulse responses to a negative productivity shock.

Productivity shocks are amplified when the borrowing limit is endogenous. However, the magnitude of the employment response is still small. In general, the response of the economy to productivity shocks is similar to the standard matching model. This is not surprising since the version of our model with exogenous borrowing is the standard matching model.

4 Model extension

In this section we propose two extensions of the model that could improve the dynamics of wages. First we assume that each firm is a monopolistic

producer, that is, it produces a differentiated good used as an input in the production of final goods. The second assumption is that, after the initial wage bargaining for a new worker, wages are renegotiated infrequently. As we will see, the new features will have very minor implications for the dynamics of employment but will affect the dynamics of wages.

4.1 Monopolistic competition

In this section we assume that each firm/match is a monopolistic producer of a differentiated good. The differentiated goods produced by each firm, denoted by y_i , contribute to aggregate output according to $Y = (\int_0^N y_i^\varepsilon di)^\frac{1}{\varepsilon}$, where N is the total number of differentiated goods which is equal to employment. Furthermore, to make monopolistic competition relevant, we assume that there is also an intensive margin for the production of good/firm i . The production technology takes the form $y_i = zl_i$ where l_i is effort/hours supplied by the worker with dis-utility $Al_i^{1+\varphi}/(1+\varphi)$. The intensive margin gives us additional flexibility in separating employment from output.

A well known feature of models with monopolistic competition is that the demand for the differentiated good and the profits of each producer are increasing functions of aggregate production. In our model with equilibrium unemployment, aggregate production depends on how many matches are active which is also equal to the number of employed workers. Therefore, higher is the employment rate and higher is the demand for each intermediate good. Because of this, Appendix B shows that the revenues of an individual firm can be written in reduced form as

$$\pi_t = \tilde{z}_t N_t^\nu. \tag{20}$$

The variable \tilde{z}_t is a monotone transformation of productivity z_t and N_t is aggregate employment taken as given by an individual firm. We call this term net surplus flow instead of output for reasons that will become clear below. Therefore, the introduction of monopolistic competition only requires the replacement of firm level production z_t with the net surplus flows $\pi_t = \tilde{z}_t N_t^\nu$.

We can now easily describe how a credit shock affects wages. Thanks to the dependence of the surplus flow from aggregate employment, a positive credit shock has two effects on the wages paid to newly hired workers. On the one hand, taking as given aggregate employment, the higher leverage allows firms to pay lower wages, which increases the incentive to hire more workers. On the other hand, the increase in aggregate employment, N_t , raises

the surplus flow π_t which, through the bargaining of the surplus, increases wages. Therefore, whether a credit shock is associated with an increase or decrease in the wages paid to newly hired workers depends on the relative importance of these two effects.

Numerical simulation: There are only two new parameters, ε and φ . The first determines the price mark-up and the second the elasticity of effort or labor utilization. We set $\varepsilon = 0.75$ which implies a price mark-up of $1/\varepsilon - 1 = 0.33$. Then we choose the value of φ so that the elasticity of workers' effort is equal to 1, that is, $1/\varphi = 1$.

Figure 5 plots the impulse responses to a credit shock. We first notice that the responses of debt and employment are not very different from the baseline model. The dynamics of wages, however, is different. In particular, the wage falls on impact and, contrary to the baseline model, it does not raise above the steady state for several periods. What this means is that the wages of new hires are almost unaffected by the credit shock.

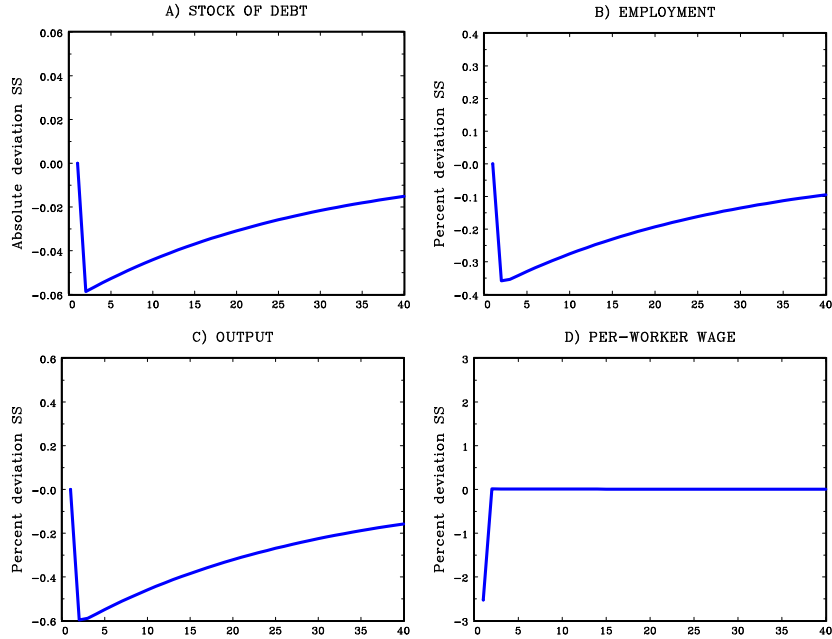


Figure 5: Impulse responses to a negative credit shock - Extended model with monopolistic competition and endogenous effort/hours.

4.2 Optimal labor contracts and infrequent negotiation

Although it is common in the searching and matching literature to assume that wages are renegotiated every period, there is not a theoretical or empirical justification for adopting this assumption. An alternative approach is to characterize the optimal contract first and then design possible mechanisms for implementing the optimal contract.

Suppose that, when the worker is first hired, the parties bargain an optimal long-term contract. The optimal contract chooses the sequence of wages paid to the worker at any point in time, contingent on all possible contingencies directly related to the firm. The state-contingent sequence of wages maximizes the total surplus which is shared according to the relative bargaining weight η . The sequence of wages must satisfy the participation constraints for the firm and the worker. What this means is that, at any point in time, the value of the firm cannot be negative and the value for the worker cannot be smaller than the value of being unemployed.

It turns out that the sequence of wages that characterizes the optimal contract is not unique. The multiplicity has a simple intuition. Since production does not depend on wages, the choice of a different sequence does not affect the surplus of the match. For example, the firm could pay slightly lower wages at the beginning and slightly higher wages in later periods. This is also an optimal contract as long as the initial worker's value is the same and the participation constraints are not violated. The second condition is typically satisfied if η is not too close to 0 or 1 and shocks are bounded. The assumption of risk neutrality plays a crucial role for this result. With concave utility of at least one of the parties, like in Michelacci and Quadrini (2009), the optimal sequence of wages would be unique.

Given the multiplicity, we have different ways of implementing the optimal contract. One possibility is to choose a sequence of wages that is equal to the sequence obtained when the wage is re-bargained with some probability ψ . As long as this sequence does not violate the participation constraints, it also implements the optimal contract. Another way of thinking is that, when the firm and the worker meet, they decide not only the division of the surplus (through bargaining) but also the frequency with which they renegotiate the contract. Since the parties are indifferent, we could choose a frequency that may appear more relevant empirically. Although the choice of a particular frequency is arbitrary from a theoretical point of view, it cannot be dismissed on the ground that it is suboptimal.

Appendix C derives the key equations under the assumption that wage contracts are renegotiated by each firm with probability ψ and wages stay constant until they are renegotiated. The net surplus generated by a match $S_t(b_t)$ is still given by (10) while the net value of an employed worker when the contract is renegotiated is

$$W_t(b_t) - U_t = \frac{w_t - a}{1 - \beta(1 - \lambda)(1 - \psi)} + \Omega_t(b_t), \quad (21)$$

with the function $\Omega_t(b_t)$ defined recursively as

$$\Omega_t(b_t) = \eta\beta[(1 - \lambda)\psi - p_t]\mathbb{E}_t S_{t+1}(b_{t+1}) + \beta(1 - \lambda)(1 - \psi)\mathbb{E}_t \Omega_{t+1}(b_{t+1}). \quad (22)$$

See Appendix C for the detailed derivation.

We can see from equation (21) that the worker's value has two components. The first component derives from contingencies when the contract is not renegotiated. The second component derives from contingencies when the contract is renegotiated.

Numerical simulation: There is only one additional parameter to be calibrated, ψ , which we set to 0.25. If we think of a period as a quarter, this implies that wages are renegotiated, on average, every year. This extension does not affect the other parameters which we set to the same values used in the previous subsection for the model with monopolistic competition.

Figure 6 plots the impulse responses to a credit shock generated by the model with monopolistic competition and infrequent negotiation. The responses of debt and employment are not very different from the baseline model. Average wages, however, fall below the steady state for few quarters (thanks to monopolistic competition) and their volatility is significantly smaller (thanks to infrequent negotiation). Therefore, the consideration of monopolistic competition and infrequent bargaining could allow the model to generate more plausible dynamics of wages.⁸

⁸Gertler and Trigari (2009) assume infrequent negotiation not only for existing matches but also for new matches. If in our model we allow for infrequent negotiations also for new matches, the macroeconomic responses to credit shocks would be qualitative similar but quantitatively smaller. However, as long as credit shocks are highly persistent, as suggested by the data, the quantitative differences will not be large.

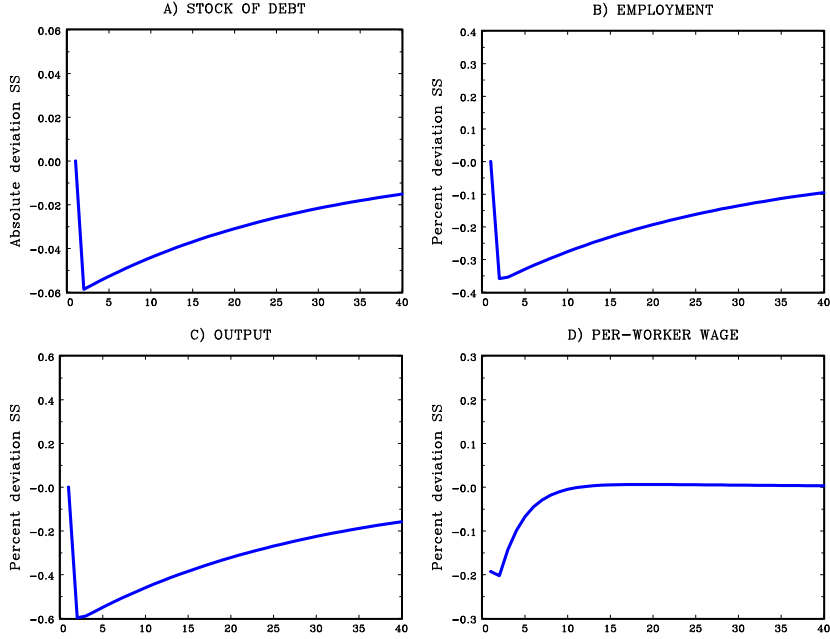


Figure 6: Impulse responses to a negative credit shock - Extended model with monopolistic competition and infrequent negotiation.

5 Structural estimation

The analysis conducted so far has illustrated the dynamic responses of the model to credit shocks numerically. The goal was primarily to show the qualitative properties of the model. In this and the next sections we try to bring the *extended* model (i.e., the one including monopolistic competition and infrequent bargaining) to the data more systematically using two approaches. In this section we conduct a structural estimation using Bayesian methods and in the next section we estimate a three-dimensional VAR whose identifying restrictions are derived from the structural model.

Before proceeding with the structural estimation we add a third shock to the model. In particular, we consider a shock to the efficiency of the matching function $m_t = \xi v_t^\alpha u_t^{1-\alpha}$. The variables m_t , v_t , u_t are, respectively, the new matches, the posted vacancies and the unemployed workers. In the previous analysis ξ was a normalizing constant. Now we assume that it follows the first order autoregressive process $\ln \xi_t = \bar{\xi} + \rho_\xi \ln \xi_{t-1} + \epsilon_{\xi,t}$.

It is important to clarify that we do not have a particular interest in

understanding the impact of this shock. Rather we interpret ξ_t as capturing the potential impact of other shocks that are not explicitly modeled. In this way we do not force the model to replicate the empirical series only with productivity and credit shocks. As we show in Appendix D, innovations to ξ_t may also capture the impact of shocks that are transmitted through the standard credit channel as in Petrosky-Nadeau (2009).

5.1 Estimation with three shocks and three variables

With the matching shock we have three exogenous states: productivity, z_t , credit, ϕ_t , and matching efficiency, ξ_t . They all follow independent autoregressive processes characterized by the parameters ρ_j and σ_j , $j \in \{z, \phi, \xi\}$. Since we have three shocks, we use three empirical series: (i) real log-GDP; (ii) log-employment in the non-farm sector; (iii) net issuance of debt in the business sector divided by business GDP. The estimation is performed using first differences over the sample period 1984.I-2011.II. Later we will repeat the estimation with additional shocks and empirical variables.

Five of the model parameters are pre-set. They are the discount factor β , the frequency of negotiation ψ , the probability of separation λ , the average efficiency of the matching function $\bar{\xi}$ and the cost of posting a vacancy κ . The discount factor is set to the standard quarterly value of $\beta = 0.99$ and the frequency of negotiation to $1/\psi = 4$ (annually on average). The reason these two parameters are pre-set is because they do not affect the properties of the three variables included in the estimation set. The remaining three parameters are pinned down using the following steady state targets: (i) 5 percent unemployment rate; (ii) 70 percent probability of filling a vacancy; (iii) 93 percent probability of finding a job for an unemployed worker. Only one of the three targets—the steady state unemployment rate—has some relevance of the properties of the variables used in the estimation. However, since this number is standard in the literature, we pre-set it in advance.

All remaining parameters are estimated with Bayesian methods. Table 2 reports the prior distributions, the mode and the thresholds for the bottom and top percentiles of the posterior distributions.

The prior distributions are chosen based on the following considerations. Direct estimates of the matching parameter α range from 0.3 to 0.7 (see Petrongolo and Pissarides (2001)). Thus, we assume that the mean of the prior distribution is the intermediate value of 0.5 with a sizable standard deviation of 0.1. For the bargaining parameter η there is no direct evidence

Table 2: Bayesian estimation with three variables.

<i>Estimated parameter</i>	<i>Prior[mean,std]</i>	<i>Mode</i>	<i>Posterior thresholds</i>	
			<i>Below 5%</i>	<i>Below 95%</i>
Productivity shock persistence, ρ_z	Beta[0.5,0.20]	0.944	0.937	0.968
Productivity shock volatility, σ_z	IGamma[0.001,0.05]	0.005	0.004	0.006
Credit shock persistence, ρ_ϕ	Beta[0.5,0.20]	0.965	0.954	0.970
Credit shock volatility, σ_ϕ	IGamma[0.001,0.05]	0.143	0.135	0.155
Matching shock persistence, ρ_ξ	Beta[0.5,0.20]	0.983	0.977	0.987
Matching shock volatility, σ_ξ	IGamma[0.001,0.05]	0.056	0.052	0.062
Matching share parameter, α	Beta[0.5,0.1]	0.650	0.638	0.656
Bargaining power workers, η	Beta[0.5,0.1]	0.674	0.676	0.696
Utility flow unemployed, a	Beta[0.4,0.1]	0.470	0.433	0.463
Mean enforcement parameter, $\bar{\phi}$	IGamma[8,5]	3.621	3.607	3.654
Mark-up parameter, ε	Beta[0.8,0.05]	0.937	0.932	0.954
Elasticity of effort, φ	Beta[1,0.2]	1.033	1.002	1.035

and it is common to use a value of 0.5. This justifies our choice of a mean value of 0.5 and a sizable standard deviation of 0.1. A similar approach is used for the utility flow from unemployment. Since there is no agreement on the right value of a , we use a mean value of 0.4 and a sizable standard deviation of 0.1. When evaluated at the mean value of all other parameters, $a = 0.4$ implies that the period utility from being unemployed is 50 percent the period utility from being employed.

The parameter $\bar{\phi}$ determines the ratio of debt over output. The value of 8 implies a debt-to-output ratio of 1 when evaluated at the mean values of all other parameters. At the same time, however, we allow for a large standard deviation of 5. The mean value of ε is set to 0.8, implying a mark-up of $1/\varepsilon = 0.25$, and the mean value of φ is set to 1, implying a unitary elasticity of hours. Finally, for the parameters of the shock processes, we assign the same values to each of the three shocks. The means, however, impose only minor restrictions since they are associated with wide standard deviations.

As can be seen from Table 2, the estimated parameters fall into plausible ranges. For example, the mode values for the matching and bargaining parameters are $\alpha = 0.65$ and $\eta = 0.674$. The market power parameter is $\varepsilon = 0.937$ implying a price mark-up of 6.5 percent. The elasticity of effort/hours is close to unitary. The mean of the enforcement parameter is $\bar{\phi} = 3.621$ and the average debt-to-output ratio is 0.5. The unemployment flow of utility is $a = 0.47$ and the period utility from being unemployed is

about 50 percent the utility flow from being employed.

The variance decomposition of several variables of interest are reported in Table 3. Credit shocks contribute significantly to the volatility of employment. The contribution of productivity shocks is quite limited, which is not surprising in light of the result of Shimer (2005). If we impose a higher flow utility from unemployment along the lines of Hagedorn and Manovskii (2008) or allow for infrequent negotiation as in Gertler and Trigari (2009), productivity could contribute more to employment fluctuations. However, productivity shocks are important determinants of output fluctuations. This happens directly through the change in the productivity of each worker and through the change in effort/hours induced by the productivity improvement. Finally, shocks to the matching efficiency are important contributors to the variance of employment. As stressed above, however, we should not assign a specific structural meaning to the contribution of the matching shocks. They should be interpreted as capturing the impact of many other shocks that have not been explicitly modeled in the paper. Some of these shocks are those transmitted through a standard credit channel (see Appendix D).

Table 3: Variance decomposition. Estimation with three variables.

	<i>TFP shock</i> z	<i>Credit shock</i> ϕ	<i>Matching shock</i> ξ
Output	46.2	29.2	24.6
Employment	0.4	54.1	45.5
New debt/output	0.1	66.7	33.1
Hourly wage	12.0	57.0	31.0

Figure 7 plots the time series contribution of productivity and credit shocks to the empirical series of employment growth. The difference between the actual data and the sum of the contributions of productivity and credit shocks is the contribution of matching shocks. The series are constructed using the mode values of the parameters. As can be seen from the figure, credit shocks contribute significantly to the fluctuation of employment growth. We also observe that credit shocks contribute with some lag to the actual dynamics of employment. For example, during the last recession, credit shocks seem to have contributed to the decline in employment (negative growth) but not at the pick of the recession. This is fully consistent with the view that our

channel contributes to the sluggish recovery after the crisis hit. The initial drop was caused by something else including, perhaps, liquidity shocks propagated through the standard credit channel. As shown in Appendix D, the impact of liquidity shocks propagated through the standard credit channel could be captured in the model by the matching shock ξ_t .

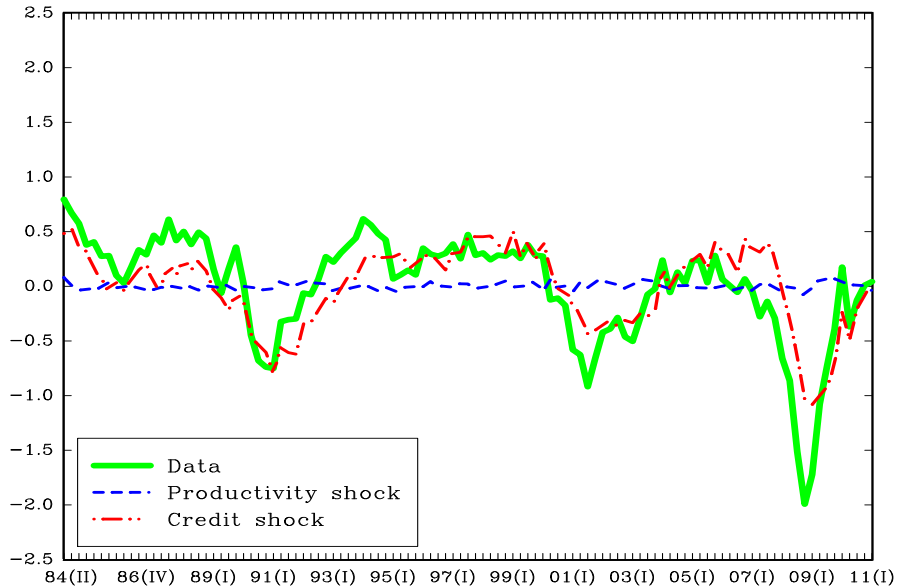


Figure 7: Decomposition of employment growth, 1984.I-2011.I. Estimation with three variables.

5.2 Estimation with four shocks and four variables

Since wages play a central role in our model, it would be desirable to include empirical series of wages in the estimation. However, once we add wages, we have four empirical series but only three shocks. Therefore, in order to perform the estimation we need to add a fourth shock. We choose to add *iid* measurement errors in the empirical series of wages. This seems the most natural choice since the general view is that the wage series are imperfectly measured. With this addition, we re-estimate the model using four empirical time series in first differences: (i) real log-GDP; (ii) log-employment in the non-farm sector; (iii) net issuance of debt in the business sector divided by business GDP; (iv) hourly real wages in non-farm business.

Table 4 reports the prior distributions, the mode and the thresholds for the bottom and top percentiles of the posterior distributions. Compared to the previous estimation we have two additional parameters: the standard deviation of the measurement error, σ_w and the parameter that determines the frequency of negotiation ψ . Since we include the wage series in the estimation, this parameter becomes relevant. The estimated mode is 0.182. This implies that the negotiation of wages for incumbent workers takes place on average every five/six quarters. The average debt-to-output ratio is about 0.45 and the period utility from unemployment is about 52 percent the period utility from being employed.

Table 4: Bayesian estimation with four variables.

<i>Estimated parameter</i>	<i>Prior[mean,std]</i>	<i>Mode</i>	<i>Posterior thresholds</i>	
			<i>Below 5%</i>	<i>Below 95%</i>
Productivity shock persistence, ρ_z	Beta[0.5,0.20]	0.942	0.923	0.944
Productivity shock volatility, σ_z	IGamma[0.001,0.05]	0.005	0.004	0.006
Credit shock persistence, ρ_ϕ	Beta[0.5,0.20]	0.967	0.964	0.978
Credit shock volatility, σ_ϕ	IGamma[0.001,0.05]	0.143	0.130	0.145
Matching shock persistence, ρ_ξ	Beta[0.5,0.20]	0.983	0.976	0.987
Matching shock volatility, σ_ξ	IGamma[0.001,0.05]	0.056	0.050	0.068
Matching share parameter, α	Beta[0.5,0.1]	0.647	0.614	0.648
Bargaining power workers, η	Beta[0.5,0.1]	0.665	0.644	0.666
Utility flow unemployed, a	Beta[0.4,0.1]	0.490	0.477	0.496
Mean enforcement parameter, $\bar{\phi}$	IGamma[8,5]	3.711	3.698	3.727
Negotiation frequency, ψ	Beta[0.25,0.05]	0.182	0.170	0.195
Std measurement error wages, σ_w	IGamma[0.001,0.05]	0.008	0.008	0.009
Mark-up parameter, ε	Beta[0.8,0.05]	0.940	0.938	0.956
Elasticity of effort, φ	Beta[1,0.1]	0.990	0.980	0.994

Table 5 reports the variance decomposition for the variable of interest and Figure 8 plots the time series contribution of productivity and credit shocks to employment growth. The estimation with the wage series reduces only slightly the contribution of credit shocks to the volatility of employment. The volatility of wages, however, is now mostly explained by measurement errors. The contribution of credit shocks to quarter by quarter employment shown in Figure 8 is very similar to the contribution resulting from the previous estimation without wages.

Table 5: Variance decomposition. Estimation with four variables

	<i>TFP shock</i> z	<i>Credit shock</i> ϕ	<i>Matching shock</i> ξ	<i>Measure error wages</i>
Output	50.1	24.7	25.2	0.0
Employment	0.5	49.3	50.2	0.0
New debt/output	0.2	65.9	33.9	0.0
Hourly wage	0.6	1.8	1.3	96.3

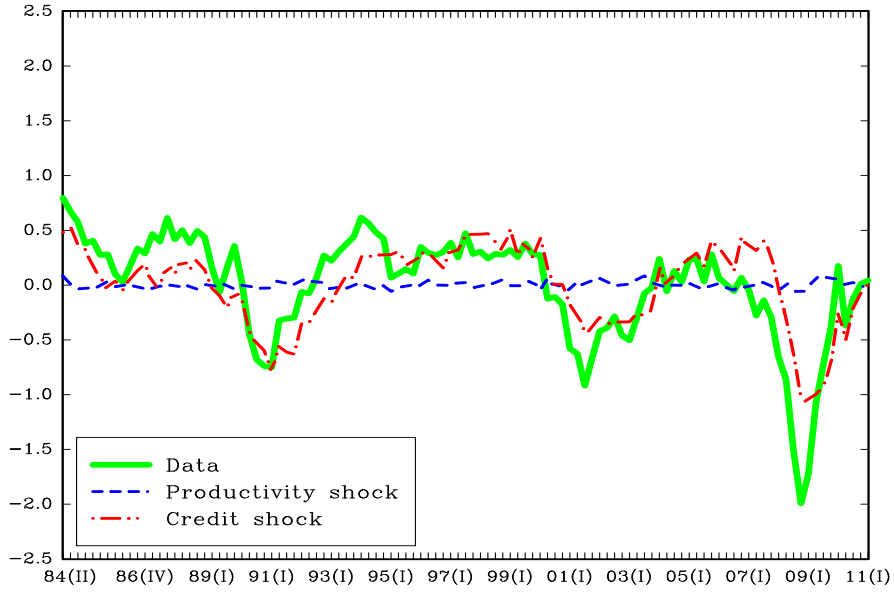


Figure 8: Decomposition of employment growth, 1984.I-20011.I. Estimation with four variables.

5.3 Capital accumulation and concave utility

To facilitate the presentation of our theory, we have abstracted from two popular features of standard business cycle models: capital accumulation and concave utility. In this section we extend the model along these two dimensions.

Although the addition of capital accumulation is straightforward, the extension with concave utility is more complex unless we make some simplifying

assumptions. In particular, we follow Merz (1995) and Andolfatto (1996) and assume that workers have the ability to insure the unemployment risk. With this assumption we do not have to worry about the distribution of wealth.

As in Cooley and Quadrini (1999) we specify the utility function as

$$E_0 \sum_{t=0}^{\infty} \beta^t \frac{\left[c_t + (1 - \chi_t)a - \chi_t \frac{A_t^{1+\varphi}}{1+\varphi} \right]^{1-\sigma}}{1 - \sigma}.$$

The variable χ_t is a dummy variable that denotes the employment status of the agent. Since agents have access to full unemployment insurance, they experience the same utility independent of the employment status. This implies that the consumption c_t differs between agents. In particular, employed workers have higher consumption in compensation for the dis-utility of working.

Capital is accumulated by households and is rented to firms at the market price r_t^k . Capital depreciates at rate δ . We assume that the firm and the worker split the net surplus from the match according to the share η . We would like to clarify that the sharing rule is an assumption that is not derived from Nash bargaining as in the case with risk neutral agents.⁹ The derivation of the surplus is very similar to the previous model with one important change: the discount factor is no longer constant. In particular, denoting by \mathcal{U}'_t the derivative of the period utility with respect to consumption, the discount factor is $\mathcal{M}_{t+1} = \beta \mathcal{U}'_{t+1} / \mathcal{U}'_t$. Also the risk-free interest rate is no longer constant but is equal to $r_t = 1 / \mathbb{E}_t \mathcal{M}_{t+1} - 1$. The detailed derivation is available upon request from the authors.

Once we have capital, we can add investment in the set of variables used for the estimation of the model, which in turn requires the addition of a shock. We add a shock to the investment technology since this is quite popular in computable general equilibrium models. More specifically, the law of motion of capital is specified as

$$k_{t+1} = (1 - \delta)k_t + \zeta_t i_t,$$

where ζ_t follows a first order autoregressive process with unitary mean.

⁹With risk averse agents, the Nash bargaining outcome is difficult to derive unless we assume that each worker belongs too a large family with an infinite number of members. In this case the assumed sharing rule can be considered the result of Nash bargaining.

We estimate the model with five shocks— z_t , ϕ_t , ξ_t , ζ_t and *iid* measurement errors on wages—and five time series—GDP, employment, investment, wages and net issuance of debt in the business sector. The estimated parameters with associated statistics are reported in Table 6 and the variance decomposition in Table 7. The contribution of credit shocks to employment fluctuations is very similar to the contribution obtained in the model without capital and linear utility. The quarter by quarter decomposition shown in Figure 9 is also similar.

Table 6: Bayesian estimation with five variables.

Estimated parameter	Prior[mean,std]	Mode	Posterior thresholds	
			Below 5%	Below 95%
Productivity shock persistence, ρ_z	Beta[0.5,0.20]	0.912	0.910	0.913
Productivity shock volatility, σ_z	IGamma[0.001,0.05]	0.009	0.008	0.010
Credit shock persistence, ρ_ϕ	Beta[0.5,0.20]	0.972	0.972	0.974
Credit shock volatility, σ_ϕ	IGamma[0.001,0.05]	0.145	0.140	0.144
Matching shock persistence, ρ_ξ	Beta[0.5,0.20]	0.982	0.981	0.982
Matching shock volatility, σ_ξ	IGamma[0.001,0.05]	0.057	0.055	0.058
Investment shock persistence, ρ_ζ	Beta[0.5,0.20]	0.966	0.966	0.968
Investment shock volatility, σ_ζ	IGamma[0.001,0.05]	0.001	0.001	0.001
Matching share parameter, α	Beta[0.5,0.1]	0.661	0.660	0.663
Bargaining power workers, η	Beta[0.5,0.1]	0.636	0.634	0.636
Utility flow unemployed, a	Beta[0.4,0.1]	0.445	0.440	0.444
Mean enforcement parameter, $\bar{\phi}$	IGamma[8,5]	3.488	3.485	3.488
Mark-up parameter, ε	Beta[0.8,0.05]	0.825	0.826	0.830
Elasticity of effort, φ	Beta[1,0.2]	1.110	1.107	1.111
Renegotiation frequency, ψ	Beta[0.25,0.05]	0.168	0.166	0.169
Measurement error volatility, ψ	IGamma[0.001,0.05]	0.009	0.008	0.009

Table 7: Variance decomposition. Estimation with five variables

	TFP shock z	Credit shock ϕ	Matching shock ξ	Investment shock ζ	Measure error wages
Output	64.9	16.9	16.2	2.0	0.0
Employment	0.3	51.8	47.9	0.0	0.0
New debt/output	0.1	64.0	35.9	0.0	0.0
Investment	16.5	22.6	16.0	44.9	0.0
Hourly wage	0.4	2.5	1.7	0.2	95.2

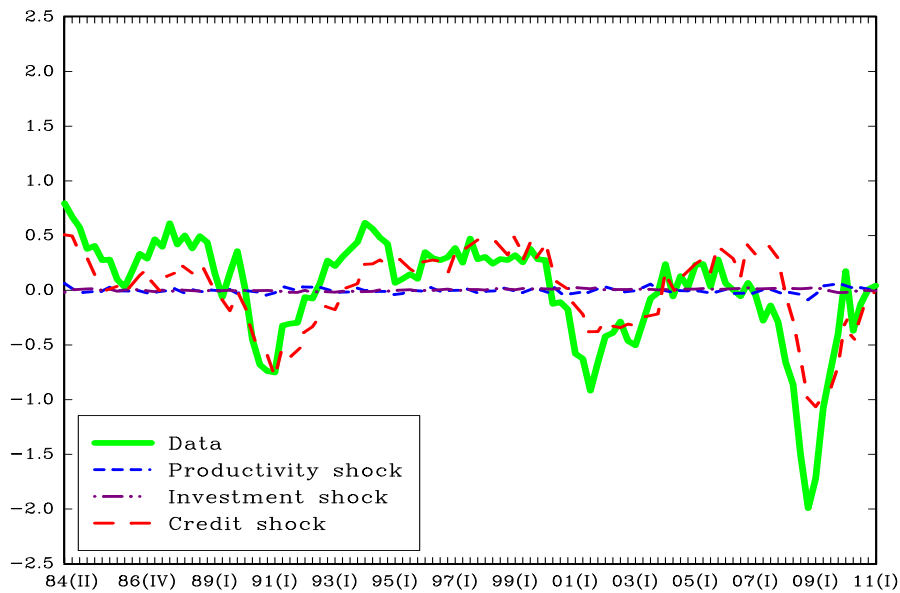


Figure 9: Decomposition of employment growth, 1984.I-2001.I. Estimation with five variables.

6 VAR estimation

In this section we further investigate the empirical relevance of credit shocks using a structural VAR where the shocks are identified through short-term restrictions that are derived from the theoretical model. Let's start with the theoretical model. The solution of the linearized system around the steady state has the following representation,

$$\begin{pmatrix} z_t \\ \phi_t \\ b_t \\ e_t \end{pmatrix} = \begin{bmatrix} \rho_z & 0 & 0 & 0 \\ 0 & \rho_\phi & 0 & 0 \\ a_{bz} & a_{b\phi} & a_{bb} & a_{be} \\ a_{ez} & a_{e\phi} & a_{eb} & a_{ee} \end{bmatrix} \begin{pmatrix} z_{t-1} \\ \phi_{t-1} \\ b_{t-1} \\ e_{t-1} \end{pmatrix} + \begin{pmatrix} \epsilon_{z,t} \\ \epsilon_{\phi,t} \\ 0 \\ \epsilon_{\xi,t} \end{pmatrix}, \quad (23)$$

where z_t is the aggregate productivity, ϕ_t is the variable that captures the aggregate financial conditions, $e_t = 1 - u_t$ is the employment rate, and b_t is the stock of debt at the beginning of the period. These four variables are the states of the dynamic (linearized) system and $\epsilon_{z,t}$, $\epsilon_{\phi,t}$, $\epsilon_{\xi,t}$ are innovations to productivity, credit and matching efficiency. For simplicity we assume that the shock to the matching technology is *iid*. The analysis that follows

will also go through with persistent matching shocks but with more complex innovations to the reduced form system.

Ideally, we would like to estimate directly the above dynamic system which is a first order VAR. This would be possible if we had data for each of the four variables. The problem is that we have data for z_t , b_t , e_t , but not for ϕ_t . Therefore, we have to use an alternative approach. The approach we use is to substitute out ϕ_t and ϕ_{t-1} using the third equation in system (23) evaluated at t and $t + 1$, that is,

$$\begin{aligned} b_t &= a_{bz}z_{t-1} + a_{b\phi}\phi_{t-1} + a_{bb}b_{t-1} + a_{be}e_{t-1}, \\ b_{t+1} &= a_{bz}z_t + a_{b\phi}\phi_t + a_{bb}b_t + a_{be}e_t. \end{aligned}$$

Using these two equations to eliminate the variables ϕ_t and ϕ_{t-1} in the second and fourth equations of system (23) we obtain

$$\begin{aligned} \begin{pmatrix} z_t \\ b_{t+1} \\ e_t \end{pmatrix} &= \begin{bmatrix} \rho_z & 0 & 0 \\ \psi_{bz} & \psi_{bb} & \psi_{be} \\ \psi_{ez} & \psi_{eb} & \psi_{ee} \end{bmatrix} \begin{pmatrix} z_{t-1} \\ b_t \\ e_{t-1} \end{pmatrix} + \begin{bmatrix} 0 & 0 & 0 \\ 0 & \gamma_{bb} & 0 \\ 0 & \gamma_{eb} & 0 \end{bmatrix} \begin{pmatrix} z_{t-2} \\ b_{t-1} \\ e_{t-2} \end{pmatrix} \\ &+ \begin{bmatrix} \pi_{zz} & 0 & 0 \\ \pi_{bz} & \pi_{bb} & \pi_{be} \\ 0 & 0 & \pi_{ee} \end{bmatrix} \begin{pmatrix} \epsilon_{z,t} \\ \epsilon_{\phi,t} \\ \epsilon_{\xi,t} \end{pmatrix} \end{aligned}$$

This is a second order dynamic system in three observable variables. The zeros in the matrix that multiplies the innovations $\epsilon_{z,t}$, $\epsilon_{\phi,t}$, $\epsilon_{\xi,t}$ provide the restrictions we use to identify the shocks. The first two restrictions impose that z_t is only affected by productivity innovations $\epsilon_{z,t}$, given the exogenous nature of this variable. The additional two restrictions impose that shocks to productivity and credit cannot affect employment at impact, which follows from the property that employment responds with one period lag.

There are additional restrictions that the structural model imposes to the VAR. However we only impose the short term restrictions just described which are sufficient for the identification of the three shocks.

Data: The three dimensional VAR is estimated using quarterly growth rates of TFP, Credit to the Private Sector and Employment over the period 1984.1-2009.3. TFP growth is based on the utilization-adjusted TFP series constructed by John Fernald (2009). The growth in private credit is

constructed using data from the Flow of Funds. Specifically, we use new borrowing (financial market instruments) for households and nonfinancial businesses divided by the stock of debt (again, financial market instruments). For employment we have three series: civilian employment from the BLS; employees in private industries also from the BLS; employees in the nonfarm sector from the Current Employment Statistics survey.

Impulse responses: We first estimate the VAR system with e_t measured by ‘employment in the private sector’ and five lags. Results using the other two definitions of employment (not reported) are similar.

The impulse response functions of Private Credit and Employment to credit and TFP shocks are plotted in Figure 10. As far as the credit shock is concerned, we see that this generates an expansion in the growth rate of private credit that lasts for many quarters. Therefore, these shocks tend to generate long credit cycles. Credit shocks generate an expansion in the growth rate of employment that is statistically significant for four quarters.

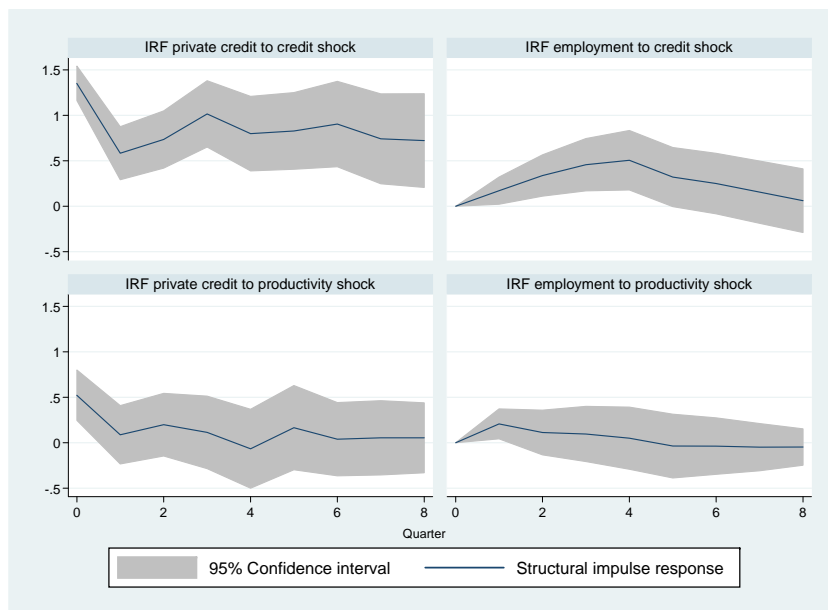


Figure 10: Three variables VAR: TFP, private credit and employment.

TFP shocks also generate an expansion in the growth rate of private credit but the impact is much less persistent. The growth rate of employment goes

up but the overall impact is smaller than the impact of credit shocks.

Overall, the results presented in Figure 10 are consistent with the properties of the theoretical model. In particular, we see that credit shocks have a statistically significant impact on employment and TFP shocks lead to a credit expansion. As long as a credit expansion allows for more job creation, the financial mechanism allows for some amplification of productivity shocks.

Separating the transmission through the credit channel: The VAR analysis described above does not allow us to separate the transmission mechanism of credit shocks emphasized in this paper from the typical credit channel. Separating our mechanism from a standard credit channel is a difficult task. Here we try a possible implementation which, however, is not strictly derived from the theoretical model.

The idea is as follows. If the importance of the credit channel is reflected in interest rate spreads, then a credit shock that changes the stock of debt but does not affect the interest rate spread can be identified as a shock that is transmitted through our channel, not the credit channel. To pursue this idea we extend the VAR by adding interest spreads. The short-term restrictions are then given by the zeros in the matrix that multiplies the innovations $(\epsilon_{z,t}, \epsilon_{\phi,t}, \epsilon_{\xi,t}, \epsilon_{r,t})$:

$$\begin{bmatrix} \pi_{zz} & 0 & 0 & 0 \\ \pi_{bz} & \pi_{bb} & \pi_{be} & \pi_{br} \\ 0 & 0 & \pi_{ee} & 0 \\ \pi_{rz} & 0 & \pi_{re} & \pi_{rr} \end{bmatrix}$$

The variables in the system are now (z_t, b_{t+1}, e_t, r_t) where r_t is the interest rate spread on corporate bonds. Therefore a credit shock is identified as an innovation that affects the stock of debt but it does not change, at impact, neither employment nor the credit spread. As common in the literature we use the difference in yields for Aaa and Baa rated bonds.

As can be seen from Figure 11, the response of employment to a credit shock does not change significantly with the inclusion of interest rate spreads. The estimation also suggests that credit spreads impact on employment but this is in addition to our channel.

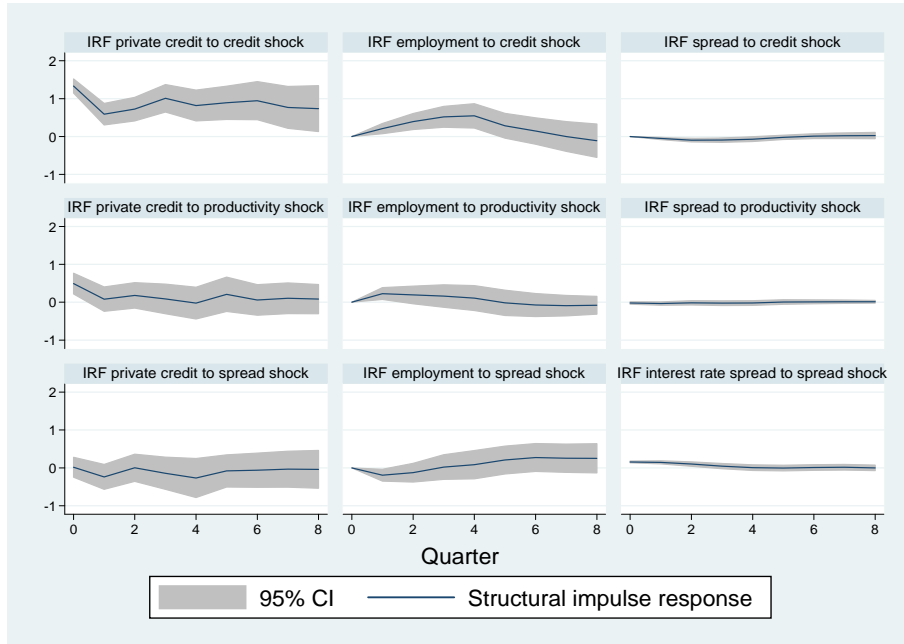


Figure 11: Four variables VAR: TFP, private credit, unemployment and corporate interest rate spreads.

7 Conclusion

In this paper we have studied the importance of financial flows for employment (and unemployment) fluctuations. We have extended the basic matching model by allowing firms to issue debt under limited enforcement of financial contracts. Our approach goes beyond a mere cumulation of frictions, respectively in financial and labor markets. Firms have an incentive to borrow in order to affect wage bargaining as emphasized in the corporate finance literature. The paper embeds this mechanism in a general equilibrium environment and investigates its role for the dynamics of aggregate employment.

The ability to borrow can change exogenously in response to credit shocks or endogenously in response to productivity shocks. Independently of the sources of credit expansion, higher debt allows firms to bargain more favorable wages. Through the structural estimation of the model we have shown that the contribution of credit shocks to employment fluctuation is quantitatively important. This findings are also supported by the estimation of a VAR whose identifying restrictions are derived from the structural model.

Appendix

A Wage equation

Consider the value of a filled vacancy defined in (14). Using the binding enforcement constraint $b_{t+1} = \phi_t(1 - \eta)\mathbb{E}_t S_{t+1}(B_{t+1})$ to eliminate b_{t+1} , the value of a filled vacancy becomes

$$Q_t = (1 + \phi_t)\beta(1 - \eta)\mathbb{E}_t S_{t+1}(B_{t+1}).$$

Next we use the free entry condition $V_t = q_t Q_t - \kappa = 0$. Eliminating Q_t using the above expression and solving for the expected value of the surplus we obtain

$$\mathbb{E}_t S_{t+1}(B_{t+1}) = \frac{\kappa}{q_t(1 + \phi_t)\beta(1 - \eta)}. \quad (24)$$

Substituting into the definition of the surplus—equation (10)—and taking into account that $b_{t+1} = \phi_t(1 - \eta)\mathbb{E}_t S_{t+1}(B_{t+1})$, we get

$$S_t(B_t) = z_t - a - b_t + \frac{[1 - \lambda - p_t\eta + \phi_t(1 - \lambda)(1 - \eta)]\kappa}{q_t(1 + \phi_t)(1 - \eta)}. \quad (25)$$

Now consider the net value for a worker,

$$W_t(B_t) - U_t = w_t - a + \eta(1 - \lambda - p_t)\beta\mathbb{E}_t S_{t+1}(B_{t+1})$$

Substituting $W_t(B_t) - U_t = \eta S_t(B_t)$ in the left-hand-side and eliminating $\mathbb{E}_t S_{t+1}(B_{t+1})$ in the right-hand-side using equation (24) we obtain

$$\eta S_t(B_t) = w_t - a + \frac{\eta(1 - \lambda - p_t)\kappa}{q_t(1 + \phi_t)(1 - \eta)} \quad (26)$$

Finally, combining (25) and (26) and solving for the wage we get

$$w_t = (1 - \eta)a + \eta(z_t - b_t) + \frac{\eta[p_t + (1 - \lambda)\phi_t]\kappa}{q_t(1 + \phi_t)},$$

which is the expression reported in (16).

B Monopolistic competition

Each firm, indexed by i , produces an intermediate good used in the production of final goods. The production function for final goods is

$$Y = \left(\int_0^N y_i^\varepsilon di \right)^{\frac{1}{\varepsilon}}. \quad (27)$$

Notice that the integral is over the interval $[0, N]$ since there are N producers equivalent to the number of employed workers. The inverse demand function is

$$P_i = Y^{1-\varepsilon} y_i^{\varepsilon-1}, \quad (28)$$

where P_i is the unit price for intermediate good i in terms of final goods and $1/(1-\varepsilon)$ is the elasticity of demand.

To make the monopolist structure relevant, we need to introduce some margin along which the firm can change the quantity of intermediate goods produced. One way to do this is to assume that there is also an intensive margin in the use of labor. Suppose that the production function for good i takes the form

$$y_i = z l_i, \quad (29)$$

where l_i is efforts or hours supplied by the worker with dis-utility cost $A l_i^{1+\varphi}/(1+\varphi)$. An alternative interpretation is that l_i represents costly utilization of labor.

The monopoly revenue is $P_i y_i$, that is, the unit price multiplied by output. Substituting the demand function (28) and the production function (29), the revenue can be written as $Y^{1-\varepsilon} (z l_i)^\varepsilon$. The optimal input l_i solves the problem

$$\max_{l_i} \left\{ Y^{1-\varepsilon} (z l_i)^\varepsilon - \frac{A l_i^{1+\varphi}}{1+\varphi} \right\}, \quad (30)$$

with first order condition $\varepsilon Y^{1-\varepsilon} z^\varepsilon l_i^{\varepsilon-1} = A l_i^\varphi$.

We can now impose the equilibrium condition $l_i = L$ and individual production becomes $y_i = zL$. Aggregate production is equal to $Y = zLN^{\frac{1}{\varepsilon}}$ and the unit price of intermediate goods is $P_i = P = N^{\frac{1-\varepsilon}{\varepsilon}}$. Finally, the individual revenue is equal to $zLN^{\frac{1-\varepsilon}{\varepsilon}}$.

Using these results in the first order condition for the intensive margin, we can solve for $L = \left(\frac{\varepsilon z}{A}\right)^{\frac{1}{\varphi}} N^{\frac{1-\varepsilon}{\varphi\varepsilon}}$. Then substituting in (30) and re-arranging, the revenue net of the dis-utility from working (net surplus flow) can be written as

$$\pi = \left[\left(\frac{\varepsilon}{A}\right)^{\frac{1}{\varphi}} \left(1 - \frac{\varepsilon}{1+\varphi}\right) \right] z^{\frac{1+\varphi}{\varphi}} N^{\frac{(1-\varepsilon)(1+\varphi)}{\varphi\varepsilon}}. \quad (31)$$

It is now easy to see the equivalence between this function and the net surplus flow reported in (20). If we define $\tilde{z} = \left[\left(\frac{\varepsilon}{A}\right)^{\frac{1}{\varphi}} \left(1 - \frac{\varepsilon}{1+\varphi}\right) \right] z^{\frac{1+\varphi}{\varphi}}$, which is a monotone function of z , and we define $\nu = \frac{(1-\varepsilon)(1+\varphi)}{\varphi\varepsilon}$, the surplus flow defined in (31) is exactly equal to (20).

C Model with infrequent negotiation

Suppose that wages are negotiated (bargained) when a new match is formed and then they are renegotiated in future periods with some probability ψ . In the interim periods wages are kept constant.

To avoid some unnecessary complications, we make the following assumption:

Assumption 1 *The enforcement constraint takes the form $\phi_t \mathbb{E}_t J_{t+1}(b_{t+1}) \geq b_{t+1}$, where $J_{t+1}(b_{t+1})$ is the next period equity value of the firm when the next period wage is renegotiated with certainty.*

This assumption insures that the borrowing limit is independent of the current wage, which is different across firms depending on the renegotiation history. In this way all firms continue to choose the same debt even if they pay different wages. The assumption that the collateral value depends on the equity value of the firm when the next period wage is renegotiated with certainty can be justified with the assumption that, in case of default, wages are always renegotiated. Since the lender gets a fraction of the firm's value, this assumption implies that the collateral is a fraction ϕ_t of the equity value of the firm when the next period wage is renegotiated with certainty (since wages are renegotiated in case of default). See Section 2 for the derivation of the enforcement constraint.

The value for a newly hired worker who bargains the first wage at time t is

$$W_t(b_t) = w_t + \beta \mathbb{E}_t \left\{ (1 - \lambda) \left[\psi W_{t+1}(b_{t+1}) + (1 - \psi) \overline{W}_{t,t+1}(b_{t+1}) \right] + \lambda U_{t+1} \right\}, \quad (32)$$

where $\overline{W}_{t,t+1}(b_{t+1})$ is the value at time $t + 1$ if there is not renegotiation and the worker receives the wage negotiated at time t . Therefore, the first subscript denotes the last period in which the wage was negotiated and the second subscript denotes the period in which the wage is paid.

The value of being unemployed is

$$U_t = a + \beta \mathbb{E}_t \left[p_t W_{t+1}(B_{t+1}) + (1 - p_t) U_{t+1} \right]. \quad (33)$$

Subtracting (33) to (32) and re-arranging we get

$$\begin{aligned} W_t(b_t) - U_t &= w_t - a + \beta \mathbb{E}_t \left\{ (1 - \lambda) \left[\psi \left(W_{t+1}(b_{t+1}) - U_{t+1} \right) + \right. \right. \\ &\quad \left. \left. (1 - \psi) \left(\overline{W}_{t,t+1}(b_{t+1}) - U_{t+1} \right) \right] - p_t \left(W_{t+1}(B_{t+1}) - U_{t+1} \right) \right\} \end{aligned} \quad (34)$$

Since in equilibrium $b_{t+1} = B_{t+1}$, we can rewrite the equation as

$$\begin{aligned} W_t(b_t) - U_t &= w_t - a + \beta \left[(1 - \lambda)\psi - p_t \right] \mathbb{E}_t \left(W_{t+1}(b_{t+1}) - U_{t+1} \right) + \\ &\quad \beta(1 - \lambda)(1 - \psi) \mathbb{E}_t \left(\overline{W}_{t,t+1}(b_{t+1}) - U_{t+1} \right) \end{aligned} \quad (35)$$

To simplify notations, define

$$\begin{aligned} \rho &= \beta(1 - \lambda)(1 - \psi) \\ \delta_t &= \beta \left[(1 - \lambda)\psi - p_t \right] \\ \hat{W}_t(b_t) &= W_t(b_t) - U_t \\ \widehat{\overline{W}}_{\tau,t}(b_t) &= \overline{W}_{\tau,t}(b_t) - U_t, \end{aligned}$$

where $\tau \leq t$ is the time subscript for the last period in which the wage was renegotiated. If $\tau = t$ we have $\widehat{\overline{W}}_{\tau,t}(b_t) = \hat{W}_t(b_t)$.

Using this notation, the net value of the worker can be written as

$$\hat{W}_t(b_t) = w_t - a + \delta_t \mathbb{E}_t \hat{W}_{t+1}(b_{t+1}) + \rho \mathbb{E}_t \widehat{\overline{W}}_{t,t+1}(b_{t+1}) \quad (36)$$

The next period value without bargaining is

$$\widehat{\overline{W}}_{t,t+1}(b_{t+1}) = w_t - a + \delta_{t+1} \mathbb{E}_{t+1} \hat{W}_{t+2}(b_{t+2}) + \rho \mathbb{E}_{t+1} \widehat{\overline{W}}_{t,t+2}(b_{t+2}) \quad (37)$$

Substituting in (36) at $t + 1, t + 2, t + 3, \dots$, the net value for the worker can be written as

$$\hat{W}_t(b_t) = \frac{w_t - a}{1 - \rho} + \Omega_t(b_t), \quad (38)$$

where the function $\Omega_t(b_t)$ is defined as

$$\Omega_t(b_t) = \mathbb{E}_t \delta_t \hat{W}_{t+1}(b_{t+1}) + \rho \mathbb{E}_t \delta_{t+1} \hat{W}_{t+2}(b_{t+2}) + \rho^2 \mathbb{E}_t \delta_{t+2} \hat{W}_{t+3}(b_{t+3}) + \dots$$

The function $\Omega_t(b_t)$ has a recursive structure and can be written recursively as

$$\Omega_t(b_t) = \delta_t \mathbb{E}_t \hat{W}_{t+1}(b_{t+1}) + \rho \mathbb{E}_t \Omega_{t+1}(b_{t+1}). \quad (39)$$

Using the bargaining outcome $\hat{W}_t(b_t) = \eta S_t(b_t)$ in (38) and (39), we obtain

$$\eta S_t(b_t) = \frac{w_t - a}{1 - \rho} + \Omega_t(b_t), \quad (40)$$

$$\Omega_t(b_t) = \eta\delta_t\mathbb{E}_t S_{t+1}(b_{t+1}) + \rho\mathbb{E}_t\Omega_{t+1}(b_{t+1}). \quad (41)$$

Finally, the surplus is the same as in the baseline model, that is,

$$S_t(b_t) = z_t - a - b_t + \frac{b_{t+1}}{R} + (1 - \lambda - \eta p_t)\beta\mathbb{E}_t S_{t+1}(b_{t+1}). \quad (42)$$

C.1 Evolution of aggregate wages

Denote by \bar{w}_{t-1} the average wage in period $t-1$. Then the average wage in period t is equal to

$$\bar{w}_t = \left(\frac{(1-\lambda)N_{t-1}}{N_t} \right) \left[(1-\psi)\bar{w}_{t-1} + \psi w_t \right] + \left(\frac{m(v_{t-1}, u_{t-1})}{N_t} \right) w_t, \quad (43)$$

where $m(v_{t-1}, u_{t-1})$ is the number of new matches.

To determine the average wage at time t , we need to know the average wage in the previous period and the share of employment that bargains a new wage at time t . This share is equal to

$$s_t = \frac{\psi(1-\lambda)N_{t-1} + m(v_{t-1}, u_{t-1})}{N_t}.$$

Using s_t , the average wage equation can be written as

$$\bar{w}_t = (1 - s_t)\bar{w}_{t-1} + s_t w_t.$$

C.2 Summary

The consideration of infrequent negotiation is captured by the following equations

$$\eta S_t(b_t) = \frac{w_t - a}{1 - \rho} + \Omega_t(b_t) \quad (44)$$

$$\Omega_t(b_t) = \eta\delta_t\mathbb{E}_t S_{t+1}(b_{t+1}) + \rho\mathbb{E}_t\Omega_{t+1}(b_{t+1}) \quad (45)$$

$$\bar{w}_t = (1 - s_t)\bar{w}_{t-1} + s_t w_t \quad (46)$$

$$s_{t+1} = \frac{\psi(1-\lambda)N_t + m(v_t, u_t)}{N_{t+1}} \quad (47)$$

Notice that equation (44) replaces the equation for the worker's value in the baseline model with period-by-period bargaining. Equations (45)-(47) are additional. The set of state variables is expanded with the new states s_t and \bar{w}_{t-1} .

D Costly financing and the credit channel

The paper has abstracted from frictions in financial markets that could affect more directly job creation. The only channel through which financial markets affect employment is the negotiation of wages. By doing so we have excluded the standard credit channel which, according to recent contributions, could also be important for the dynamics of the labor market. We now extend the model to allow for a more direct role of financial markets and we show that the credit channel cannot be easily separated from the efficiency of the matching function ξ_t . Thus, fluctuations in ξ_t could also result from shocks that affect the cost of external finance.

A typical feature of the matching model is that jobs are created through the posting of vacancies and this requires the payment of a cost κ . This cost has the typical features of an investment whose return takes place over several periods. We can then think of the debt raised by new firms as contributing to the financing of this investment. By further assuming that there are agency problems associated with the investment κ , we are able to introduce a more direct mechanism through which financing affects job creation. This additional mechanism has the feature of the standard credit channel.

Suppose that new firms raise debt before posting vacancy. In the baseline model we assumed that the debt was raised after knowing the outcome of the match. However, this different timing for initial borrowing is inconsequential. If the firm raises debt before posting a vacancy, the lender knows that the debt will not be repaid if the vacancy is not filled and this happens with probability $1 - q_t$. Anticipating this, the lender charges a higher interest but the expected cost of the debt for the firm is still $r = 1/\beta - 1$. The timing in subsequent periods remain the same.

As long as the lender can control the investment κ , that is, it can insure that the firm does post the vacancy and search for a worker, the different timing is irrelevant. The frictions arise if the lender has not full control over the use of the raised funds. In particular, we now assume that after receiving the loan, a new firm has the ability to default before incurring the cost κ . If the firm defaults, it retains the funds raised from the bank, that is, $\frac{b_{t+1}}{R^n}$, where R^n is the gross interest rate charged by the bank. The firm raises funds to finance κ but after receiving the funds it can default instead of investing. The value of default is the funds received from the lender, that is, $\frac{b_{t+1}}{R^n}$.

Alternatively, the firm could post the vacancy whose expected value is

$$V_t = - \left(\kappa - \frac{b_{t+1}}{R^n} \right) + q_t \beta (1 - \eta) \mathbb{E}_t S_{t+1}(b_{t+1}). \quad (48)$$

The first term in parenthesis is the equity financing of κ . Since the firm raises

b_{t+1}/R^n with debt, the difference must be financed with equity.

Because of free entry, the value of posting a vacancy is zero in equilibrium, that is, $V_t = 0$. Therefore, the value of defaulting, $\frac{b_{t+1}}{R^n}$, is bigger than the value of not defaulting, V_t . This implies that a new firm is unable to raise debt and the investment κ must be fully financed with equity.

Now suppose that the lender could enforce the investment κ with costly monitoring. Specifically, the lender can insure that the firm makes the investment by incurring the cost $\varrho_t \kappa$, where ϱ_t is stochastic and captures time-varying frictions in financial markets. This would make the cost of borrowing higher but allows the firm to borrow. Since the cost of debt is now higher than the cost of equity, would the new firm continue to borrow? As long as the monitoring cost ϱ_t is not too large and the bargaining power of workers η sizable, the firm prefers debt over equity because this allows to bargain lower wages in the event of a successful match.

Consider now the break-even condition for the lender which is equal to

$$\frac{b_{t+1}}{R^n} + \varrho_t \kappa = \frac{q_t b_{t+1}}{1+r}.$$

Using this condition to eliminate R^n in equation (48), the choice of debt for a new firm can be written as

$$V_t = \max_{b_{t+1}} \left\{ \frac{q_t b_{t+1}}{1+r} - (1 + \varrho_t) \kappa + \beta(1 - \eta) q_t \mathbb{E}_t S_{t+1}(b_{t+1}) \right\} \quad (49)$$

subject to

$$\phi_t(1 - \eta) \mathbb{E}_t S_{t+1}(b_{t+1}) \geq b_{t+1},$$

Competition for entry then implies that $V_t = 0$ and the free entry condition can be written as

$$(1 + \varrho_t) \kappa = q_t \left\{ \frac{b_{t+1}}{1+r} + \beta(1 - \eta) \mathbb{E}_t S_{t+1}(b_{t+1}) \right\},$$

which is very similar to the free entry condition in the baseline model. The only difference is the monitoring cost ϱ_t which was zero in the baseline model. Shocks to ϱ_t are equivalent to an increase in the cost of posting a vacancy and are similar to shocks studied in Petrosky-Nadeau (2009).

The new free entry condition makes clear that the monitoring cost cannot be easily separated from the matching shock. Since the probability of filling a vacancy is equal to $q_t = \xi_t(v_t/u_t)^{1-\alpha}$, what matters for job creation is the ratio $(1 + \varrho_t)/\xi_t$. It is in this sense that the matching shock ξ_t can be interpreted as also capturing the impact of shocks that affect employment through the standard credit channel.

References

- Andolfatto, D. (1996). “Business cycles and labor-market search”. *American Economic Review*, 86(1), 112–32.
- Atanassov, J., E.H. Kim (2009). “Labor and corporate governance: International evidence from restructuring decisions”. *Journal of Finance* 64, 341-74.
- Barro R. J. and D. B. Gordon (1983). “A Positive Theory of Monetary Policy in a Natural Rate Model”. *Journal of Political Economy*, 91(4), 589-610.
- Benmelech, E., N. K. Bergman and R. Enriquez (2011). “Negotiating with Labor Under Financial Distress”, NBER Working Paper No. 17192.
- Bernanke, B. and M. Gertler (1989). “Agency Costs, Net Worth, and Business Fluctuations”. *American Economic Review*, 79(1), 14-31.
- Bronars, S.G. and D.R. Deere (1991), “The Threat of Unionization: the Use of Debt and the Preservation of Shareholder Wealth”, *Quarterly Journal of Economics*, 119, 231-54.
- Chugh, S. K. (2009), “Costly External Finance and Labor Market Dynamics”. Unpublished manuscript, University of Maryland.
- Claessens, S., M. Ayhan Kose and M. E. Terrones (2008). “What Happens During Recessions, Crunches and Busts?”, *International Monetary Fund working paper*, 08/274, December.
- Cooley, T. F. and V. Quadrini (1999). “A Neoclassical Model of the Phillips Curve Relation”. *Journal of Monetary Economics*, 44(2), 165-93.
- Dasgupta, S. and K. Sengupta (1993). “Sunk Investment, Bargaining, and Choice of Capital Structure”, *International Economic Review*, 34(1), 203-220.
- Elsby, M., B. Hobijn, and A. Sahin (2010). “The Labor Market in the Great Recession”, *Brookings Papers on Economic Activity*, Spring 2010, 1-48.
- Fernald, J. (2009). “Utilization-adjusted quarterly-TFP series for the U.S. Business Sector”. Federal Reserve Bank of San Francisco.

- Gertler, M. and A. Trigari (2009). “Unemployment Fluctuations with Staggered Nash Wage Bargaining”. *Journal of Political Economy*, 117(1), 38-86.
- Hagedorn, M. and I. Manovskii (2008). “The Cyclical Behavior of Equilibrium Unemployment and Vacancies Revisited”. *American Economic Review*, 98(4): 1692–1706.
- Hall, R. and A. B. Krueger (2010). “Evidence on the Determinants of the Choice between Wage Posting and Wage Bargaining”. NBER Working Paper No. 16033.
- International Monetary Fund (2009). *World Economic Outlook*, Chapter 3, April.
- Jermann, U. and V. Quadrini (2012). “Macroeconomic Effects of Financial Shocks”. *American Economic Review*, 102(1).
- Kiyotaki, N. and J. H. Moore (1997). “Credit Cycles”. *Journal of Political Economy*, 105(2), 211-48.
- Kocherlakota, N. (2010). “Inside the FOMC”. *Speech at Marquette, Michigan on August 17, 2010*.
- Matsa D. A. (2010). “Capital Structure as Strategic Variable: Evidence from Collective Bargaining”. *Journal of Finance*, Vol. LXV, No. 3, June.
- Merz, M. (1995). “Search in the Labor Market and the Real Business Cycle”. *Journal of Monetary Economics*, 36(2), 269-300.
- Mian, A. and A. Sufi (2011). “What Explains High Unemployment? The Aggregate Demand Channel”. Unpublished manuscript, UC Berkeley and University of Chicago Booth.
- Michelacci C. and V. Quadrini (2009). “Financial Markets and Wages”. *Review of Economic Studies*, 76(2), 795-27.
- Modigliani, F., and M. H. Miller (1958). “The Cost of Capital, Corporate Finance and the Theory of Investment”. *American Economic Review*, 48(3), 261-97.

- Petrongolo B. and C. A. Pissarides (2001). "Looking into the Black Box: A Survey of the Matching Function". *Journal of Economic Literature*, 39(2), 390-431.
- Petrosky-Nadeau, N. (2009). "Credit, Vacancies and Unemployment Fluctuations". Unpublished manuscript, Carnegie Mellon University.
- Pissarides, C. A. (1987). "Search, Wage Bargains and Cycles". *Review of Economic Studies*, 54(3), 473-83.
- Reinhart, C. M. and K. S. Rogoff (2009). *This Time Is Different: Eight Centuries of Financial Folly*. Princeton University Press, Princeton, New Jersey.
- Shimer, R. (2005). "The Cyclical Behavior of Equilibrium Unemployment and Vacancies". *American Economic Review*, 95(1), 25-49.
- Wasmer, E. and P. Weil (2004). "The Macroeconomics of Labor and Credit Market Imperfections". *American Economic Review*, 94(4), 944-63.