

A Note on Restaurant Pricing and Other Examples of Social Influences on Price

Gary S. Becker

University of Chicago

This note tries to explain why many successful restaurants, plays, sporting events, and other activities do not raise prices even with persistent excess demand. My approach assumes that demand by a typical consumer is positively related to quantities demanded by other consumers. This can explain not only the puzzle about prices but also why consumer demand is often fickle, why it is much easier to go from being “in” to being “out” than from “out” to “in,” and why supply does not increase to reduce the excess demand.

A popular seafood restaurant in Palo Alto, California, does not take reservations, and every day it has long queues for tables during prime hours. Almost directly across the street is another seafood restaurant with comparable food, slightly higher prices, and similar service and other amenities. Yet this restaurant has many empty seats most of the time.

Why doesn't the popular restaurant raise prices, which would reduce the queue for seats but expand profits? Several decades ago I asked my class at Columbia to write a report on why successful Broadway theaters do not raise prices much; instead they ration scarce seats, especially through delays in seeing a play. I did not get any satisfactory answers, and along with many others, I have continued to be

I am indebted for helpful comments to Ted Bergstrom, Bruno Frey, David Friedman, Milton Harris, Eugene Kandel, Edward Lazear, Kevin M. Murphy, Sherwin Rosen, and George Stigler and to the participants in a Seminar on Rational Choice in the Social Sciences at the University of Chicago and to the Lynde and Harry Bradley Foundation and the Hoover Institution for support.

[*Journal of Political Economy*, 1991, vol. 99, no. 5]

© 1991 by The University of Chicago. All rights reserved. 0022-3808/91/9905-0009\$01.50

puzzled by such pricing behavior. The same phenomenon is found in the pricing of successful sporting events, such as the World Series and Super Bowls, and in a related way in the pricing of best-selling books. This note suggests a possible solution to the puzzle based on social interactions.

The puzzle is easily shown in a supply-demand diagram, in which S in figure 1 is the number of restaurant tables, theater seats, and so forth, and d_1 is the usual negatively inclined demand curve. At a price of p_0 , the S units sold must be rationed, with $D_0 - S$ being the excess demand at that price. Clearly, profits increase if price is raised to p_e since S units are still sold, but at a higher price. The profit-maximizing price is even higher if d_1 is inelastic at p_e .

Many explanations have been suggested for apparently nonmaximizing prices such as p_0 . It could be a tax dodge if speculators who sell tickets at a higher price than p_0 share profits with owners or employees that are not reported as taxable income. A similar story applies to the *maître d'* who provides scarce tables to customers willing to pay "under the table." However, it is unclear why such tax evasion or principal-agent conflicts should be more common with successful plays and restaurants than with the sale of steel or oranges. Moreover, nonprice rationing apparently existed on Broadway long before tax considerations were important.

Price increases will be discouraged if consumers believe that they are unfair (see Kahneman, Knetsch, and Thaler 1986). This may sometimes help explain why prices do not rise to take advantage of temporary shortfalls in supply, but it is not plausible when rationing is more permanent. A series of gradual price increases could eliminate the gap in figure 1 without causing serious complaints about unfair pricing.

In this note I provide a different explanation, which assumes that a consumer's demand for some goods depends on the demands by other consumers. The motivation for this approach is the recognition that restaurant eating, watching a game or play, attending a concert, or talking about books are all social activities in which people consume a product or service together and partly in public.

Suppose that the pleasure from a good is greater when many people want to consume it, perhaps because a person does not wish to be out of step with what is popular or because confidence in the quality of the food, writing, or performance is greater when a restaurant, book, or theater is more popular. This attitude is consistent with Groucho Marx's principle that he would not join any club that would accept him.

Formally, I propose that the demand for a good by a person de-

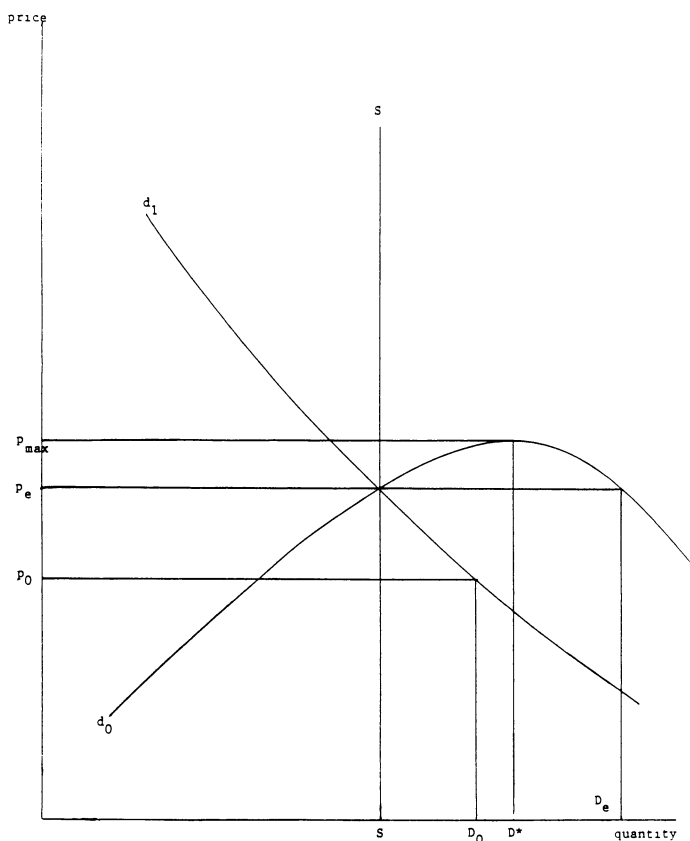


FIG. 1

pendes positively on the aggregate quantity demanded of the good:

$$D = \sum d^i(p, D) = F(p, D), \quad F_p < 0, F_d > 0, \quad (1)$$

where $d^i(p, D)$ is the demand of the i th consumer, and D is the market demand. For each value of D , the equilibrium price solves $D = F(p, D)$. Since $F_p < 0$, there is a unique price for each feasible level of demand, given by the inverse demand function, $p = G(D)$. There are formal similarities between the effects of social interactions and the gains from standardization (see, e.g., Farrell and Saloner 1988).

Social interactions imply that $\partial G / \partial D$ may not be negative. As is well known, $F_d > 0$ can lead to a positive relation between price and aggregate demand. By differentiating equation (1), we get

$$\frac{dp}{dD} = G_d = \frac{1 - F_d}{F_p}. \quad (2)$$

If the social interaction is strong enough—if $F_d > 1$ —an increase in aggregate demand would increase the demand price. If $F_d > 1$ for all $D < D^*$, $F_d = 1$ for $D = D^*$, and $F_d < 1$ for $D > D^*$, the demand price rises as D increases for $D < D^*$, it hits a peak when $D = D^*$, and then it falls as D increases beyond D^* (see d_0 in fig. 1).

Since d_0 is rising at the market-clearing price p_e , it obviously pays to raise price above p_e : no less is sold and each unit fetches more. Indeed, profits are maximized when the price equals p_{\max} , the peak demand price. The positively inclined demand curve in the vicinity of S explains why popular restaurants remain popular despite “high” prices. Obviously, demand must be rationed at p_{\max} since D^* exceeds S . To simplify the discussion, I assume that the method used to ration demand is costless, such as a pure lottery system, so that the money price is the full cost to consumers.

Since a firm that charges p_{\max} has a permanent gap measured by the difference between D^* and S , shouldn't it raise price still further, cut the gap, and make even more profits? The answer from figure 1 is clear: demand is discontinuous at p_{\max} for price increases and falls to zero even for trivial increases. The reason for the discontinuity is clear. If demand fell only a little (say to D_1) at $p = p_{\max} + \epsilon$, there would be multiple demand prices at D_1 : p_1 and $p_{\max} + \epsilon$. We know that demand price is unique at D_1 and at all other values of D . Hence demand must fall to zero when $\epsilon > 0$, no matter how small ϵ is.

Of course, demand curves like d_0 that first rise and then fall are not the only possible outcome of the positive effect of market demand on the quantities demanded by each consumer. The net effect could be a demand curve that is negatively inclined (when F_d is always less than one, as d_1 in fig. 1), or it could be the demand d in figure 2 that is first negatively sloped, becomes positively sloped for some D , and then becomes negatively sloped again. The firm would like to charge p^* in figure 2 and sell all S units, with demand at D_g^* and the gap being sizable. This equilibrium is similar to the equilibrium at p_{\max} in figure 1.

However, if the firm simply chooses the price p^* , demand may be at D_b^* rather than at D_g^* since demand has two values at p^* . Moreover, D_b^* is not an attractive equilibrium since the excess capacity ($S - D_b^*$) is substantial. If the firm must have an inferior equilibrium, it prefers p_e to p^* since marginal revenue is zero when $p = p_e < p^*$ and $D = D_e < S$.

Consequently, there are two competing locally profit-maximizing equilibria: one has excess capacity and a low price ($S - D_e$, p_e), and the other has excess demand and a high price ($D_g^* - S$, p^*). The difference between these equilibria corresponds to the difference be-

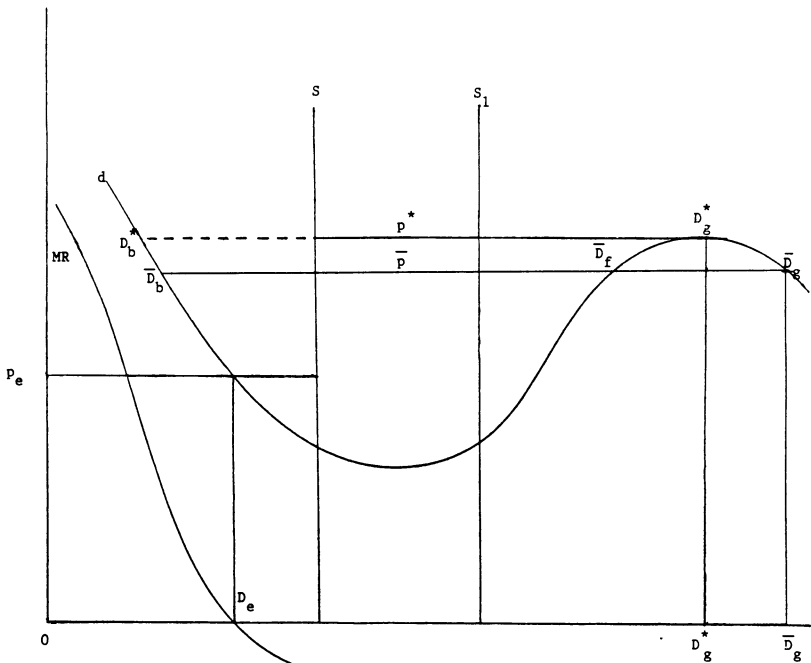


FIG. 2

tween a struggling restaurant or play with excess tables or seats and a highly successful one that is “in” and turns away would-be customers.

Obviously, producers prefer the excess demand equilibrium, but how can they help bring that about? Since each consumer demands more when others do, producers can try to coordinate consumers to induce them to raise their demands together.

Advertising and publicity may help, for these have a multiplier effect when consumers influence each other. Advertising that raises the demands of some consumers also indirectly raises the demands of other consumers since higher consumption by those vulnerable to publicity campaigns stimulates the demands of others. This explains the promotion of new books, and it suggests that goods with bandwagon properties tend to be heavily advertised.

The distinctive equilibria at $D = D_e$ and $D = D_g^*$ are a formal recognition of the well-known fact mentioned at the beginning that one restaurant may do much better than another one, even though they have very similar food and amenities. The success or failure of new books is an equally good example. Stephen Hawking's *A Brief History of Time* was on the *New York Times* best-seller list for over 100 weeks and sold more than 1.1 million hardcover copies. Yet I doubt

if 1 percent of those who bought the book could understand it. Its main value to purchasers has been as a display on coffee tables and as a source of pride in conversations at parties.

The inequality in book sales is large: the coefficients of variation in total sales to August 1989 of books issued in 1987–88 by one publisher exceeded 129 percent and 177 percent for hardcover fiction and nonfiction books, respectively (the data were supplied to me by Eugene Kandel). The success or failure of trade books—like that of restaurants, plays, and other events—often depends on fortuitous factors that help sales snowball when they catch on and sink when they flop.

Figure 2 can explain an important characteristic of book pricing: the price of the hardcover edition almost never increases when a book turns out to succeed, nor until remaindering does it fall so much if it flops (see the analysis and evidence in Kandel [1990]). The reason is that p^* is more or less the optimal price whether the book flops or not, assuming that demand is quite inelastic for $p < p^*$ (so that p_e is close to p^*). Publishers set a price of p^* and hope for success, but they recognize that they may end up with many unsold copies ($S - D_g^*$) that are mainly useful in the remainder market and for the paper content.

The “fickleness” of consumers evident in the shift of restaurants between “in” and “out” categories is also captured by this analysis. Although the equilibrium at (p_e, D_e) is locally stable, the one at (p^*, D_g^*) is not stable for shocks that reduce demand, and neither equilibrium is stable for large changes. If consumers at (p^*, D_g^*) lose confidence that other consumers want the good, demand will drop all the way to D_b^* .

This analysis explains too another commonly noted phenomenon: it is much easier to go from being “in” to being “out” than from being “out” to being “in.” Since the equilibrium at (p_e, D_e) is locally stable in *both* directions, only a large upward shock to demand could shift that “out” equilibrium to the more profitable one at (p^*, D_g^*) .

The partial instability of the profitable equilibrium at (p^*, D_g^*) may also explain a puzzle about supply. If price is not raised when demand exceeds supply, why doesn’t output expand to close the gap? That does happen for best-sellers, where unexpected heavy demand is usually met by additional printings. Sometimes, too, restaurants faced with excess demand expand seating capacity, but often they do not. One explanation for why they do not expand is that restaurants know customers are fickle and a booming business is very fragile. They might be reluctant to expand capacity if demand at p^* could suddenly fall from D_g^* to D_b^* . The cost of an expansion in capacity from, say, S to S_1 could then drive a restaurant into bankruptcy.

Another possible explanation of why supply does not grow is that aggregate demand depends not only on price and aggregate demand but also positively on the gap between demand and supply:

$$D = \Sigma d'\left(p, D, \frac{D}{S}\right) = F\left(P, D, \frac{D}{S}\right), \quad \frac{\partial F}{\partial d/s} > 0. \quad (3)$$

Greater supply might not pay because that lowers the gap and, hence, the optimal price available to a producer.

This may explain why customers who have trouble getting into the popular Palo Alto restaurant mentioned at the beginning of this note do not switch to the nearby unpopular one. When I suggest doing this to my wife, she usually answers that she prefers the amenities at the popular restaurant. But the main difference in "amenities" is that one restaurant is crowded and has queues, while the other one is partially empty and provides immediate seating!

The gap between what is demanded and what is supplied affects demand when consumers get utility from competing for goods that are not available to everyone who wants them—such as an exclusive club—or when the camaraderie on a queue itself delivers utility. Of course, entering the gap into the demand function to explain why supply does not increase appears to be an ad hoc invention of a "good" to solve a puzzle. Therefore, I do not want to overemphasize the importance of the gap between demand and supply, although I do believe that it is sometimes relevant.

In an insightful comment, Ted Bergstrom was disturbed by the leftward instability of the equilibrium at (p^*, D_g^*) and proposed a somewhat different approach. In his model, typical consumers prefer a larger aggregate demand only up to some fraction of capacity; beyond that they find a restaurant, theater, and so forth "too crowded." He shows that this can lead to a locally *stable* high-price profit-maximizing equilibrium in which demand equals capacity. Bergstrom's suggestion is valuable for some problems, but the model in this note seems better suited to the best-seller phenomenon, persistent excess demand, and the much greater fragility of being an "in" activity than an "out" activity.

Moreover, a restaurant could increase the leftward stability of a high-price equilibrium by lowering price in figure 2 below p^* , say to $\bar{p} < p^*$, which has a demand at $\bar{D}_g > D_g^*$. The seller might be willing to trade off a lower price than p^* for a more stable equilibrium: the point (\bar{p}, \bar{D}_g) is stable not only for increases in demand but also for some shocks that lower demand. However, \bar{p} does not avoid but magnifies the multiple equilibrium problem since there is the unstable equilibrium at \bar{D}_f as well as the excess capacity locally stable equilibrium at \bar{D}_b .

It may strike some readers as ad hoc to make a person's demand depend on the demands of others in order to explain why restaurants, theaters, publishers, and others do not raise price when demand exceeds supply. But economists have paid insufficient attention to direct social influences on behavior. Fortunately, social interactions finally are being incorporated into economic models to explain residential segregation and neighborhood "tipping," custom, pay structure, gambling, and other behavior (for some examples, see Becker [1974]; Schelling [1978]; Akerlof [1980]; Brenner [1983]; Jones [1984]; Frank [1985]; Granovetter [1985]; Bond and Coulson [1989]). Therefore, the analysis in this note fits well into a growing economic literature that recognizes the influence on consumers and workers of the social world they live in.

References

- Akerlof, George A. "A Theory of Social Custom, of Which Unemployment May Be One Consequence." *Q.J.E.* 94 (June 1980): 749–75.
- Becker, Gary S. "A Theory of Social Interactions." *J.P.E.* 82 (November/December 1974): 1063–93.
- Bond, Eric W., and Coulson, N. Edward. "Externalities, Filtering and Neighborhood Change." *J. Urban Econ.* 26 (September 1989): 231–49.
- Brenner, Reuven. *History: The Human Gamble*. Chicago: Univ. Chicago Press, 1983.
- Farrell, Joseph, and Saloner, Garth. "Coordination through Committees and Markets." *Rand J. Econ.* 19 (Summer 1988): 235–52.
- Frank, Robert H. *Choosing the Right Pond: Human Behavior and the Quest for Status*. New York: Oxford Univ. Press, 1985.
- Granovetter, Mark. "Economic Action and Social Structure: The Problem of Embeddedness." *American J. Sociology* 91 (November 1985): 481–510.
- Jones, Stephen R. G. *The Economics of Conformism*. Cambridge, Mass.: Blackwell, 1984.
- Kahneman, Daniel; Knetsch, Jack L.; and Thaler, Richard. "Fairness as a Constraint on Profit Seeking: Entitlements in the Market." *A.E.R.* 76 (September 1986): 728–41.
- Kandel, Eugene. "Intertemporal Pricing in the Book Publishing Industry." Manuscript. Rochester, N.Y.: Univ. Rochester, Simon School Management, 1990.
- Schelling, Thomas C. *Micromotives and Macrobehavior*. New York: Norton, 1978.