

Do Fiscal Rules Matter?*

Veronica Grembi[†] Tommaso Nannicini[‡] Ugo Troiano[§]

This version, October 2015

Abstract

Fiscal rules are laws aimed at reducing the incentive to accumulate debt, and many countries adopt them to discipline local governments. Yet, their effectiveness is disputed because of commitment and enforcement problems. We study their impact applying a quasi-experimental design in Italy. In 1999 the central government imposed fiscal rules on municipal governments, and in 2001 relaxed them below 5,000 inhabitants. We exploit the before/after and discontinuous policy variation, and show that relaxing fiscal rules increases deficit and lowers taxes. The effect is larger if the mayor can be reelected, the number of parties is higher, and voters are older.

JEL codes: C21, C23, D78, H62, H72, H77.

Keywords: fiscal rules, local government finance, difference-in-discontinuities.

*A previous version of this paper circulated under the title “Policy Responses to Fiscal Restraints: A Difference-in-Discontinuities Design.” We thank Alberto Alesina, Robert Barro, Raj Chetty, and Larry Katz for detailed suggestions. We thank Philippe Aghion, Roland Benabou, David Cutler, John Friedman, Ed Glaeser, Josh Hausman, Nathan Hendren, Brian Knight, David Laibson, Amanda Pallais, Per Pettersson-Lidbom, László Sándor, Frank Schilbach, and seminar participants at Bank of Italy, Bologna University, Boston University, CELS 2012 Northwestern University, CEPR Public Policy Symposium 2012, Catholic University of Milan, CIFAR, CeSiFo, CREI, CSEF Naples, Erasmus University Rotterdam, Harvard Development, Labor and Macro Lunch, IGIER-Bocconi, IIES, NBER SI 2012, UCSD, University of Michigan, and USI Lugano for insightful comments. Errors are ours and follow a random walk. Financial support is gratefully acknowledged from Catholic University of Milan for Grembi; the ERC (Grant No. 230088) and Bocconi for Nannicini; Harvard Department of Economics and Multidisciplinary Program in Inequality & Social Policy, Bank of Italy and Bradley for Troiano. We also thank Giancarlo Verde, Carmine La Vita, Daniela De Marte (Italian Ministry of the Interior), and Salvatore Parlato (Ifel-ANCI) for help with data collection.

[†]Copenhagen Business School; vg.jur@cbs.dk

[‡]Bocconi University, IGIER, CEPR, and IZA; tommaso.nannicini@unibocconi.it

[§]*Corresponding author:* University of Michigan and NBER; troiano@umich.edu

1 Introduction

Fiscal rules are laws designed to constrain fiscal policy. Many countries have adopted fiscal rules to discipline local governments, including Argentina, Austria, Brazil, Canada, China, Colombia, Czech Republic, Denmark, Italy, Mexico, Poland, Spain, Sweden, and Turkey. In all of the above mentioned countries fiscal rules are imposed by the national government on local governments.¹ Despite their wide diffusion, there is no consensus about whether fiscal restraints matter for increasing fiscal stability. A number of studies have argued that there are several reasons why fiscal rules might be ineffective in restraining fiscal policy (see the reviews by Alesina and Perotti, 1996, and Wyplosz, 2012), for instance because of commitment or enforcement problems.²

Studying whether fiscal rules matter for policies is challenging. The search for a definitive conclusion about how fiscal rules affect fiscal policy has been hampered by the potentially endogenous decision of whether to adopt a fiscal rule in the first place (Poterba, 1996, or Alesina and Perotti, 1996).³ In this paper, we study the effect of relaxing fiscal restraints at the local government level. We first show quasi-experimentally that fiscal rules do matter for restraining the accumulation of debt and that fiscal adjustment seem to be concentrated on revenues. We then give evidence suggesting that the adjustment is driven by cities with more political distortions.

Our testing ground is Italy, where the central government set a target on deficit reduction for all municipal governments in 1999—the so called “Domestic Stability Pact,” DSP

¹Although in a few countries fiscal rules are self-imposed by fiscal authorities, it should be noted that one of the most cited example of fiscal rules, the European Stability Pact, is also not self-imposed, but imposed by the European Union on the member countries.

²The fact that subnational policy makers have limited discretion in changing fiscal policy is the central reason for which fiscal rules on local governments might not work. Furthermore, most fiscal rules, including those we study, are not embedded in the Constitution. This implies that fiscal responsibility laws can be frequently changed and revised, and they might suffer from the same time inconsistency problem that characterizes fiscal policy. Additionally, Alesina and Perotti (1996) argue that lax enforcement is one of the reasons why fiscal rules might not work. This concern, however, is more relevant at the national level, since at the local level the central government can be a credible enforcement authority. Finally, rules usually target only some parts of the budget and this offers opportunities for policy makers to sidestep the rules by complying with them without changing the overall fiscal discipline—see Milesi-Ferretti (2003).

³As indicated by Drazen (2002) in a review article: “A key question (perhaps the key question) about fiscal rules is whether they have the effect of slowing the growth of deficits.” Furthermore, there has been limited investigation on fiscal rules at the local government level, where forms of “hidden” public debt can grow and raise fears about the overall financial sustainability of a country. For a review of the current state of the literature, see Glaeser (2013).

henceforth—and relaxed it for municipalities below 5,000 inhabitants in 2001. The main rule established by the DSP imposed a gradual reduction of the “fiscal gap,” defined as the municipal deficit net of transfers and debt service.⁴ In the regulatory environment we study, there is a central authority that can collect standardized public accounts and enforce punishment for non-compliers. Yet, the approval of the DSP was accompanied by widespread skepticism about its effectiveness, because Italy usually ranks last among OECD countries in ratings of law enforcement and government effectiveness (e.g., see Kaufmann, Kraay, and Mastruzzi, 2010). In other words, our results suggest that the lessons we draw from Italian cities on the effectiveness of fiscal restraints may extend to other regulatory environments where the fiscal authority setting the rules faces critical ex-ante commitment problems.

To study the effects of relaxing the fiscal rules, we can not adopt a regression discontinuity design because there is another policy, the salary of the mayor, that changes sharply at the threshold of 5,000 inhabitants. We can not apply a difference-in-differences design because large and small municipalities are typically on differential trends in public policies.⁵ Therefore we combine two sources of variation, before/after 2001 and just below/above 5,000 inhabitants, and implement a “difference-in-discontinuities” (or “diff-in-disc”) design: taking the difference between the pre-treatment and the post-treatment discontinuity at 5,000 inhabitants, in order to difference out the effect of the salary of the mayor. We propose and verify a set of diagnostic tests for this design.

We divide our empirical analysis into three parts. First, we analyze the effects of relaxing fiscal restraints on the deficit, which is the main policy variable of interest, and on the fiscal gap, which is the main target of the law. We find that relaxing fiscal rules translates into a larger fiscal gap of about 30 percent over the course of the following four years. This large effect on the main target of the DSP has real consequences for policy outcomes, as unconstrained municipalities increase their deficit by about 20 Euros per capita (2 percent of the total budget). The magnitude of the effects appear to be sensitive to the bandwidth

⁴The rationale for the exemption of municipalities with less than 5,000 inhabitants in 2001 was to avoid burdening very small towns with onerous requirements, as they may be disadvantaged by economies of scale in managing the municipal government. The penalties put in place for not complying with the DSP included a cut in the annual transfers from the central government, a ban on new hires, and a cut on reimbursement and non-absenteeism bonuses.

⁵We verify in Appendix Figure A1 that the assumption of parallel trends does not hold in a standard difference-in-differences design.

that we consider.

In the second part of our empirical analysis, we study the composition of the fiscal adjustment, by analyzing municipal financial reports and administrative data on municipal tax rates, which are set by the local policy makers. We find that unconstrained municipalities have statistically similar expenditure levels compared to constrained ones, although the standard errors are large, also because of the presence of outliers. Additionally, we find that unconstrained municipalities have lower tax revenues. This difference can be partially explained by the additional finding that municipalities for which fiscal rules are relaxed set lower tax rates. The main tax rates decided by Italian cities are a real estate tax rate on home property (*Imposta Comunale sugli Immobili*, ICI), which provides almost 50 percent of municipal tax revenues, and a surcharge on the personal income tax (*Imposta sul Reddito delle Persone Fisiche*, IRPEF), which amounts for about 10 percent of municipal tax revenues. Cities for which fiscal rules are relaxed have both a lower real estate tax rate (by about 14 percent) and a lower income tax surcharge (by about 30 percent) after the policy shift. The fact that we find an effect not only for the target of the DSP, but also both for the main policy variable of interest not targeted by the law (deficit) and for tax rates, alleviates concerns arising from the possibility of creative accounting.

Finally, in the third part of the analysis, we exploit the fact that our setup—that is, an exogenously imposed fiscal destabilization—can provide new evidence on when fiscal restraints matter the most. On the one hand, the optimal tax smoothing theory would suggest that the main cost of imposing fiscal rules is restricting countercyclical deficits.⁶ On the other hand, fiscal restraints might increase welfare if deficit is the suboptimal result of the interplay between rational politicians, voters, and interest groups.

We first study if the relaxation of fiscal rules is affected by whether the mayor faces a binding term limit or not. We find that the increase in deficit arises only for mayors who can be reelected. This result is consistent with models linking deficits to reelection incentives (see Aghion and Bolton, 1990) or to politicians' pandering to voters (see Maskin and Tirole, 2004).

We then see whether municipalities with a different number of political parties represented in the local legislative assembly reacted differently to the relaxation of the restraints. Our

⁶See Barro (1974), Barro (1979), and Lucas and Stokey (1983).

results show that the higher the number of parties, the more the deficit increased after the relaxation of the restraint. This finding may be consistent with models that explain fiscal instability as the result of political fragmentation and of dynamic common pool (see Persson and Tabellini, 2000), although this is one among the many potential interpretations and our setting does not allow us to discriminate among the different models of the effects of political parties on deficit, or even to rule out alternative hypotheses (e.g., see Pettersson Lidbom, 2012). We also show that cities that increase the municipal deficit after the relaxation of fiscal rules have an older population. These results may be consistent with the model of Song, Storesletten, and Zilibotti (2012), according to which young citizens have a disciplining role for fiscal policy because they internalize the future costs of present fiscal instability. Finally, we show that the increase in deficit arises only for mayors who are slower in providing public goods.⁷

Our results survive a large number of robustness checks. Among those, we use the introduction of the DSP for all municipalities in 1999 as a falsification test to show that our results are not driven by cities just below and just above 5,000 responding differently to the same set of fiscal rules. This test suggests that better paid (and, hence, better selected) mayors do not react differently to the introduction of the DSP compared to the other mayors. This is also reassuring for the external validity of our results. Additionally, we repeat this falsification exercise by interacting our treatment variable with the heterogeneity dimensions discussed above, in order to show that the law did not bind differently across those subsamples. We also show that there is no difference in manipulative sorting around 5,000 between the pre-treatment and the post-treatment period, and—last but not least—that municipalities just below and just above the threshold were on parallel trends in the pre-treatment period.

This paper relates to two strands of literature. First, we contribute to the literature that has analyzed the effectiveness of fiscal rules.⁸ Previous evidence primarily comes from

⁷Our results suggest that fiscal restraints on subnational governments may have the positive welfare benefits mentioned above, because they may bind more on municipalities characterized by higher political distortions, and limited welfare costs, because the tools for countercyclical fiscal policy are often administered at the country level (as discussed by Gavin and Perotti, 1997 and Hines, 2011). Thus, our heterogeneous treatment effects can offer a suggestive explanation for the empirical fact that fiscal rules are much more likely to be observed for local rather than national governments around the world, as documented by Glaeser (2013). However, the nature of our evidence does not allow us to draw a definite conclusions about the welfare effects of the intervention.

⁸For surveys, see Poterba and Von Hagen (1999) and and Wyplosz (2012). For an extensive review on

cross-country comparisons in specific regions, such as the European Union (see Hallerberg and Von Hagen, 1999; Debrun et al., 2008) or Latin America (see Alesina et al., 1996), and from local governments in a federal state, such as the U.S. (see Poterba, 1994; 1996).⁹ While some studies find that fiscal rules do indeed result in lower budget imbalances, others stress the reasons why they might not be effective (see Alesina and Perotti, 1999). We contribute to this literature by analyzing the effectiveness of fiscal restraints with a quasi-experimental design where we control for omitted factors that may affect previous results, such as the fact that more disciplined constituencies introduce tighter rules, or that (current and past) legal institutions are endogenous to cultural values.¹⁰

Secondly, we contribute to the large literature on the political economy of deficit determination, as we identify a set of politicians' and voters' characteristics associated with a larger deficit response when the rules are relaxed.¹¹ From a normative perspective, the optimality of fiscal rules is not obvious. Fiscal rules are not optimal in a friction-less world, but they might become optimal when deficits are the suboptimal result of the interplay between rational politicians, voters, and interest groups.¹²

The paper proceeds as follows. Section 2 describes the Italian institutions. Section 3 lays out our identification strategy. Section 4 describes the data. Section 5 discusses the empirical results. We conclude with Section 6.

the types of rules and the main empirical evaluations of their impact, see IMF (2009). Balassone, Franco, and Zotteri (2004) review the literature on subnational fiscal rules in the European Union. As we focus on local governments, our results are particularly relevant for the literature that has emphasized that the implementation of subnational fiscal rules faces serious commitment problems, in the form of future overhaul, soft budget constraints, and lack of enforcement: see, among others, Eichengreen and von Hagen (1996), Braun and Tommasi (2004), Sutherland, Price, and Jourard (2005), and Ter-Minassian (2007). Feld and Kirchgaessner (2008) discuss the effects of the Swiss debt brakes, a type of fiscal rule, on cantons' fiscal discipline.

⁹Studies on the U.S. also include Von Hagen (1991), Alt and Lowry (1994), Bayoumi and Eichengreen (1995), Bohn and Inman (1996), Alesina and Bayoumi (1996), Knight (2000), Auerbach (2006), Clemens (2012), and Clemens and Miran (2012).

¹⁰On the endogenous determination of laws, see Aghion, Alesina, and Trebbi (2004) and Givati and Troiano (2012). From a theoretical perspective, other authors analyze the welfare effect of fiscal restraints: Besley and Smart (2007) study limits on the size of government in a two-period agency model; Bassetto and Sargent (2006) study the welfare case for allowing the government to issue debt only to finance certain expenditures.

¹¹This literature has been reviewed by Alesina and Perotti (1999).

¹²This is consistent with the aforementioned Alesina and Tabellini (1990); Persson and Svensson (1989); Aghion and Bolton (1990); Besley (2007); Battaglini and Coate (2008); Song, Soresletten and Zilibotti (2012). Other political economy models on deficit determination include Tabellini and Alesina (1990), Lizzeri (1999), Besley (2007), Azzimonti, Battaglini, and Coate (2008), and Yared (2010).

2 Institutional framework

Fiscal rules can be applied either by national governments or by local governments. Both national and sub-national rules can be either self-imposed or imposed by an external authority. For instance, the European Stability Pact is imposed by the European Union to the members states. The fiscal rules imposed on U.S. states are instead self-imposed. There are three ways through which laws can achieve fiscal discipline: 1) delegation to an agent; 2) binding numerical rules; 3) improving budgetary process (Wyplosz, 2012). It appears that our results are more likely to generalize for numerical fiscal rules that are imposed by a national government on municipalities.

The Italian municipal government (*Comune*) is composed of a mayor (*Sindaco*), an executive committee (*Giunta*) appointed by the mayor, and an elected city council (*Consiglio Comunale*) that must endorse the annual budget proposed by the mayor. The mayor and the executive committee—whose members can be dismissed by the mayor at will—propose changes in fiscal policy, such as adjustments in the tax rates. Subsequently, the city council votes on the proposed changes. Since 1993, mayors have been directly elected (with single round plurality rule in cities below 15,000 inhabitants) and face a two-term limit. Municipalities manage about 10 percent of total public expenditure and are in charge of a wide range of services, including water supply, waste management, municipal police, infrastructures, welfare, and housing. Only about 20 percent of revenues are local revenues.

After the European Union adopted its Stability and Growth Pact in 1997, some European countries—including Italy—adopted subnational fiscal rules to keep local governments accountable. In December 1998, the Italian annual budget law (*Legge Finanziaria*) for 1999 introduced a set of rules that constrained all municipalities in terms of fiscal discipline, the aforementioned Domestic Stability Pact or DSP (*Patto di Stabilità Interno*).¹³

Municipal governments were constrained to keep the growth of their fiscal gap—defined as deficit, net of transfers and debt service—under tight control. The rationale for the exclusion of debt service and transfers in the definition of the DSP target is twofold. First, mayors are not held accountable for expenses on interest (which depend on previously contracted loans) and for revenues from transfers (which are not raised by the municipality). Second, these

¹³See Law 23 December 1998, no. 448, article 28.

two items are the tools that the central government uses to enforce fiscal rules, reducing interest payments for compliers and cutting transfers for non-compliers. The punishment established for not complying with the DSP included the following penalties: (i) 5 percent cut in the annual transfers from the central government; (ii) ban on municipal hires; (iii) 30 percent cut on reimbursement and non-absenteeism bonuses for the employees of the municipal administration. Cities complying with the DSP, instead, benefited from a reduction of the expenses on interests for loans from the central government.¹⁴

The exact DSP rule constraining the fiscal gap changed from one year to another, but over our sample period it consisted in imposing a cap on the growth rate of the gap. Table 1 summarizes the evolution of the DSP over our sample period. The cap varies between a minimum of zero (no growth allowed) and a maximum of 3 percent, the benchmark being the fiscal gap two years before the actual budget year (this means that, for instance, the growth rate in 2004 is calculated with respect to the fiscal gap in 2002). Therefore our estimates will refer to the effects of a fiscal rule that allows deficits to grow rather than to stand still.

In evaluating the impact of the DSP on fiscal discipline, we therefore focus on the pattern of both deficit and fiscal gap. Constrained and unconstrained municipalities can accumulate debt, but if they run into fiscal distress they need to go through a special procedure of budget consolidation (*Piano di Risanamento*). One possible concern can be that relaxing fiscal rules induces expectations in our treated cities that they will be bailed out in case of situations of fiscal distress.¹⁵ While we acknowledge the possibility that changes in fiscal restraints can always be confounded with changes in expectations, both legal and anecdotal evidence are consistent with the view that the Italian government made a substantial effort to keep expectations of bail outs as low as possible in the period of interest. In 2001, the Italian Constitution was revised to introduce a higher degree of fiscal decentralization while making bailouts unconstitutional.¹⁶

¹⁴In line with the law, we compute the fiscal gap with the formula: Fiscal Gap = (Total Expenditures - Debt Service) - (Total Revenues - Transfers). See the Appendix Table A1 for more details on the definition of policy outcomes. Unfortunately, the Ministry of the Interior does not release the list of municipalities that did not comply with the rule according to its records. As discussed in Section 5.1, we find suggestive evidence that the DSP penalties were to some extent enforced, as there is a correlation between non-compliance (as estimated in our data) and lower transfers (which are the main DSP enforcement mechanism).

¹⁵Italian cities can finance their debt through the emission of bonds (*Buoni Obbligazionari Comunali*) or with loans from a central administrative agency (*Cassa Depositi e Prestiti*) and from private banks.

¹⁶The new article 119 of the Italian Constitution specifically forbids the increase of governmental transfers to local governments in fiscal distress. Anecdotal evidence confirms a hard-line stance by the central govern-

After 2001, all municipalities below 5,000 inhabitants were exempted by the DSP.¹⁷ The motivation for this exemption was not made explicit by the central government, but it is probably linked to the goal of providing some relief to small municipalities in the presence of economies of scale in managing the municipal government.

Fiscal rules, however, are not the only policy varying with population size at 5,000. In particular, at this cutoff, there is a sharp increase in the wage received by the mayor and by the other members of the executive committee, based on a remuneration policy that has been in place since the early 1960s. Gagliarducci and Nannicini (2013) show that the wage increase at 5,000 attracts more educated individuals into politics and improves their performance once elected. Table 2 summarizes all the Italian policies on municipal governments relying on population thresholds over our sample period. Population size determines the size of the city council; the size of the executive committee; the electoral rule; and whether a municipality can have additional elective bodies at the neighborhood level. But only the DSP (after 2001) and the salary of local politicians display a discontinuity at the 5,000 threshold.

In 2002, regions with special autonomy (*Regioni a Statuto Speciale*) were allowed to set their own fiscal rules for municipal governments, and this is why we do not consider these regions in our study. Furthermore, since 2005 fiscal rules have been frequently changing from one year to another, shifting the population cutoff from 5,000 to 3,000 and back, and replacing the fiscal gap requirement with expenditure caps in some years. This is the reason why we focus our empirical evaluation on the period from 1997 to 2004.

In the next section, we explain how we exploit our setting to identify the effect of fiscal restraints on fiscal discipline.

ment toward indebted municipalities. For instance, Taranto, a medium sized Italian city, declared bankruptcy in 2006; local newspapers reporting on the fiscal situation of the city (e.g., see *Taranto Sera*) stressed how the city had to undertake a multi-year repayment plan, without any help from the central government, and, after six years, almost half of the debt was still outstanding; public services and wage of public employees were suspended for some months after the bankruptcy, and local tax rates were significantly raised.

¹⁷See Law 23 December 2000, no. 388, article 53.

3 Econometric framework

3.1 Setup

Based on the institutional framework discussed above, two treatments sharply change at the relevant threshold: the wage of the mayor (and of the executive officers) and fiscal rules. Define W_{it} as the first treatment for municipality i at time t , equal to one if the wage is low and equal to zero otherwise; also define R_{it} as the second treatment, equal to one if fiscal rules are relaxed and equal to zero if they are still binding. The wage policy is always in place over the sample period, while the relaxation of fiscal rules is introduced at time t_0 for municipalities with population size (P_{it}) below the threshold $P_c = 5,000$. Population size is measured by the last available Census (Gagliarducci and Nannicini, 2013; Calzolari et al. 2013). The assignment mechanism for both treatments can therefore be described as follows:

$$W_{it} = \begin{cases} 1 & \text{if } P_{it} < P_c \\ 0 & \text{otherwise,} \end{cases}$$

$$R_{it} = \begin{cases} 1 & \text{if } P_{it} < P_c \text{ and } t \geq t_0 \\ 0 & \text{otherwise.} \end{cases}$$

Define $Y_{it}(w, r)$ as the potential policy outcomes if $W_{it} = w$ and $R_{it} = r$, with $w = 0, 1$ and $r = 0, 1$. The observed outcome is therefore equal to: $Y_{it} = W_{it}R_{it}Y_{it}(1, 1) + W_{it}(1 - R_{it})Y_{it}(1, 0) + (1 - W_{it})R_{it}Y_{it}(0, 1) + (1 - W_{it})(1 - R_{it})Y_{it}(0, 0)$.

In this setting, we aim at identifying the causal effect of R_{it} on Y_{it} . Borrowing the notation from Hahn, Todd, and Van der Klaauw (2001), we define $Z^- \equiv \lim_{p \rightarrow P_c^-} E[Z_{it}|P_{it} = p, t \geq t_0]$ and $Z^+ \equiv \lim_{p \rightarrow P_c^+} E[Z_{it}|P_{it} = p, t \geq t_0]$, with $Z = Y, Y(1, 1), Y(1, 0), Y(0, 1), Y(0, 0)$. Hahn, Todd, and Van der Klaauw (2001) derive precise conditions under which the cross-sectional Regression Discontinuity (RD) estimator after t_0 , defined as $\hat{\tau}_{RD} \equiv Y^- - Y^+$, would identify the average treatment effect of R_{it} at the threshold—i.e., for $P_{it} = P_c$ —if fiscal rules were the only treatment sharply changing at P_c . In our setting, however, standard continuity conditions are not enough for identification, because of the confounding treatment W_{it} .

Even if we assume that all potential outcomes $E[Y_{it}(w, r)|P_{it} = p, t \geq t_0]$, with $w = 0, 1$ and $r = 0, 1$, are continuous in p at P_c , we have that:

$$\begin{aligned} \hat{\tau}_{RD} &\equiv Y^- - Y^+ = Y(1, 1)^- - Y(0, 0)^+ = [Y(1, 1)^- - Y(1, 0)^-] + [Y(1, 0)^+ - Y(0, 0)^+] = \\ &= E[Y(1, 1)_{it} - Y(1, 0)_{it}|P_{it} = P_c, t \geq t_0] + E[Y(1, 0)_{it} - Y(0, 0)_{it}|P_{it} = P_c, t \geq t_0], \end{aligned}$$

where the first term in the right-hand side captures one of the potential causal effects of interest (namely, the average treatment effect of relaxing fiscal rules in cities where mayors are poorly paid) and the second term captures a “selection bias” (namely, the average treatment effect of reducing mayors’ wage in cities where fiscal rules are binding).¹⁸ As a result, the cross-sectional RD estimator provides a biased estimate of the average treatment effect of relaxing fiscal rules in a neighborhood of the threshold, because the effects of the two (confounded) treatments cannot be disentangled between each other.

3.2 Identification and diagnostics

We now show how to overcome the identification problem discussed above. Information on the pre-treatment period ($t < t_0$) allows us to remove the selection bias under local assumptions. Analogously to the post-treatment period, for the pre-treatment period we define: $\tilde{Z}^- \equiv \lim_{p \rightarrow P_c^-} E[Z_{it} | P_{it} = p, t < t_0]$ and $\tilde{Z}^+ \equiv \lim_{p \rightarrow P_c^+} E[Z_{it} | P_{it} = p, t < t_0]$, with $Z = Y, Y(1, 1), Y(1, 0), Y(0, 1), Y(0, 0)$. To identify the causal effect of relaxing fiscal rules, we exploit both the discontinuous variation at P_c and the time variation after t_0 :

$$\hat{\tau}_{DD} \equiv (Y^- - Y^+) - (\tilde{Y}^- - \tilde{Y}^+).$$

We call $\hat{\tau}_{DD}$ “difference-in-discontinuities” estimator (shortly, “diff-in-disc”), because it rests on the intuition of combining a difference-in-differences strategy and an RD design.

Alternative approaches in the literature have exploited the longitudinal nature of the data in an RD framework, such as the fixed-effect RD estimator in Pettersson-Lidbom (2012), the first-difference RD estimator in Lemieux and Milligan (2008), or the dynamic RD design in Cellini, Ferreira, and Rothstein (2011). All of these estimators, however, are different from ours. In their setups, treatment assignment changes over time and identification rests on within-unit variation, while in our case identification rests on the difference between two cross-sectional estimators. We are aware that other empirical studies have already implemented what we call diff-in-disc design, but we now provide precise identification assumptions for this approach and propose diagnostics tools that directly stem from these assumptions.¹⁹

¹⁸Obviously, the fact that we refer to the second term as “selection bias” is just a matter of convention, as we are after the treatment effect of relaxing fiscal rules. As a matter of fact, both terms are average treatment effects of two (confounded) policies.

¹⁹For examples of diff-in-disc designs, see Lalive (2008), Campa (2011), Leonardi and Pica (2013) and

Assumption 1. All potential outcomes $E[Y_{it}(w, r)|P_{it} = p, t \geq t_0]$ and $E[Y_{it}(w, r)|P_{it} = p, t < t_0]$, with $w = 0, 1$ and $r = 0, 1$, are continuous in p at P_c .

Assumption 2. The effect of the confounding policy W_{it} at P_c in the case of no treatment ($R_{it} = 0$) is constant over time: $Y(1, 0) - Y(0, 0) = \tilde{Y}(1, 0) - \tilde{Y}(0, 0)$.²⁰

Assumption 2 requires the effect of the confounding policy discontinuity W_{it} at P_c not to vary with time. In other words, it requires observations just below and just above P_c to be on a (local) parallel trend in the absence of the new policy R_{it} . This is similar to the standard identifying assumption for difference-in-differences but is more local, as it must be met only in a neighborhood of the policy threshold.²¹ To indirectly test for this assumption, in Section 5, we estimate the pattern of the discontinuities in Y_{it} before t_0 and show that observations just below and just above P_c were not on differential trends before the policy shift. Another test to validate the plausibility of this assumption coincides with checking whether any manipulation of the running variable changes (or arises) over time.²²

It is easy to show that, under the above assumptions, the diff-in-disc estimator identifies the (local) causal effect of relaxing fiscal rules (R_{it}) in a neighborhood of the threshold ($P_{it} = P_c$) and for cities where politicians' wage is low ($W_{it} = 1$).

Proposition 1. Under Assumption 1 and Assumption 2, the diff-in-disc estimator $\hat{\tau}_{DD}$ identifies the average treatment effect: $E[Y_{it}(1, 1) - Y_{it}(1, 0)|P_{it} = P_c]$.

Proof. $\hat{\tau}_{DD} \equiv (Y^- - Y^+) - (\tilde{Y}^- - \tilde{Y}^+) = [Y(1, 1)^- - Y(0, 0)^+] - [\tilde{Y}(1, 0)^- - \tilde{Y}(0, 0)^+] = Y(1, 1) - Y(0, 0) - Y(1, 0) + Y(0, 0) = Y(1, 1) - Y(1, 0) = E[Y_{it}(1, 1) - Y_{it}(1, 0)|P_{it} = P_c]$. \square

Casas-Arce and Saiz (2015). Our econometric strategy also relates to evaluation designs that exploit the comparison between different discontinuities across space, such as in different U.S. states (see Dickert-Conlin and Elder, 2010) or for politicians facing different term limits (see Gagliarducci and Nannicini, 2013).

²⁰Note that, because of Assumption 1, we can now write: $Z^+ = Z^- \equiv Z$ and $\tilde{Z}^+ = \tilde{Z}^- \equiv \tilde{Z}$, with $Z = Y, Y(1, 1), Y(1, 0), Y(0, 1), Y(0, 0)$.

²¹Indeed, in our empirical setting, the difference-in-differences assumption of parallel trend in the all sample is unlikely to be satisfied (see the evidence discussed in the next section).

²²Specifically, in Section 5, we extend the cross-sectional test of continuity of the density at P_c (see McCrary, 2008) to test for the continuity of the *difference* in the densities before and after t_0 . We also implement diff-in-disc estimations with time-invariant characteristics as outcomes, so as to indirectly test for changes in the pattern of manipulative sorting. As a further check in this direction, we include time-invariant characteristics and year fixed effects as covariates in the baseline diff-in-disc estimations; in the absence of manipulative sorting, point estimates are expected to remain similar and accuracy to increase.

This result allows us to identify a causal effect of the treatment of interest under plausible conditions. Yet, the estimand only refers to cities with poorly paid mayors (that is, to cities that also receive the confounding treatment). To identify a more general estimand with the diff-in-disc estimator, we need to make a further assumption.

Assumption 3. *The effect of the treatment R_{it} at P_c does not depend on the confounding policy W_{it} : $Y(1, 1) - Y(1, 0) = Y(0, 1) - Y(0, 0) \equiv Y(1) - Y(0)$.*

It is straightforward to extend the result in Proposition 1 and show that, under the above assumption, the diff-in-disc estimator identifies the (local) causal effect of relaxing fiscal rules in a neighborhood of the threshold, that is, the standard estimand in RD designs: $E[Y_{it}(1, 1) - Y_{it}(1, 0)|P = P_c] = E[Y_{it}(0, 1) - Y_{it}(0, 0)|P = P_c] \equiv E[Y_{it}(1) - Y_{it}(0)|P = P_c]$.

This third (homogeneity) assumption states that there must be no interaction between the treatment and the confounding policy. In our institutional setting, this assumption would be violated if mayors just below and just above P_c , who are paid differently, reacted to the relaxation of fiscal rules in different ways. In Section 5, under the maintained hypothesis that Assumption 2 holds, we directly test Assumption 3 exploiting the introduction of fiscal rules for all municipalities in 1999. In fact, if Assumption 3 were satisfied, a falsification test implementing the diff-in-disc estimator in 1999 would deliver a zero effect.

Finally, note that—based on the institutions described in the previous section—our diff-in-disc design can only identify the effect of relaxing fiscal rules for small Italian municipalities. Therefore, interpreting our estimates as the effect of imposing fiscal rules in the same setting would require an additional symmetry assumption.

3.3 Estimation

The diff-in-disc estimator can be implemented by estimating the boundary points of four regression functions of Y_{it} on P_{it} : two on both sides of P_c , both before and after t_0 . We apply a local linear regression, following Gelman and Imbens (2014).²³ The method consists in fitting linear regression functions to the observations distributed within a distance h on either side of P_c , both before and after t_0 . Formally, we restrict the sample to cities in the

²³See also Imbens and Lemieux (2008), Van der Klaauw (2008), and Lee and Lemieux (2010).

interval $P_{it} \in [P_c - h, P_c + h]$ and estimate the model:

$$Y_{it} = \delta_0 + \delta_1 P_{it}^* + S_i(\gamma_0 + \gamma_1 P_{it}^*) + T_t[\alpha_0 + \alpha_1 P_{it}^* + S_i(\beta_0 + \beta_1 P_{it}^*)] + \xi_{it}, \quad (1)$$

where S_i is a dummy for cities below 5,000 capturing treatment status, T_t an indicator for the post-treatment period, and $P_{it}^* = P_{it} - P_c$ the normalized population size. Standard errors are clustered at the city level. The coefficient β_0 is the diff-in-disc estimator and identifies the treatment effect of relaxing fiscal rules, as the treatment is $R_{it} = S_i \cdot T_t$. We present the robustness of our results to multiple bandwidths h , optimally computed first following the algorithm developed by Calonico, Cattaneo, and Titiunik (2013a, 2013b), and then implementing the cross-validation method proposed by Ludwig and Miller (2007).²⁴

4 Data

We use administrative data from the Italian Ministry of the Interior (*Ministero dell'Interno*) containing information at the municipality level on the universe of municipal financial reports, municipal tax rates, electoral outcomes, and individual characteristics of the mayor. Based on the local nature of our diff-in-disc design, we restrict the sample to Italian municipalities between 3,500 and 7,000 inhabitants.²⁵ For the reason discussed in Section 2, we drop municipalities in regions with special autonomy. This leaves us with a final sample of 1,050 municipalities for a total of 6,300 observations from 1999 to 2004. Among them, 555 municipalities are treated after 2001 and 495 are in the control group. Our sample contains about 13 percent of all Italian municipalities and about 8 percent of the national population.

The population size comes either from the 1991 or from the 2001 Census. Because the relaxation of the DSP was decided in December 2000, it is very unlikely that municipalities

²⁴In a previous working-paper version of the paper (Grembi, Nannicini, and Troiano, 2012), we show that our estimates are robust if we adopt a spline polynomial approximation. That method uses all observations and chooses a flexible functional form to fit the relationship between Y_{it} and P_{it} on either side of P_c , both before and after t_0 :

$$Y_{it} = \sum_{k=0}^q (\delta_k P_{it}^{*k}) + S_i \sum_{k=0}^q (\gamma_k P_{it}^{*k}) + T_t \left[\sum_{k=0}^q (\alpha_k P_{it}^{*k}) + S_i \sum_{k=0}^q (\beta_k P_{it}^{*k}) \right] + \xi_{it}, \quad (2)$$

where β_0 is again the diff-in-disc estimator identifying the treatment effect of relaxing fiscal rules.

²⁵We restrict the sample to the interval 3,500–7,000 to stay relatively far from the 3,000 threshold, where other policies change (see Table 2), and to balance the sample size on either side of the 5,000 threshold. All the results are robust to this interval choice, i.e., they are virtually unchanged for alternative choices, such as 3,250–6,750; 3,000–7,000; 3,500–6,500; 4,000–6,000; and 3,500–7,500.

had the time to influence their Census population and sort below the 5,000 threshold, and it is also unlikely that elected officials wanted to do that at the price of cutting their wage. In Section 5.2, we formally test for manipulative sorting below 5,000 before/after 2001 by comparing population size in the 1991 and 2001 Census.

The main variables of interest are the municipal financial report's categories. To measure fiscal discipline, we evaluate the deficit (total expenditures minus total revenues) and the fiscal gap (total expenditures minus total revenues, net of transfers and debt service), which is the target of the DSP. We divide expenditures into current outlays (including personnel expenditure), capital outlays (mostly investments), and debt service; and we divide revenues into municipal taxes, fees and tariffs, transfers from the central government, and other revenues. The main tax instruments decided by municipal governments are the real estate tax rate on home property (ICI), providing about 50 percent of their tax revenues, and the municipal surcharge on the personal income tax (IRPEF), amounting to about 10 percent of tax revenues.²⁶ See the Appendix Table A1 for precise definitions and data sources of all variables from the municipal financial reports.

One possible concern in evaluating the reaction of policies and tax instruments to fiscal rules might be that mayors have very little autonomy in adjusting local revenues or expenditure, but this is not the case for Italian municipalities. On the revenues side, over our sample period, mayors could vary ICI within a bracket from 0.4 to 0.7 percent of the legal home value, and the IRPEF surcharge within a bracket from 0 to 0.5 percent of taxable income.²⁷ And they were also free to set other local taxes (such as those on building rights or the occupation of public areas) or fees and tariffs for the services they provided (such as waste management or child care). Additionally, Italian towns are characterized by a sizable level of tax evasion, which the mayor can decide to fight.²⁸

On the expenditure side, municipalities also have room for adjustment because about one third of expenditures are classified as not rigid (that is, not attributable to payroll expenses

²⁶Bordignon, Nannicini, and Tabellini (2013) also use ICI as the main policy tool of Italian municipalities.

²⁷One additional concern can be that mayors comply with the rule by simply manipulating legal home value. However, legal home value is not determined or updated by mayors, as indicated by the *DPR* 22 December 1986, no. 917. Only in 2005, not in our sample, the Law 23 December 2005, no. 266 gave to municipalities some weak power of requesting the update of the assessed value of the real estate tax base.

²⁸Casaburi and Troiano (2015) find that in 2007 over 2 million Italian buildings were not registered in the cadastral maps and thus were not part of the tax base for real estate and income tax.

and debt service). For instance, one way to reduce expenditures without affecting the level of services is outsourcing (e.g., child care provided by private firms with more labor flexibility and lower costs although the financing remains public). Furthermore, Bandiera, Prat, and Valletti (2009) show how similar Italian municipalities can pay very differently for similar goods, and they interpret this as evidence of passive waste. This implies that, even if all current expenditures were rigid (and this is certainly not the case), mayors would still have the ability to reduce passive waste in order to adjust the fiscal gap.

Our dataset also contains time-invariant information on each municipality (geographic location, area size in km², sea level in meters), as well as time-varying information on the elected mayor (age, years of schooling, tenure in office, term limit), on the socio-economic environment (taxable income of resident inhabitants, age structure of the population), and on the political environment (number of political parties in the city council).

Table 3 provides descriptive statistics on the main outcome variables (policy outcomes and tax instruments) for cities below and above 5,000 inhabitants. All variables are per capita and expressed in real terms (with 2009 as base year); tax rates are in percentage points. Municipalities below (above) 5,000 manage an annual budget equal to almost 1,041 (943) Euros per capita in terms of expenditures, and the deficit amounts to about 15 (11) Euros. Taxes are only slightly lower than 20 percent of total revenues and higher in municipalities above 5,000. The main tax rates on ICI and the IRPEF surcharge, however, are fairly similar for municipalities in the two groups. Please note that transfers amount to about 200 euro per capita, which is close to the difference between deficit and fiscal gap.

As a benchmark, note that applying a difference-in-differences strategy to our dataset delivers the expected result: relaxing fiscal rules increases the deficit by 6.276 Euros per capita and the fiscal gap by 48.278 Euros per capita in a specification without municipality fixed effects, and by 5.279 and 16.669 with fixed effects, where both estimates on deficit are statistically significant at a 5 percent level and those on the fiscal gap at a 1 percent level (see Table A2). Those coefficients should be interpreted with caution, because their identification relies on assuming that small cities are a good counterfactual for larger cities. This is a strong assumption, which is violated in our setting because population affects the trends, and not only the levels, of public policies. In Appendix Figure A1 we show that in a difference-in-differences design the parallel pre-trends assumption is violated for four of our

budget items (capital expenditures, taxes, other revenues, and fees and transfers).

In the next section, we discuss the results of our diff-in-disc design.

5 Empirical results

5.1 Effect of relaxing fiscal rules on policy outcomes

Table 4 contains the main (diff-in-disc) estimation results. The main outcomes of interest are the two measures of fiscal discipline: deficit and fiscal gap. While the latter is the main target of the DSP, we believe that the former should be the real variable of policy interest. For each outcome variable, we present our baseline local linear regression estimates as in equation (1), with two different types of optimal bandwidth.²⁹

The impact of relaxing rules on the deficit is positive and significant both in statistical and in economic terms. The DSP relaxation increases the deficit by about 20 Euros per capita with respect to a baseline situation of balanced budget. The deficit created by the relaxation of the DSP is also substantial from an economic point of view, as it amounts to about 2 percent of total expenditures. This effect is driven by a higher fiscal gap of about 30 percent. Both these effects are statistically significant at standard levels in all specifications, while the point estimates seem to depend from the selected bandwidth.

These estimation results on fiscal discipline are consistent with the descriptive graphs shown in Figure 1 where in the top graphs we draw scatters and polynomial fits of the differences between each post-2001 outcome value and each pre-2001 value. These graphs allow us to see whether those differences exhibit a discontinuity at the 5,000 threshold. We see that both variables measuring fiscal discipline exhibit a sharp jump when moving from the left to the right of the threshold in the whole sample. Furthermore, in the middle graphs, we shed some light on the timing of the effect to provide evidence that high and low paid mayors were on parallel trends around the neighborhood of the 5,000 threshold.³⁰ The evidence is

²⁹Optimal bandwidths are calculated as either in Calonico, Cattaneo, and Titiunik (2013a, 2013b) or in Ludwig and Miller (2007). Results are robust to the use of predetermined bandwidths (i.e., 250, 500, 750, and 1,000) or spline polynomial with different orders (i.e., 2nd and 5th). In a previous version of the paper, Grembi, Nannicini and Troiano (2012), we presented the results for the spline 3rd and 4th-order polynomials.

³⁰The pre-existing discontinuities are consistent with the results of Gagliarducci and Nannicini (2013), who find that low paid mayors are more likely to engage in redistribution, which appears to be financed with both higher deficits and attracting more transfers.

consistent for both deficit and fiscal gap, as there is a change in the slope of the coefficients only after 2001. Most importantly, the cross-sectional RD estimates in 1999 and 2000 show that cities just below and just above 5,000 were on parallel trends before the policy shift. This robustness check also indirectly suggests that our policy was not anticipated in previous years.

It should be noted that the magnitude of our effects is sensitive to the bandwidth chosen, as can be seen in the two set of graphs plotted at the bottom of the Figure 1.

One of the advantages of our setting is the availability of homogeneous financial reports about the policies the Italian municipalities, and the availability of administrative data about tax rates. In the last three columns of Panel A, Table 4, we begin investigating the composition of the fiscal adjustment and we consider the expenditures side. We find that the coefficient on the expenditures variables are not statistically different from zero, although the large standard errors dont allow drawing a definite conclusion. However, it is re-assuring to note that the graphical evidence in Figure 2 suggests that the large standard errors may be due to outliers, and that no sizable discontinuities are detected in the expenditures outcomes via visual inspection.

In Panel B, we find that tax revenues are lower by about 20 to 45 percent in unconstrained municipalities. Lower tax revenues are the result of lower tax rates decided by the municipal government (see panel B of Table 4). Cities for which fiscal rules are relaxed have a 14 percent lower real estate tax rate and a 30 percent lower income tax surcharge. Other revenues do not seem to be affected by the relaxation of fiscal restraints.³¹ In Figure 3, we confirm that the (local) parallel trend assumption is also satisfied for all our other financial report's items.³²

Also on the side of revenues, central transfers seem to be higher for unconstrained municipalities, although point estimates are not statistically significant. The large standard errors do not allow to draw a definitive conclusion about the effect of relaxing the restraints on transfers. However, even if transfers increased as a result of the relaxation of the restraint,

³¹Other revenues include transfers from the European Union, other transfers, mortgages from administrative agencies, revenues coming from private properties owned by the municipality. Even if the standard errors for other revenues are bigger than the rest of our variables, visual inspection of the corresponding graph in Figure 2 reveals that standard errors are driven up by an outlier in this category. Repeating our analysis without this outlier consistently reduces the standard errors without affecting the other outcomes.

³²We also investigate how the relaxation of the restraint affects total revenues and total expenditures. We dont detect a statistically significant effect on total revenues and total expenditures.

that result would not be able to explain the above impact of relaxing fiscal rules on fiscal discipline, because it would go in the opposite direction (that is, local governments running higher deficits receive larger transfers), and it would be consistent with the design of the law, which allows the central government to cut transfers as an enforcement mechanism. This conjecture is consistent with our data. Although the Italian government did not release the official list of complying and non-complying municipalities, we can estimate compliance status in every year by applying the official rule summarized in Table 1 to our data. We find that complying municipalities amount to 68 percent of the total, and non-complying municipalities are also present around the 5,000 threshold, where the estimated compliance status shows a sharp discontinuity of about 40 percent.³³ Future transfers appear to be strongly correlated with compliance status: in a specification that controls for municipality and year fixed effects, central transfers are larger by about 10.329 Euros per capita (standard error, 3.303) for complying municipalities. This evidence is consistent with the institutional details discussed in Section 2, according to which central transfers are used as the main enforcement device of the DSP. Consistent with the estimation results, tax revenues, ICI, and IRPEF show significant and negative jumps moving from just above to just below the 5,000 residents threshold.

5.2 Validity tests

As discussed in Section 3, the above estimation results rest on Assumption 1 and Assumption 2 for the identification of different average treatment effects in the neighborhood of the population threshold. In this section, we indirectly evaluate Assumption 1 by means of testing procedures aimed at detecting changes in manipulative sorting before/after 2001, and we directly test Assumption 2 in a falsification test that uses pre-treatment data.

In Appendix Figure A2 we test the null hypothesis of continuity of the *difference* in the density at 5,000 between the 1991 and the 2001 Census (top graph), by drawing both scatters and (3rd-order) polynomial fits. If mayors were able to manipulate population size and sort below the threshold to avoid fiscal rules, our estimates would still suffer from the selection bias that was common in the previous empirical literature. However, in principle, there is

³³Specifically, if we repeat our RD estimations using compliance status as a dependent variable, we obtain the following results for the local linear regression and the spline polynomial approximation specifications, respectively: 0.450 (standard error, 0.070); 0.443 (0.054); 0.448 (0.076); 0.436 (0.096).

very little room for differential manipulation between the two Censuses, because (i) the DSP is only enacted in December 2000, (ii) the Census is run independently by the National Statistical Office, so that false reporting should be ruled out, and (iii) mayors willing to sort below 5,000 to enjoy a relaxation of fiscal rules would pay the price of cutting their wage. Nevertheless, it might still be the case that some municipalities under financial stress tried to sort below 5,000 moving from the 1991 to the 2001 Census, by forcing some residents to leave or (more plausibly) not counter-reacting to population drops. Yet, the top graph in Figure A1 is reassuring about the absence of manipulation, as there is no jump in the difference between the two densities. The point estimate from the spline polynomial approximation is equal to -0.078 (standard error, 0.114) and therefore is not statistically different from zero. For the sake of completeness, we also report the cross-sectional density tests for 1991 (bottom left) and 2001 (bottom right). Also there, there is no evidence of manipulation.³⁴

Furthermore, in the Appendix Table A3, we check for the balancing of time-invariant characteristics by including covariates, together with year fixed effects, in the baseline diff-in-disc estimations; as expected, point estimates remain almost unchanged and accuracy increases. The Appendix Table A4 further evaluates the absence of manipulation. We implement diff-in-disc estimations with time-invariant characteristics (geographic location, area size, and sea level) as outcome variables, but we use changing population numbers: the 1991 Census before the treatment year, and the 2001 Census afterwards. This is meant to assess whether the fraction of cities with certain fixed characteristics just below or above 5,000 varies from 1991 to 2001. No time-invariant characteristics display a statistically significant jump. We think that geographical location is a particularly interesting dimension here, because Italian geography is correlated with economic development, crime rates and shirking (e.g., see Ichino and Maggi, 2000; Nannicini et al., 2013; Casaburi and Troiano, 2015), and it could thus be associated with opportunistic manipulation too.

Based on this large amount of supporting evidence on Assumption 1, in Appendix Table A5 we directly test Assumption 2 under the maintained hypothesis that Assumption 1 holds. In particular, we check whether cities just below or just above the 5,000 threshold respond differently to fiscal rules. We use the introduction of the DSP in 1999 for *all* municipalities as an experiment to test for the absence of any differential response around 5,000. Specifically,

³⁴The 1991 point estimate is 0.068 (0.082); the 2001 point estimate is -0.010 (0.076).

we implement diff-in-disc estimations in the interval 1997–2000, using 1999–2000 as the post-treatment period and 1997–1998 as the pre-treatment period. All outcome variables are perfectly balanced around the threshold before/after 1999, confirming the assumption that the DSP did not interact with the confounding wage discontinuity and did not bind differently across different sides of the population threshold.³⁵

In Appendix Figure A3 we test the sensitivity of the estimates to the bandwidth for the other budget items.

We also perform a set of placebo tests to evaluate the possibility that our results arise from random chance rather than a causal relationship. In the Appendix Figures A4 and A5, in the spirit of DellaVigna and La Ferrara (2012), we implement—respectively for deficit and for fiscal gap—a set of diff-in-disc estimations at false population thresholds below and above 5,000 (namely, any point from 4,900 to 4,400 and from 5,100 to 5,600 in order to stay sufficiently away from the true policy threshold). At these false thresholds, we expect to find no systematic evidence of treatment effects similar to our baseline results. The two figures report the cumulative density function of these 1,000 placebo point estimates (using a specification with 3rd-order spline polynomial), normalized with respect to our baseline point estimates for deficit and fiscal gap. This means, for instance, that a normalized coefficient of 80 stands for a placebo point estimate equal to 80 percent of the true baseline estimate at 5,000. The intuition here is that we should not observe too many normalized coefficients outside the interval from -100 to +100. Indeed, all of the placebo coefficients are below our estimated coefficients for both deficit and fiscal gap, and the cumulative density function of the normalized coefficients is much steeper around zero. Only 0.8 percent of the normalized placebo coefficients for the deficit are bigger than the true coefficient in absolute value, while none of them is so for the fiscal gap. On the whole, these placebo tests provide strong support for the robustness of our main results on fiscal discipline.

In Appendix Table A7 we report that the effect are qualitatively similar when we drop years 2001 and 2002 (the years where every municipality faced the restraint) from the estimation. Finally, we show in the Online Appendix Table A8 that the results are qualitatively identical when dropping 1999 and 2000 (the years where no municipality faced a fiscal re-

³⁵The city of Romentino was an outlier due to a lucrative sale of land in 1998 and it was removed from the sample. Our results do not change with the inclusion of this city, with the exception of bigger standard errors for other revenues.

straint) from the estimations. The results in the previous Tables suggest that the exact formulation of the restraint is not driving our main results, and this is encouraging for the external validity of our estimates.

5.3 Political economy of fiscal adjustment

In this section, we exploit our research design to shed light on the political economy of the deficit. Evaluating the differential response of different politicians and voters to an exogenous (albeit local) variation in fiscal rules can identify important determinants of politically motivated deficits, and it provides new evidence about the costs and benefits of fiscal restraints. We start by looking at three political factors. First, we consider whether mayors face a binding term limit or not, because mayors in their second term have no reelection incentives and no personal stake in the city’s budget for the following years. Second, we consider the number of parties in the city council—which, hence, vote on the budget proposed by the mayor—to capture political fragmentation and potential common pool problems. Third, we consider the age profile of citizens in our municipalities. We finally relate our findings to models that formalize the trade-off between reduced flexibility of fiscal policy and increased discipline on politically motivated deficit. Specifically, we consider the speed of public good provision (the ratio between provided public goods and the promised public goods promised to the voters in the provisional budget).

The results are reported in Table 5, where we implement the baseline diff-in-disc estimations interacting our treatment with: (i) binding vs. non-binding term limit; (ii) the number of parties in the city council; (iii) the fraction of inhabitants belonging to the youngest cohort; (iv) the speed of public good provision. For each heterogeneity exercise, we report the diff-in-disc estimates of the relevant interaction. We are aware that the causal interpretation of the relevant interaction rests on an additional conditional independence assumption. This is why we report a second interaction coefficient (with covariates) indicating whether this difference is robust to a specification including a full set of interactions with covariates at the municipality level (namely, the average taxable income; mayor’s years of schooling; and whether the municipality is in the north of the country). If this test is also statistically significant, it means that the differential impact of relaxing fiscal rules across our heterogeneity

dimensions is not driven by those observable confounding city characteristics.³⁶

First, we focus on term limits, exploiting the fact that Italian mayors face a two-term limit.³⁷ Theoretical models suggest that the expectation of a future election can affect policies because politicians who plan to run again for office must please the voters sufficiently often to merit reelection (Barro, 1973; Banks and Sundaram, 1998). We find that the fiscal (de)stabilization induced by the relaxation of the fiscal restraints is driven by mayors without a binding term limit, although this result becomes borderline insignificant in some specifications that control for covariates. As mayors without term limits face both stronger reelection concerns and a higher expected probability that they (or their party) will remain in power, the above result provides more support for models linking deficits to reelection incentives (see Aghion and Bolton, 1990) or to politicians' pandering to voters (see Maskin and Tirole, 2004), rather than models viewing deficits as a way to tie the hands of future governments with different political preferences (see Alesina and Tabellini, 1990; Persson and Svensson, 1989; Tabellini and Alesina, 1990). Unfortunately, we are not able to provide further empirical evidence on strategic voting models because of the lack of a clear expected reelection probability outcome in our data.³⁸ We are also not able to rule out alternative channels that can rationalize our result on term limits, such as the possibility that political experience per se has an effect on how mayors react to the relaxation of fiscal rules, though it is encouraging that some of the results survive to controlling for the mayor's characteristics.³⁹

Second, we focus on political fragmentation. Political fragmentation generally arises when several agents have an active role in the allocation of the budget, each with its own constituency to please, and each with some weight in the final decision. There are two key determinants that affect how much a policy maker internalizes the costs of the demanded

³⁶As a final robustness check on our heterogeneity analysis, we repeat the falsification test in 1999 for all the above dimensions. Specifically, in the Appendix Table A6 we implement the above heterogeneity diff-in-disc estimations in the interval 1997–2000, using 1999–2000 as the post-treatment period and 1997–1998 as the pre-treatment period. The fact that no effect and no difference are ever statistically significant means that municipalities around the threshold in different heterogeneity subsamples are not on differential trends before 2001. In other words, the DSP did not bind differently across those subsamples.

³⁷It should be noted that: (i) municipalities do not vote at the same time, and (ii) the DSP was independent of local politics because it followed agreements between the European Union and its member countries.

³⁸See Pettersson-Lidbom (2001) for an empirical evaluation of strategic voting models.

³⁹Given that we can control for the selection of mayors (years of schooling), our findings provide additional support to the literature that focuses on the effect of term limit on political accountability and in-office performance (see Besley and Case, 1995; List and Sturm, 2006).

share of the budget: the number of decision makers participating in the bargaining process and the institutional rules determining the aggregation of preferences. Most empirical studies focus on the first determinant because of a lack of reliable proxies for the rules that determine the budget allocation across countries. We also follow this previous literature by focusing on the first determinant. However, one advantage of our setting is that we can safely assume that the rules that determine the allocation of the budget are constant around our threshold. Our proxy for political fragmentation is the number of parties in the city councils. The majority of the municipalities in our sample have either one, or two, or three parties represented in the city council. Typically, there is at least one party in charge of the municipal government, and one party in the opposition. The estimation results reported in Table 5 show that the increase in deficit is stronger the higher is the number of parties in the city council. Our favorite interpretation of this result is that is consistent with models that explain fiscal instability in terms of political fragmentation or dynamic common pool (see Persson and Tabellini, 2000). However, this may not be the only interpretation of how political fragmentation affects fiscal instability. For instance, other existing models predict a negative relationships between the number of parties and fiscal discipline (Pettersson-Lidbom, 2012; Hargaden, 2015). Because of the nature of our setting and our evidence, we do not aim at discriminating among the different models of how parties affect deficit.

Consistent with the model of Song, Storesletten, and Zilibotti (2012), the deficit increases after the relaxation of the rule in cities with a smaller proportion of young citizens. Song, Storesletten, and Zilibotti (2012) propose a dynamic politico-economic theory of fiscal policy for small open economies, and we view this model as particularly relevant for our setting because small cities are a reasonably good approximation of small open economies. The main intuition of their model is that younger citizens impose a disciplining effect on fiscal policy, because they internalize the future costs of a presently loose fiscal policy. Both of the above predictions are borne out by our empirical findings.⁴⁰

Finally, we check whether our treatment interacts with the speed of public good provision: the ratio between the public goods actually delivered and the public goods promised to the

⁴⁰Another testable prediction of their model is that deficit should be higher for cities where the mayor is affiliated with right-wing parties. While most of the mayors in our sample are not affiliated with parties that can be clearly mapped to the ideological spectrum, we also find evidence that is consistent with this prediction in the (small) subset of mayors affiliated to a political party.

voters in the budget. Our indicator of the speed of public good provision is calculated as a mayor-specific measure, averaged across all the years each mayor is in office.⁴¹ These results show that the increase in deficit arises only for mayors that systematically under-provide the public goods promised to voters in the provisional budget. This evidence could be interpreted as consistent with a potential negative effect for voters following the relaxation of the rule, only to the extent to which politicians who consistently over-promise public goods are those who care more about reelection rather than social welfare (Besley, 2007). However, we can not rule out that mayors who are slower in providing public goods provide goods of better quality, and, hence, the previous result should be interpreted with caution.

All in all, the results discussed in this section suggest that fiscal restraints are more likely to bind for cities characterized by political failures.

6 Conclusion

Limiting the increase of public debt is a key policy issue in most economies. Fiscal rules are usually considered one of the potential solutions to public debt growth. In this paper we rely on a novel quasi-experimental design to show that fiscal rules enforced by a national government can be effective in causing a reduction of the accumulation of debt by local governments. Additionally, we are able to investigate the composition of fiscal adjustment and we show that unconstrained cities have lower tax rates and lower revenues following the relaxation of fiscal rules. We then link our results to existing theories of fiscal adjustment to provide new evidence about the costs and benefits of restraining fiscal policy. We show that deficit arises only where many parties are represented in the city council, mayors can run for reelection, there is a smaller proportion of young citizens, and mayors systematically underprovide the promised public good. These results suggest that fiscal restraints can be more effective when political distortions are larger.

We are aware that the enhanced internal validity of our evaluation design comes at the price of lower external validity, as is always the case in (local) econometric strategies based on policy discontinuities. However, our falsification test shows that mayors who are selected through a different mechanism—that is, a different salary—react in the same way to the

⁴¹Rogoff (1990) argues that electoral incentives might distort fiscal policy because of the distorted incentives to over-provide public goods when it is more salient for voters.

introduction of fiscal rules. This suggests that our results can potentially apply to different institutional settings.

Our results raise a number of questions for further research. First, we show that fiscal rules, when accompanied by a proper enforcement mechanism, can be effective also in regulatory environments characterized by serious commitment issues such as the Italian case. Hence, fiscal rules might be useful in far more cases than those suggested by the conventional wisdom, and the optimal design of fiscal rules should take into account political incentives in the enforcement of the rules. Second, our results on the composition of fiscal adjustment suggest that stabilizing fiscal policy through revenues and through expenditures might not be politically equivalent, although the standard errors don't allow drawing a strong conclusion. With this last caveat in mind, in our setting, politicians seem to be more prone to raising taxes rather than cutting expenditures to comply with an exogenous incentive for fiscal stability. Alesina and Ardagna (2010) raise the point that expenditure reductions are usually more expansionary than tax increases, regardless of the existence of a fiscal rule. Future research could explore the hypothesis that fiscal rules targeting expenditures may improve welfare compared to rules targeting deficit. Third, little is known about the political incentives that drive the choice between cutting expenditures and raising taxes to achieve stabilization. A rapidly growing literature in public economics have shown how the salience of tax changes affects behavioral responses (see Chetty, Looney and Kroft, 2009). It is an exciting direction for future research to investigate whether public good provision is subject to similar issues, and whether policy makers can exploit voters' behavioral biases in their favor.⁴²

Our last set of empirical results implies that political incentives drive local government responses to exogenously imposed fiscal restraints. Since restricting tax smoothing is the main welfare cost of fiscal restraints identified by the macroeconomic literature, and since mechanisms for smoothing business cycle fluctuations, such as unemployment insurance, are often administered at the national level (as discussed by Gavin and Perotti, 1997 and Hines, 2011), our results suggest that fiscal rules imposed on subnational governments might have limited welfare costs and significant benefits.

⁴²A first attempt along these lines is represented by Bisin, Lizzeri, and Yariv (2011).

References

- Aghion, P., Alesina, A., and F. Trebbi (2004): “Endogenous Political Institutions,” *Quarterly Journal of Economics*, 119, 565–612.
- Aghion, P., and P. Bolton (1990): “Government Domestic Debt and the Risk of Default: a Political–Economic model of the Strategic Role of Debt,” in R. Dornbusch and M. Draghi (eds.), *Public Debt Management: Theory and History*, Cambridge, UK: Cambridge University Press.
- Alesina A. and S. Ardagna (2010): “Large Changes in Fiscal Policy: Taxes versus Spending,” *Tax Policy and the Economy*
- Alesina, A., and T. Bayoumi (1996): “The Costs and Benefits of Fiscal Rules: Evidence from U.S. States,” NBER Working Paper 5614.
- Alesina, A., and R. Perotti (1996): “Fiscal Discipline and the Budget Process,” *American Economic Review Papers and Proceedings*, 86, 401–407.
- Alesina, A., and R. Perotti (1999): “Budget Deficits and Budget Institutions,” in J. Poterba and J. Von Hagen (eds.), *Fiscal Institutions and Fiscal Performance*, Chicago, IL: University of Chicago Press.
- Alesina, A., and G. Tabellini (1990): “A Positive Theory of Fiscal Deficits and Government Debt,” *Review of Economic Studies*, 57, 403–414.
- Alesina, A., Hausmann, R., Hommes, R., and E. Stein (1999): “Budget Institutions and Fiscal Performance in Latin America,” *Journal of Development Economics*, 59, 253–273.
- Alt, J., and R. Lowry (1994): “Divided Government, Fiscal Institutions, and Budget Deficits: Evidence from the States,” *American Political Science Review*, 88, 811–828.
- Auerbach, A. (2006): “Budget Windows, Sunsets, and Fiscal Control,” *Journal of Public Economics*, 90, 87–100.
- Azzimonti, M., Battaglini, M., and S. Coate (2008): “Analyzing the Case for a Balanced Budget Amendment to the U.S. Constitution,” mimeo.
- Balassone, F., Franco, D., and S. Zotteri (2004): “Fiscal Rules for Sub-national Governments: Lessons from EMU Countries,” in G. Kopits (ed.), *Rules-Based Fiscal Policy in Emerging Markets: Background, Analysis and Prospects*, Palgrave Macmillan.

- Bandiera, O., Prat, A., and T. Valletti (2009): “Active and Passive Waste in Government Spending: Evidence from a Policy Experiment,” *American Economic Review*, 99, 1278–1308.
- Banks, J., and R.K. Sundaram, (1998): “Optimal Retention in Agency Problems,” *Journal of Economic Theory*, 82, 293–323.
- Barro, R.J., (1973): “The Control of Politicians: An Economic Model,” *Public Choice*, 14, 19–42.
- Barro, R.J. (1974): “Are Government Bonds Net Wealth?” *Journal of Political Economy*, 82, 1095–1117
- Barro, R.J. (1979): “On the Determination of the Public Debt,” *Journal of Political Economy*, 87, 940–71.
- Bassetto, M., and T.J. Sargent (2006): “Politics and Efficiency of Separating Capital and Ordinary Government Budgets,” *Quarterly Journal of Economics*, 121, 1167–1210.
- Battaglini, M., and S. Coate (2008): “A Dynamic Theory of Public Spending, Taxation, and Debt,” *American Economic Review*, 98, 201–236.
- Bayoumi, T., and B. Eichengreen (1995): “Restraining Yourself: The Implications of Fiscal Rules for Economic Stabilization,” *IMF Staff Papers*, 42, 32–48.
- Besley, T., and A. Case (1995): “Does Electoral Accountability Affect Economic Policy Choices? Evidence from Gubernatorial Term Limits,” *Quarterly Journal of Economics*, 110, 769–798.
- Besley, T. (2007): *Principled Agents? The Political Economy of Good Government*, Oxford: Oxford University Press.
- Besley, T., and M. Smart (2007): “Fiscal restraints and voter welfare,” *Journal of Public Economics*, 91, 755–773.
- Bisin, A., A. Lizzeri, and L. Yariv (2011): “Government Policy with Time Inconsistent Voters,” mimeo, New York University.
- Bohn, H., and R. Inman (1996): “Balanced-Budget Rules and Public Deficits: Evidence from the U.S. States,” *Carnegie-Rochester Conference Series on Public Policy*, 45, 13–76.
- Bordignon, M., Nannicini, T., and G. Tabellini (2013): “Moderating Political Extremism: Single Round vs. Runoff Elections under Plurality Rule,” IZA Discussion Paper 7561.

- Braun, M., and M. Tommasi (2004): “Subnational Fiscal Rules: A Game Theoretic Approach,” in Kopits, G. (ed.), *Rules-Based Fiscal policy in Emerging Markets: Background, Analysis and Prospects*, Palgrave Macmillan.
- Calonico, S., Cattaneo, M. D., and R. Titiunik (2014a): “Robust Nonparametric Confidence Intervals for Regression-Discontinuity Designs,” *Econometrica*, 82, 2295–2326.
- Calonico, S., Cattaneo, M. D., and R. Titiunik (2014b): “Robust Data-Driven Inference in the Regression-Discontinuity Design,” *Stata Journal*, 14, 909–946.
- Calzolari, G., A. Ichino, F. Manaresi and V. Nellas (2014): “When the Baby Cries at Night: Inelastic Buyers in Non-Competitive Markets,” IZA Discussion Papers 8490, Institute for the Study of Labor (IZA).
- Campa, P. (2011): “Gender Quotas, Female Politicians and Public Expenditures: Quasi-Experimental Evidence,” mimeo, Stockholm University.
- Casaburi, L., and U. Troiano (2015): “Ghost-House Busters: The Electoral Response to a Large Anti Tax Evasion Program,” *Quarterly Journal of Economics*, forthcoming.
- Casas-Arce, P., and A. Saiz (2015): “Women and Power: Unpopular, Unwilling, or Held Back?,” *Journal of Political Economy* 123(3), 641-669, 2015.
- Cellini, S.R., F. Ferreira, and J. Rothstein (2011): “The Value of School Facility Investments: Evidence from a Dynamic Regression Discontinuity Design,” *Quarterly Journal of Economics*, 125, 215–261.
- Chetty, R., Looney, A., and K. Kroft (2009): “Salience and Taxation: Theory and Evidence,” *American Economic Review*, 99, 1145–77.
- Clemens, J. (2012): “State Fiscal Adjustment During Times of Stress: Possible Causes of the Severity and Composition of Budget Cuts,” mimeo.
- Clemens, J., and S. Miran (2012): “The Effects of State Budget Cuts on Employment and Income,” *American Economic Journal: Economic Policy*, 4, 46–68.
- Debrun, X., L. Moulin, A. Turrini, J. Ayuso-i-Casals, and M.S. Kumar (2008): “Tied to the Mast? National Fiscal Rules in the European Union,” *Economic Policy*, 54, 297–362.
- DellaVigna, S., and E. La Ferrara (2010): “Detecting Illegal Arms Trade,” *American Economic Journal: Economic Policy*, 2(4), 26–57.
- Dickert-Conlin, S., and T. Elder (2010): “Suburban Legend: School Cutoff Dates and the Timing of Births,” *Economics of Education Review*, 29, 826–841.

- Drazen, A. (2002): “Fiscal Rules From a Political Economy Perspective,” paper prepared for the IMF–World Bank Conference *Rules-Based Fiscal Policy in Emerging Market Economies*, Oaxaca, Mexico, February 14–16.
- Eichengreen, B., and von Hagen, J. (1996): “Fiscal Policy and Monetary Union: is There a Trade-Off Between Federalism and Budgetary Restrictions?,” NBER Working Paper 5517.
- Feld, L. P., and G. Kirchgssner (2008). “On the effectiveness of debt brakes: The Swiss experience.” *Sustainability of Public Debt*, MIT Press, Cambridge (2008): 223-255.
- Gagliarducci, S., and T. Nannicini (2013): “Do Better Paid Politicians Perform Better? Disentangling Incentives from Selection,” *Journal of the European Economic Association*, 11, 369–398.
- Gavin, M., and R. Perotti (1997), “Fiscal policy in Latin America,” *NBER Macroeconomics Annual* 12, 11–72.
- Gelman, A. and G. Imbens (2014), “Why High-Order Polynomials Should Not be Used in Regression Discontinuity Designs,” working paper.
- Givati, Y., and U. Troiano (2012): “Law, Economics and Culture: Theory and Evidence from Maternity Leave Laws,” *Journal of Law and Economics*, 5(2), 222–250.
- Glaeser, E. (2013): “Urban Public Finance,” in: A.J. Auerbach, R. Chetty, M. Feldstein, E. Saez (eds), *Handbook of Public Economics*, North-Holland.
- Grembi, V., Nannicini, T., and U. Troiano (2012): “Policy Responses to Fiscal Restraints: A Difference-in-Discontinuities Design,” *IZA Discussion Paper* n.6952.
- Hahn, J., P. Todd, and W. Van der Klaauw (2001): “Identification and Estimation of Treatment Effects with Regression Discontinuity Design,” *Econometrica*, 69, 201–209.
- Hallerberg, M., and J. Von Hagen (1999): “Electoral Institutions, Cabinet Negotiations, and Budget Deficits in the EU,” in J. Poterba and J. Von Hagen (eds.), *Fiscal Institutions and Fiscal Performance*, Chicago, IL: University of Chicago Press.
- Hargaden, E. (2015): “Political Fragmentation and Fiscal Policy,” Mimeo, University of Michigan.
- Hines, J. (2011): “State Fiscal Policies and Transitory Income Fluctuations,” *Brookings Papers on Economic Activity*, 2010(2):313-337.
- Ichino, A., and G. Maggi (2000): “Work Environment and Individual Background: Explaining Regional Shirking Differentials in a Large Italian Firm,” *Quarterly Journal of Economics*, 115, 1057–90.

- Imbens, G., and T. Lemieux (2008): “Regression Discontinuities Designs: A Guide to Practice,” *Journal of Econometrics*, 142, 615–635.
- International Monetary Fund (2009): *Anchoring Expectations for Sustainable Public Finances*, Washington DC.
- Kaufmann, D., Kraay, A., and M. Mastruzzi (2010): “The Worldwide Governance Indicators: Methodology and Analytical Issues,” World Bank Policy Research Working Paper 5430.
- Knight, B.G. (2000): “Supermajority Voting Requirements for Tax Increases: Evidence from the States,” *Journal of Public Economics*, 76, 41–67.
- Lalive, R. (2008): “How Do Extended Benefits Affect Unemployment Duration: A Regression Discontinuity Approach,” *Journal of Econometrics*, 142(2), 785–806.
- Lemieux, T., and K. Milligan (2008): “Incentive Effects of Social Assistance: A Regression Discontinuity Approach,” *Journal of Econometrics*, 142, 807–828.
- Lee, D.S., and T. Lemieux (2010): “Regression Discontinuities Designs in Economics,” *Journal of Economic Literature*, 48, 281–355.
- Leonardi, M., and G. Pica (2013): “Who Pays for It? The Heterogeneous Wage Effects of Employment Protection Legislation,” *Economic Journal*, forthcoming.
- List, J.A., and D.M. Sturm (2006): “How Elections Matter: Theory and Evidence form Environmental Policy,” *Quarterly Journal of Economics*, 121, 1249–1281.
- Lizzeri, A. (1999): “Budget Deficits and Redistributive Politics,” *Review of Economic Studies*, 66, 909–928.
- Lucas, R., and N. Stokey (1983): “Optimal Fiscal and Monetary Policy in an Economy without Capital,” *Journal of Monetary Economics*, 12, 55–94.
- Ludwig, J., and D. L. Miller (2007): “Does Head Start Improve Children’s Life Chances? Evidence from a Regression Discontinuity Design,” *Quarterly Journal of Economics* 122(1): 159–208.
- Maskin, E., and J. Tirole (2004): “The Politician and the Judge: Accountability in Government,” *American Economic Review*, 94, 1034–1054.
- McCrary, J. (2008): “Manipulation of the Running Variable in the Regression Discontinuity Design: A Density Test,” *Journal of Econometrics*, 142, 698–714.
- Milesi-Ferretti, G.M. (2003): “Good, Bad or Ugly? On the Effects of Fiscal Rules on Creative Accounting,” *Journal of Public Economics*, 88, 377–394.

- Nannicini, T., A. Stella, G. Tabellini, and U. Troiano (2013): “Social Capital and Political Accountability,” *American Economic Journal: Economic Policy*, 5, 222–250.
- Persson, T., and G. Tabellini (2000): *Political Economics*, Cambridge, MA: MIT Press.
- Persson, T., and L. Svensson (1989): “Why a Stubborn Conservative Would Run a Deficit: Policy with Time-Inconsistent Preferences,” *Quarterly Journal of Economics*, 104(2), 325–345.
- Petterson-Lidbom, P. (2001): “An Empirical Investigation of the Strategic Use of Debt,” *Journal of Political Economy*, 109, 570–584.
- Petterson-Lidbom, P. (2012): “Does the Size of the Legislature Affect the Size of Government: Evidence from Two Natural Experiments,” *Journal of Public Economics*, 96, 269–278.
- Poterba, J. (1994): “State Responses to Fiscal Crises: The Effects of Budgetary Institutions and Politics,” *Journal of Political Economy*, 102, 799–821.
- Poterba, J. (1996): “Budget Institutions and Fiscal Policy in the U.S. States,” *American Economic Review Papers and Proceedings*, 86, 395–400.
- Poterba, J., and J. Von Hagen (eds) (1999): *Fiscal Institutions and Fiscal Performance*, Chicago, IL: University of Chicago Press.
- Rogoff, K. (1990): “Equilibrium Political Budget Cycles,” *American Economic Review*, 80, 21–36.
- Song, Z., K. Storesletten, and F. Zilibotti (2012): “Rotten Parents and Disciplined Children: A Dynamic Politico-Economic Theory of Public Expenditure and Debt,” *Econometrica*, 80(6), 2785–2803.
- Sutherland, D., R. Price, and I. Joumard (2005): “Fiscal Rules for Sub-Central Governments: Design and Impact,” OECD Economics Department Working Paper 465.
- Tabellini, G., and A. Alesina (1990): “Voting on the Budget Deficit,” *American Economic Review*, 80, 37–49.
- Ter-Minassian, T. (2007): “Fiscal Rules for Sub-national Governments: Can They Promote Fiscal Discipline?” *OECD Journal on Budgeting*, 6(3).
- Van der Klaauw, W. (2008): “Regression-Discontinuity Analysis: A Survey of Recent Developments in Economics,” *Labour*, 22, 219–245.
- Von Hagen, J. (1991): “A Note on the Empirical Effectiveness of Formal Fiscal Restraints,” *Journal of Public Economics*, 44, 199–210.

Wyplosz, C. (2012), “Fiscal Rules: Theoretical Issues and Historical Experiences,” NBER Working Paper 17884.

Yared, P. (2010): “Politicians, Taxes and Debt,” *Review of Economic Studies*, 77, 806–40.

Tables and figures

Table 1: Rules of the Domestic Stability Pact (DSP)

Year	Target of the DSP rules	Covered municipalities
1997	None	All
1998	None	All
1999	Fiscal gap: zero growth	All
2000	Fiscal gap: zero growth	All
2001	Fiscal gap: max 3% growth	Above 5,000
2002	Fiscal gap: max 2.5% growth	Above 5,000
2003	Fiscal gap: zero growth	Above 5,000
2004	Fiscal gap: zero growth	Above 5,000

Notes. The *Domestic Stability Pact* is a set of fiscal rules imposed by the central government to discipline the fiscal management of local governments. The main target is the *Fiscal gap* (see Appendix Table A1 for details). The growth of the fiscal gap with respect to its value two years before is constrained to be either zero or below 2.5%/3% depending on the year of the DSP. Legislative sources: annual national budget law (*Legge Finanziaria*) from 1999 to 2004.

Table 2: Legislative thresholds for Italian municipalities, 1997–2004

Population	Wage of mayor	Wage of executive committee	Size of executive committee	Size of city council	Electoral rule
Below 1,000	1,291	15%	4	12	single
1,000-3,000	1,446	20%	4	12	single
3,000-5,000	2,169	20%	4	16	single
5,000-10,000	2,789	50%	4	16	single
10,000-15,000	3,099	55%	6	20	single
15,000-30,000	3,099	55%	6	20	runoff
30,000-50,000	3,460	55%	6	30	runoff
50,000-100,000	4,132	75%	6	30	runoff
100,000-250,000	5,010	75%	10	40	runoff
250,000-500,000	5,784	75%	12	46	runoff
Above 500,000	7,798	75%	14-16	50-60	runoff

Notes. Policies varying at different legislative thresholds in the period 1999–2004. *Population* is the number of resident inhabitants as measured by the last available Census. *Wage of mayor* and *Wage of executive committee* refer to the monthly gross wage of the mayor and the members of the executive committee, respectively; the latter is expressed as a percentage of the former, which refers to 2000 and is measured in Euros. *Size of executive committee* is the maximum allowed number of executives appointed by the mayor. *Size of city council* is the number of seats in the city council. The wage thresholds at 1,000 and 10,000 were introduced in 2000; all of the other thresholds date back to 1960. Since 1993, the *Electoral rule* for the mayor is plurality with either single round or runoff.

Table 3: Outcome variables, descriptive statistics

	Municipalities above 5,000	Municipalities below 5,000
A. Fiscal discipline		
Deficit	11.080	15.457
Fiscal gap	170.724	208.624
B. Expenditures		
Current outlays	475.312	502.181
Capital outlays	438.838	508.794
Debt service	29.139	30.107
C. Revenues		
Taxes	194.887	175.825
Fees & tariffs	56.601	58.938
Central transfers	188.783	223.274
Other revenues	491.938	567.589
D. Tax instruments		
Real estate tax rate	0.587	0.576
Income tax surcharge	0.309	0.309
Obs.	2,970	3,330

Notes. Municipalities between 3,500 and 7,000 inhabitants; budget years between 1999 and 2004. The average values of per-capita policy outcomes are in 2009 Euros. The real estate tax rate and the income tax surcharge are in percentage points; the former can vary from 0.4 to 0.7 percent; the latter can vary from 0 to 0.5 percent.

Table 4: Effect of relaxing fiscal rules, diff-in-disc estimates

<i>Panel A: Fiscal Discipline and Expenditures</i>						
	Deficit	Fiscal Gap	Current Outlays	Capital Outlays	Debt Service	
Calonico et al. (2014)	17.495** (7.737)	59.468* (32.079)	-47.698 (59.522)	102.557 (101.152)	-2.607 (8.057)	
<i>h</i>	600	513	443	427	404	
Obs.	2,414	2,136	1,828	1,724	1,646	
Cross Validation	9.454** (4.343)	48.469** (23.315)	-10.665 (32.756)	-4.221 (83.336)	-2.096 (3.587)	
<i>h</i>	1,498	833	979	944	1,202	
Obs.	5,858	3,438	4,112	3,974	4,908	
<i>Mean</i>	13.393	190.757	489.515	475.815	29.651	
<i>Panel B: Revenues and Tax Instruments</i>						
	Taxes	Fees& tariffs	Central Transfers	Other Revenues	Real estate tax rate	Income tax surcharge
Calonico et al. (2014)	-76.083** (32.597)	-2.879 (10.140)	35.001 (27.634)	-21.900 (120.248)	-0.050* (0.026)	-0.070* (0.039)
<i>h</i>	378	505	564	399	435	441
Obs.	1,536	2,104	2,286	1,622	1,782	1,310
Cross Validation	-34.748* (20.166)	1.413 (7.199)	32.938 (21.721)	-81.308 (62.926)	-0.027* (0.016)	-0.044* (0.026)
<i>h</i>	684	795	833	1,498	907	871
Obs.	2,810	3,238	3,438	5,858	3,806	2,594
<i>Mean</i>	184.811	57.836	131.026	531.925	0.581	0.309

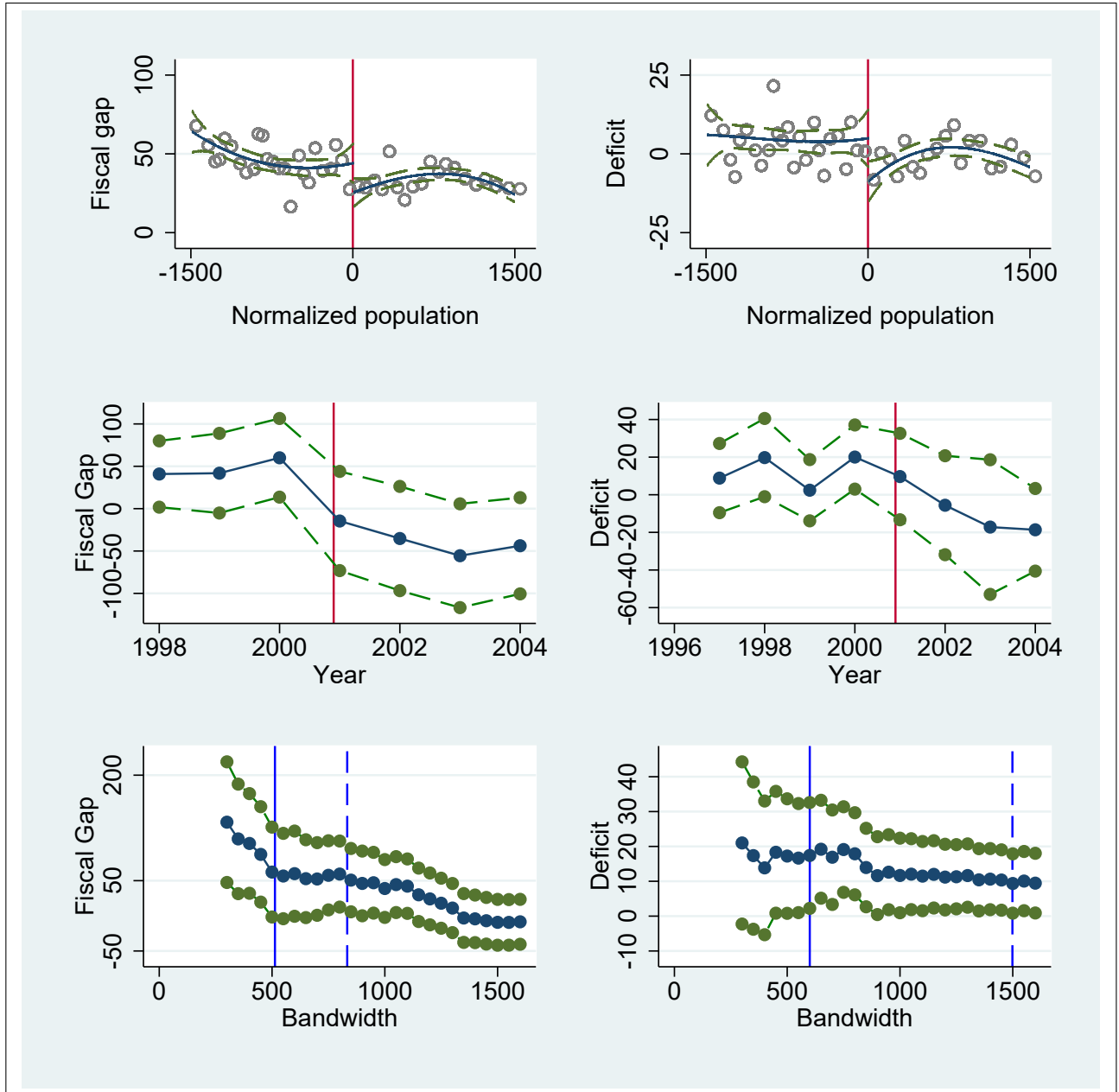
Notes. Municipalities between 3,500 and 7,000 inhabitants; budget years between 1999 and 2004. Diff-in-disc estimates of the impact of relaxing fiscal rules on policy outcomes and tax instruments below 5,000 after 2001. Estimation method: Local Linear Regression with two optimal bandwidth h , as in equation (1). The optimal bandwidth h is estimated either following Calonico, Cattaneo, and Titiunik (2014a, 2014b), or implementing the cross-validation algorithm proposed by Ludwig and Miller (2007). All policy outcomes are per capita and in 2009 Euros. Significance at the 10% level is represented by *, at the 5% level by **, and at the 1% level by ***.

Table 5: Political economy of deficit bias

	<i>Without covariates</i>	<i>With covariates</i>
Treatment*Term Limit	-27.653** (13.858)	-23.680* (13.862)
Term Limit (Mean)	0.441	0.441
Treatment*Number of Parties	10.372* (11.983)	5.093* (2.807)
Number of Parties (Mean)	2.66	2.66
Treatment*Young Cohort	-8.274** (3.869)	-8.998** (3.714)
Young Cohort (Mean)	14.164	14.164
Treatment*Public Good	-3.168** (1.444)	-2.587* (1.385)
Public Good (Mean)	78.120	78.120
<i>h</i>	600	600
Obs.	2,414	2,414

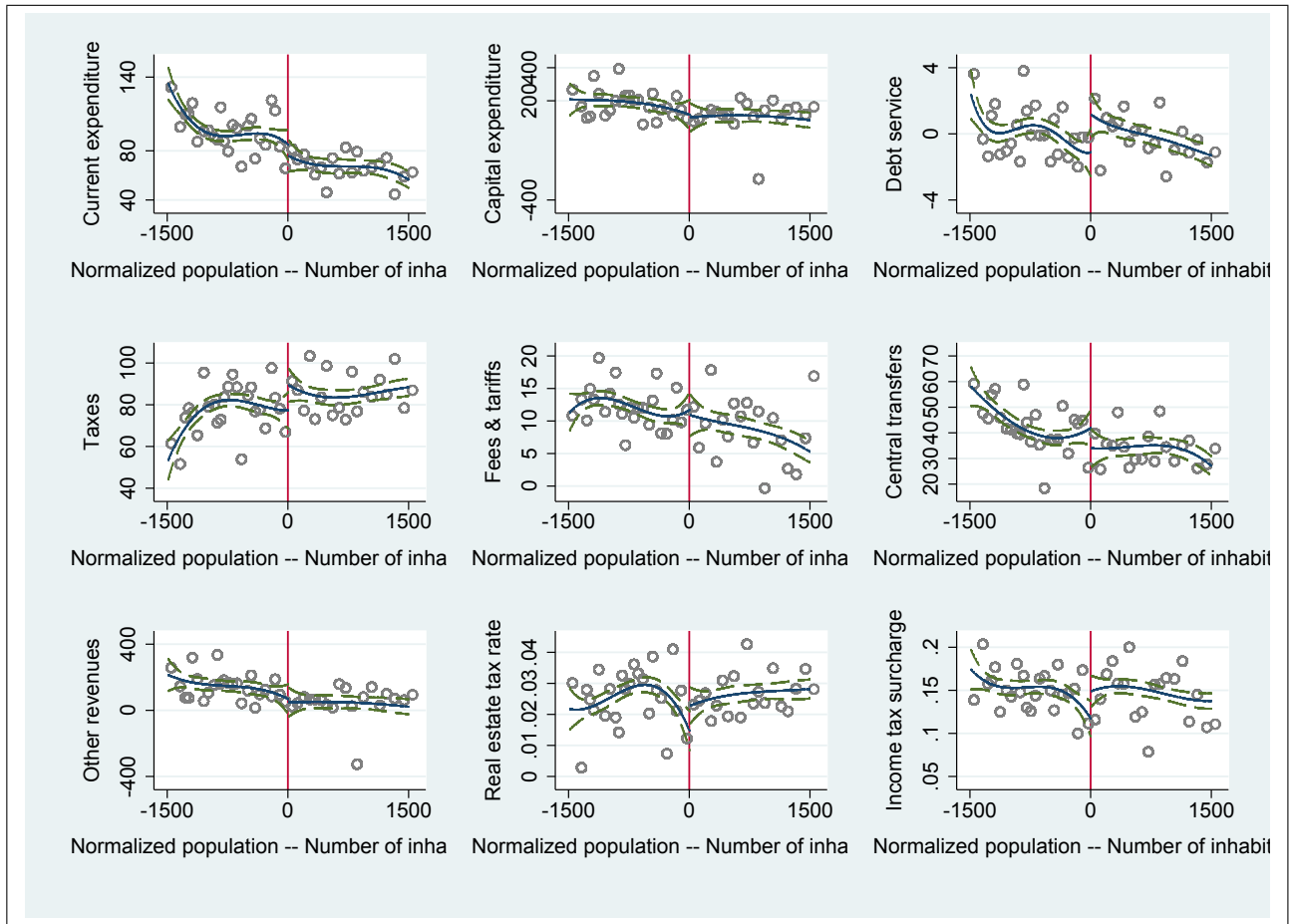
Notes. Municipalities between 3,500 and 7,000 inhabitants; budget years between 1999 and 2004. Diff-in-disc estimates of the impact of relaxing fiscal rules on fiscal discipline below 5,000 after 2001 interacted with the relevant heterogeneity dimension (that is, dummy for binding term limit; number of parties in the city council; dummy for above-median percentage of young cohorts; dummy for above-median speed of public good provision). Estimation method: Local Linear Regression with the optimal bandwidth h estimated following Calonico, Cattaneo, and Titiunik (2014a, 2014b). The *with covariates* specification evaluates whether the estimates are statistically different in the two subsamples also controlling for a full set of interactions between the above specifications and appropriate covariates, which are: average taxable income; mayor's years of schooling; and whether the municipality is in the North. All variables are per capita and in 2009 Euros. Robust standard errors clustered at the municipality level are in parentheses. Significance at the 10% level is represented by *, at the 5% level by **, and at the 1% level by ***.

Figure 1: Difference-in-discontinuities for deficit and fiscal gap



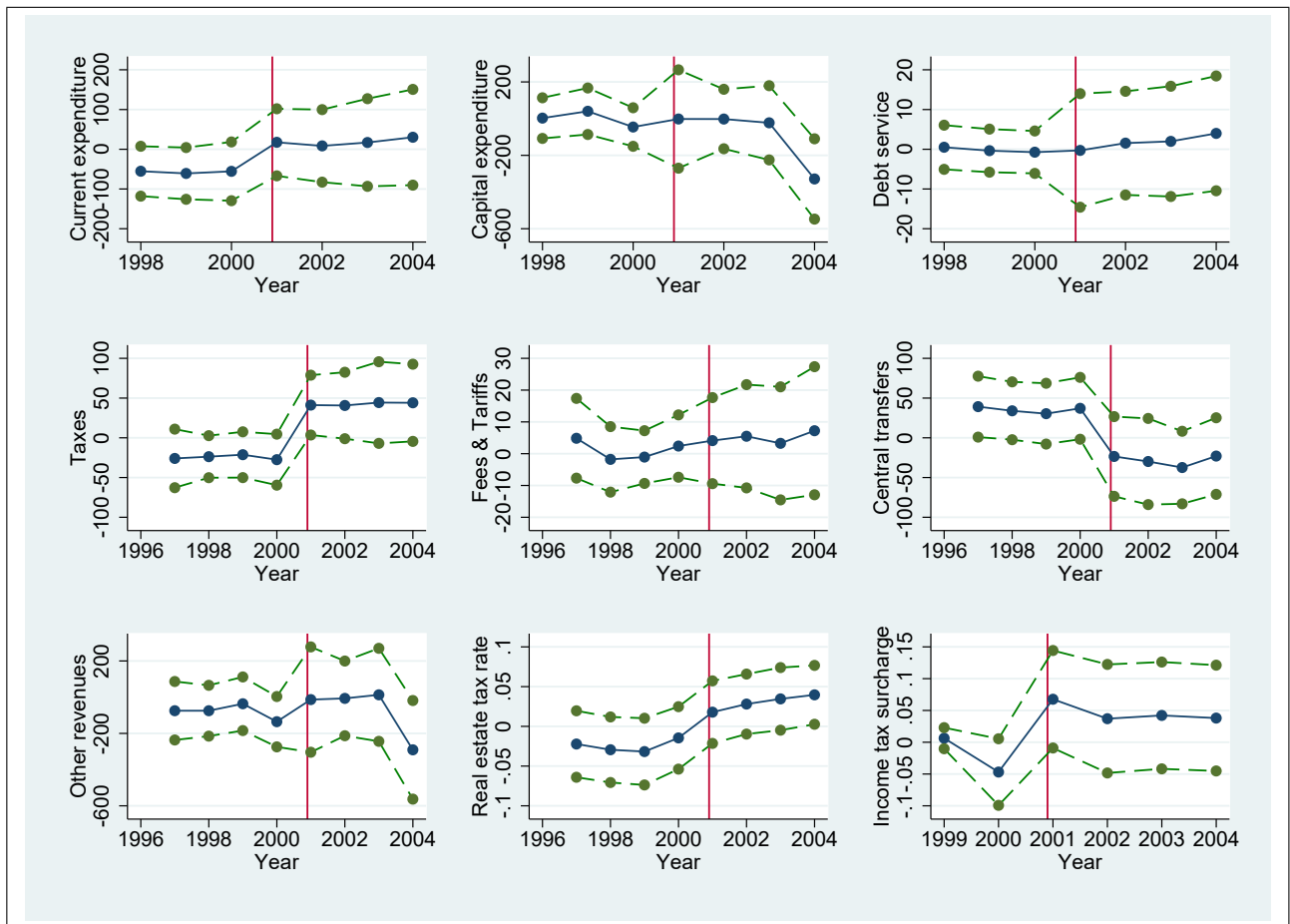
Notes. Top graphs: difference-in-discontinuities. Vertical axis: difference of each post-rule (i.e., 2001, 2002, 2003, and 2004) outcome value and each pre-rule (i.e., 1999 and 2000) outcome value. Horizontal axis: actual population size minus 5,000. The central line is a spline 3^{rd} -order polynomial fit; the lateral lines represent the 95% confidence interval. Scatter points are averaged over intervals of 50 inhabitants. Middle graphs: yearly RD coefficients. Vertical axis: point estimates of Local Linear regressions with optimal bandwidth computed following Calonico, Cattaneo, and Titiunik (2014a, 2014b). Horizontal axis: year. The central line is the point estimate; the lateral lines represent the 95% confidence interval. Bottom graphs: difference in discontinuities. Vertical axis: diff-in-disc coefficients. Horizontal axis: bandwidth used to estimate the reported diff-in-disc coefficients.

Figure 2: Difference-in-discontinuities for policy outcomes and tax instruments



Difference-in-discontinuities. Vertical axis: difference of each post-rule (i.e., 2001, 2002, 2003, and 2004) outcome value and each pre-rule (i.e., 1999 and 2000) outcome value. Horizontal axis: actual population size minus 5,000. The central line is a spline 3^{rd} -order polynomial fit; the lateral lines represent the 95% confidence interval. Scatter points are averaged over intervals of 50 inhabitants.

Figure 3: Yearly RD estimates for policy outcomes and tax instruments



Notes. Yearly RD coefficients. Vertical axis: point estimates of Local Linear regressions with optimal bandwidth computed following Calonico, Cattaneo, and Titiunik (2014a, 2014b). Horizontal axis: year. The central line is the point estimate; the lateral lines represent the 95% confidence interval.

Appendix [For Online Publication]

This Appendix provides additional information and robustness checks, which are also discussed in the paper. In particular, we describe the characteristics and sources of the variables we use (Table A1), and we present further robustness checks:

- difference in differences (Table A2);
- diff-in-disc estimates with covariates (Table A3);
- balance tests of time-invariant municipal characteristics (Table A4);
- falsification tests using 1999 (Table A5);
- falsification tests for the heterogeneity analysis (Table A6);
- the effect of relaxing fiscal rules, without fiscal years 2001 and 2002 (Table A7);
- the effect of relaxing fiscal rules, without fiscal years 1999 and 2000 (Table A8);
- pre-trends for difference-in-differences design (Figure A1);
- test of the continuity of the density at 5,000 in the 1991 Census, in the 2001 Census, and with respect to the difference between the two Censuses (Figure A2);
- sensitivity of the diff-in-disc estimates to the bandwidth for budget items (Figure A3);
- placebo tests based on permutation methods (Figure A4 and Figure A5).

Table A1: Variables' description and sources

Variable	Definition and measure	Available from-to	Source
<i>Deficit</i>	Expenditure minus revenues Per-resident; 2009 Euros	1997-2004	IMI Financial reports, authors' calculations
<i>Fiscal gap</i>	Expenditure minus revenues (net of central transfers and debt service) Per-resident; 2009 Euros	1998-2004	IMI Financial reports, authors' calculations
<i>Current outlays</i>	Total current expenditure Per-resident; 2009 Euros	1998-2004	IMI Financial reports, <i>Quadro 4</i>
<i>Capital outlays</i>	Total capital expenditure Per-resident; 2009 Euros	1998-2004	IMI Financial reports, <i>Quadro 5</i>
<i>Debt service</i>	Interest payments on outstanding debt Per-resident; 2009 Euros	1998-2004	IMI Financial reports, <i>Quadro 4</i>
<i>Taxes</i>	Total tax revenues Per-resident; 2009 Euros	1997-2004	IMI Financial reports, <i>Quadro 2</i>
<i>Fees & tariffs</i>	Total revenues from fees and tariffs Per-resident; 2009 Euros	1997-2004	IMI Financial reports, <i>Quadro 2</i>
<i>Central transfers</i>	Total transfers by the central state Per-resident; 2009 Euros	1997-2004	IMI Financial reports, <i>Quadro 2</i>
<i>Other revenues</i>	Residual category Per-resident; 2009 Euros	1997-2004	IMI Financial reports, authors' calculations
<i>Real estate tax rate</i>	The tax rate on real estate From 0.004 to 0.007 of the home value	1997-2004	IFEL-ANCI
<i>Income tax surcharge</i>	Municipal income tax surcharge Up to 0.6% of the taxable income	1999-2004	ME-DF

Notes: IMI stands for Italian Ministry of the Interior; IFEL-ANCI stands for Institute for the Local Finance and Economy of the National Italian Association of Municipalities; ME-DF stands for Italian Ministry of the Economy, Department of Finance.

Table A1: Variables' description and sources (cont'd)

Variable	Definition and Measure	Available from-to	Source
<i>Census population</i>	Census population of the municipality	1991 and 2001	ISTAT
<i>Young cohorts</i>	Ratio of residents aged 0–14 over resident population Fraction at municipality level	1998-2004	ISTAT
<i>Speed of public good</i>	Paid over committed current expenditures Fraction at municipality level	1999-2004	IMI Financial reports, authors' calculations
<i>Area size</i>	Municipal area size In km ²	1999-2004	IMI
<i>Sea level</i>	Municipal sea level In meters	1999-2004	IMI
<i>Taxable income</i>	Municipal taxable income mean Per-resident; 2009 Euros	1999-2004	ME-DF
<i>Female Mayor</i>	Equal to 1 if the mayor in office is a woman Dummy variable	1999-2004	IMI Register of local politicians
<i>Mayor's age</i>	Age of the mayor Number of years	1999-2004	IMI Register of local politicians
<i>Mayor's schooling</i>	Years of choosing of the mayor in office Number of years	1999-2004	IMI Register of local politicians
<i>Mayor's tenure</i>	Experience of the mayor in office Number of mandates	1999-2004	IMI Register of local politicians
<i>Term limit</i>	Equal to 1 if the mayor in office faces term limit Dummy variable	1999-2004	IMI Register of local politicians

Notes: IMI stands for Italian Ministry of the Interior; IFEL-ANCI stands for Institute for the Local Finance and Economy of the National Italian Association of Municipalities; ME-DF stands for Italian Ministry of the Economy, Department of Finance.

Table A2: Difference-in-differences estimates

<i>Panel A: Fiscal Discipline and Expenditures</i>						
	Deficit	Fiscal Gap	Current Outlays	Capital Outlays	Debt Service	
Difference in Differences	5.279* (2.699)	16.669*** (3.384)	33.974*** (3.650)	84.534*** (26.497)	0.431 (0.308)	
Year Fixed Effect	Yes	Yes	Yes	Yes	Yes	
Obs.	6,300	6,300	6,300	6,300	6,300	
Municipalities	1,050	1,050	1,050	1,050	1,050	
<i>Mean</i>						
<i>Panel B: Revenues and Tax Instruments</i>						
	Taxes	Fees & tariffs	Central Transfers	Other Revenues	Real estate tax rate	Income tax surcharge
Difference in Differences	-8.472*** (1.936)	4.369*** (0.846)	11.822*** (2.148)	105.941*** (26.685)	-0.001 (0.002)	0.004 (0.004)
Year Fixed Effect	Yes	Yes	Yes	Yes	Yes	Yes
Obs.	6,300	6,300	6,300	6,300	6,300	4,588
Municipalities	1,050	1,050	1,050	1,050	1,050	828

Notes. Municipalities between 3,500 and 7,000 inhabitants; budget years between 1999 and 2004. Differences in differences estimates of the impact of introducing fiscal rules on policy outcomes below 5,000 after 1999. All policy outcomes are per capita and in 2009 Euros. Significance at the 10% level is represented by *, at the 5% level by **, and at the 1% level by ***.

Table A3: The effect of relaxing fiscal rules, estimates with covariates

<i>Panel A: Fiscal Discipline and Expenditures</i>						
	Deficit	Fiscal Gap	Current Outlays	Capital Outlays	Debt Service	
Calonico et al. (2014)	16.871** (7.456)	68.857*** (26.122)	-68.088 (55.204)	83.495 (89.561)	-3.746 (7.379)	
<i>h</i>	600	513	443	427	404	
Obs.	2,414	2,136	1,828	1,724	1,646	
Cross Validation	9.473** (4.140)	48.296*** (18.592)	-9.246 (28.486)	31.130 (75.384)	-1.275 (3.028)	
<i>h</i>	1498	833	979	944	1202	
Obs.	5,858	3,438	4,112	3,974	4,908	
<i>Mean</i>	13.393	190.757	489.515	475.815	29.651	
<i>Panel B: Revenues and Tax Instruments</i>						
	Taxes	Fees & tariffs	Central Transfers	Other Revenues	Real estate tax rate	Income tax surcharge
Calonico et al. (2014)	-78.018*** (29.298)	-6.598 (9.517)	43.093** (21.334)	-56.989 (102.313)	-0.051** (0.026)	-0.061 (0.041)
<i>h</i>	378	505	564	399	435	441
Obs.	1,536	2,104	2,286	1,622	1,782	1,310
Cross Validation	-42.825** (18.377)	-0.960 (6.799)	33.136** (16.425)	-30.224 (55.204)	-0.027* (0.016)	-0.040 (0.026)
<i>h</i>	684	795	833	1498	907	871
Obs.	2,810	3,238	3,438	5,858	3,806	2,594
<i>Mean</i>	184.811	57.836	131.026	531.925	0.581	0.309

Notes. Municipalities between 3,500 and 7,000 inhabitants; budget years between 1999 and 2004. Diff-in-disc estimates of the impact of relaxing fiscal rules on policy outcomes and tax instruments below 5,000 after 2001. Covariates are: dummies for north west, north east, and south (reference category: center), municipal sea level, and municipal area. Estimation method: Local Linear Regression with two optimal bandwidth h , as in equation (1). The optimal bandwidth h is estimated either following Calonico, Cattaneo, and Titiunik (2014a, 2014b), or implementing the cross-validation algorithm proposed by Ludwig and Miller (2007). All policy outcomes are per capita and in 2009 Euros. Significance at the 10% level is represented by *, at the 5% level by **, and at the 1% level by ***.

Table A4: Balance tests of time-invariant characteristics

	North-West	North-East	Center	South	Area size	Sea level
Calonico et al. (2014)	0.163*	-0.048	-0.068	-0.032	1.526	33.4798
	(0.087)	(0.075)	(0.080)	(0.074)	(8.051)	(31.429)
h	447	442	518	450	563	336
Obs.	1,350	1,908	2,190	1,920	2,340	1,482
Cross Validation	0.115	0.009	-0.074	-0.094*	3.261	5.542
	(0.102)	(0.070)	(0.056)	(0.048)	(9.703)	(26.588)
h	307	529	1,311	1,050	419	753
Obs.	1,350	2,220	5,430	4,494	1,812	3,168

Notes. Municipalities between 3,500 and 7,000 inhabitants. Diff-in-disc estimates. Estimation method: Local Linear Regression with two optimal bandwidth h , as in equation (1). The optimal bandwidth h is estimated either following Calonico, Cattaneo, and Titiunik (2014a, 2014b), or implementing the cross-validation algorithm proposed by Ludwig and Miller (2007). Robust standard errors clustered at the municipality level are in parentheses. Significance at the 10% level is represented by *, at the 5% level by **, and at the 1% level by ***.

Table A5: Falsification test in 1999

<i>Panel A: Fiscal Discipline and Expenditures</i>					
	Deficit	Fiscal Gap	Current Outlays	Capital Outlays	Debt Service
Calonico et al. (2014)	3.587 (7.105)	8.878 (11.016)	-0.346 (9.863)	-1.433 (59.782)	0.433 (1.341)
<i>h</i>	576	537	317	368	372
Obs.	1,420	987	621	726	735
Cross Validation	2.640 (5.120)	0.433 (7.558)	-2.325 (9.959)	-34.087 (36.921)	-0.683 (0.882)
<i>h</i>	1,498	1,132	401	944	1,022
Obs.	3,816	2,178	774	3,974	1,968
<i>Mean</i>	13.393	190.757	489.515	475.815	29.651
<i>Panel B: Revenues and Tax Instruments</i>					
	Taxes	Fees & tariffs	Central Transfers	Other Revenues	Real estate tax rate
Calonico et al. (2014)	-3.581 (4.561)	-0.497 (3.420)	-0.465 (6.196)	10.235 (44.910)	0.001 (0.009)
<i>h</i>	334	318	544	310	395
Obs.	872	828	1,336	812	1,024
Cross Validation	-6.709 (5.116)	1.536 (3.174)	4.026 (5.842)	-10.373 (30.651)	0.004 (0.006)
<i>h</i>	281	392	833	945	1,129
Obs.	716	1,012	2,900	2,388	2,900
<i>Mean</i>	184.811	57.836	131.026	531.925	0.581

Notes. Municipalities between 3,500 and 7,000 inhabitants; budget years between 1997 and 2000. Diff-in-disc estimates of the (false) impact of introducing fiscal rules on policy outcomes below 5,000 after 1999 (when no discontinuity was introduced by the DSP; see Table 1). Estimation method: Local Linear Regression with two optimal bandwidth h , as in equation (1). The optimal bandwidth h is estimated either following Calonico, Cattaneo, and Titiunik (2014a, 2014b), or implementing the cross-validation algorithm proposed by Ludwig and Miller (2007). All policy outcomes are per capita and in 2009 Euros. The real estate tax rate is in percentage points (the income tax surcharge is not available for this test because it was introduced in 1999). Significance at the 10% level is represented by *, at the 5% level by **, and at the 1% level by ***.

Table A6: The political economy of deficit bias– Falsification test

	<i>Without covariates</i>
Treatment*Term Limit	-17.448
	(12.860)
Term Limit (Mean)	0.441
Treatment*Number of Parties	-1.630
	(3.331)
Number of Parties (Mean)	
Treatment*Young Cohort	5.818
	(10.070)
Young Cohort (Mean)	
Treatment*Public Good	0.688
	(10.383)
Public Good (Mean)	
Obs.	4,176

Notes. Municipalities between 3,500 and 7,000 inhabitants; budget years between 1997 and 2000. Diff-in-disc estimates of the (false) impact of introducing fiscal rules on policy outcomes below 5,000 after 1999 (when no discontinuity was introduced by the DSP) in different subsamples (that is, above vs. below median number of parties; binding vs. non-binding term limit; above vs. below median percentage of young cohorts; above vs. below median speed of public good provision). Estimation method: Local Linear Regression with the optimal bandwidth h is estimated either following Calonico, Cattaneo, and Titiunik (2014a, 2014b). All variables are per capita and in 2009 Euros. Robust standard errors clustered at the municipality level are in parentheses. Significance at the 10% level is represented by *, at the 5% level by **, and at the 1% level by ***.

Table A7: The effect of relaxing fiscal rules, without fiscal years 2001 and 2002

<i>Panel A: Fiscal Discipline and Expenditures</i>						
	Deficit	Fiscal Gap	Current Outlays	Capital Outlays	Debt Service	
Calonico et al. (2014)	29.276*	75.374**	-40.012	150.339	-3.412	
	(14.999)	(35.012)	(66.655)	(111.385)	(8.076)	
<i>h</i>	572	508	431	427	421	
Obs.	1,564	1,428	1,198	1,180	1,168	
Cross Validation	13.355*	46.159**	-3.425	-38.664	-2.682	
	(7.916)	(22.787)	(35.448)	(58.779)	(3.616)	
<i>h</i>	1461	1022	979	1498	1239	
Obs.	3,902	2,876	2,760	3,974	3,418	
<i>Panel B: Revenues and Tax Instruments</i>						
	Taxes	Fees& tariffs	Central Transfers	Other Revenues	Real estate tax rate	Income tax surcharge
Calonico et al. (2014)	-71.582**	-3.605	38.450	67.108	-0.046*	-0.059
	(33.865)	(11.144)	(28.152)	(133.387)	(0.025)	(0.039)
<i>h</i>	410	511	564	436	441	470
Obs.	1,140	1,438	1,542	1,214	1,234	900
Cross Validation	-32.201	-1.542	26.857	-68.474	-0.021	-0.045**
	(22.978)	(7.311)	(19.820)	(62.926)	(0.015)	(0.021)
<i>h</i>	688	942	1022	1498	985	1493
Obs.	1,902	2,658	2,876	3,974	2,776	2,736

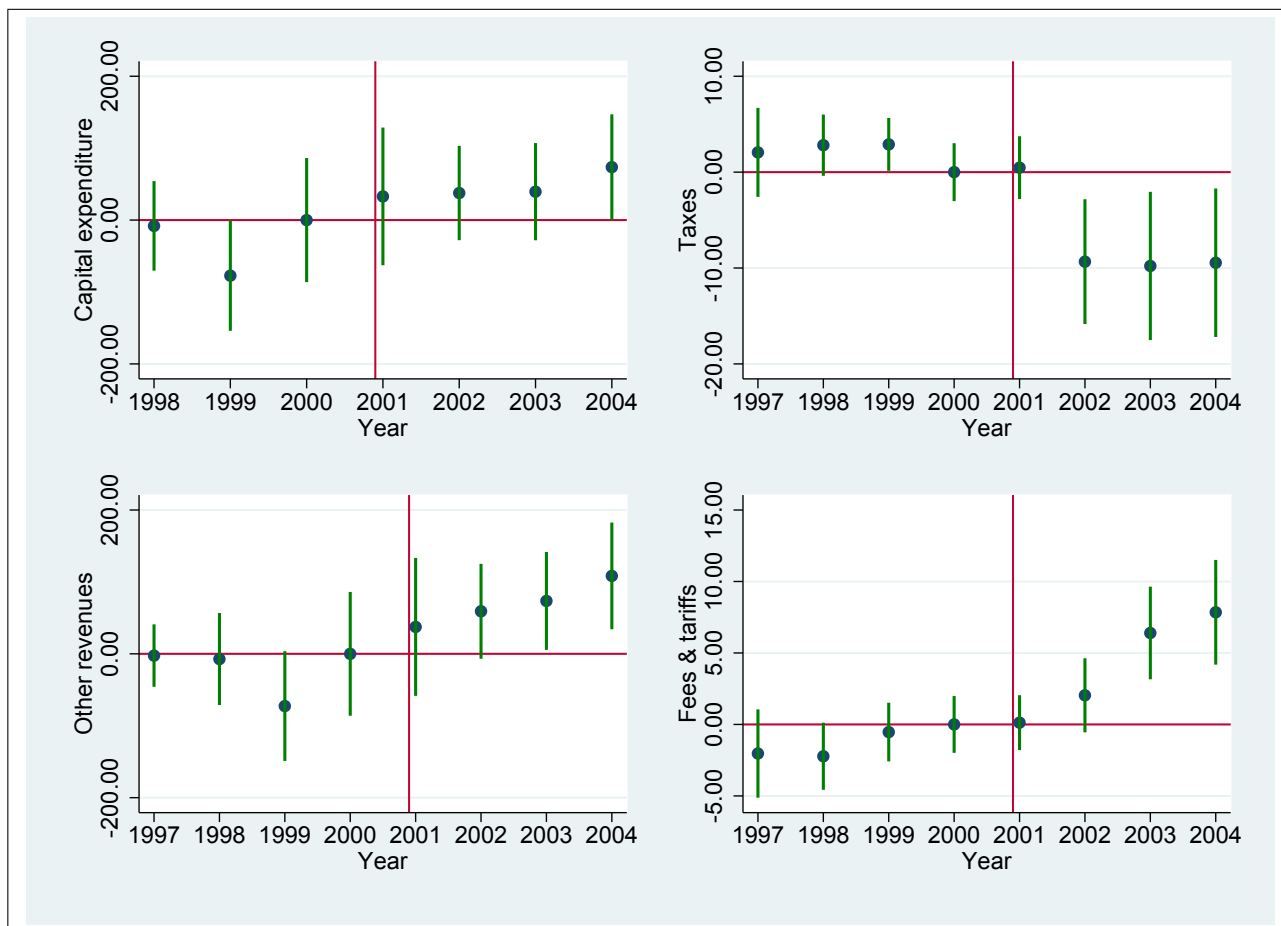
Notes. Municipalities between 3,500 and 7,000 inhabitants; budget years 1998, 2003, and 2004. Diff-in-disc estimates of the impact of relaxing fiscal rules on policy outcomes and tax instruments below 5,000 after 2001. Estimation method: Local Linear Regression with two optimal bandwidth h , as in equation (1). The optimal bandwidth h is estimated either following Calonico, Cattaneo, and Titiunik (2014a, 2014b), or implementing the cross-validation algorithm proposed by Ludwig and Miller (2007). All policy outcomes are per capita and in 2009 Euros. Significance at the 10% level is represented by *, at the 5% level by **, and at the 1% level by ***.

Table A8: The effect of relaxing fiscal rules, without fiscal years 1999 and 2000

<i>Panel A: Fiscal Discipline and Expenditures</i>						
	Deficit	Fiscal Gap	Current Outlays	Capital Outlays	Debt Service	
Calonico et al. (2014)	22.998**	83.552***	-63.760	100.060	-2.748	
	(8.925)	(30.518)	(56.867)	(104.360)	(8.828)	
<i>h</i>	504	563	510	437	402	
Obs.	1,890	1,696	1,587	1,329	1,222	
Cross Validation	15.644***	68.222***	-41.518	-15.656	-2.503	
	(5.512)	(23.181)	(28.112)	(51.076)	(3.957)	
<i>h</i>	1497	836	1497	1497	1243	
Obs.	5,228	2,559	4,326	4,326	3,789	
<i>Panel B: Revenues and Tax Instruments</i>						
	Taxes	Fees& tariffs	Central Transfers	Other Revenues	Real estate tax rate	Income tax surcharge
Calonico et al. (2014)	-81.706***	1.984	50.781*	-89.995	-0.041	-0.090**
	(30.295)	(11.296))	(29.412)	(148.529)	(0.026)	(0.042)
<i>h</i>	427	518	531	275	413	440
Obs.	1,546	1,938 1,970	1,000	1,508	1,164	
Cross Validation	-39.133*	3.597	57.100**	-335.604	-0.010	-0.078**
	(21.945)	(6.729)	(22.337)	(300.929)	(0.017)	(0.034)
<i>h</i>	649	1202	797	1497	870	652
Obs.	2,364	4,399	2,884	5,227	3,228	1,718

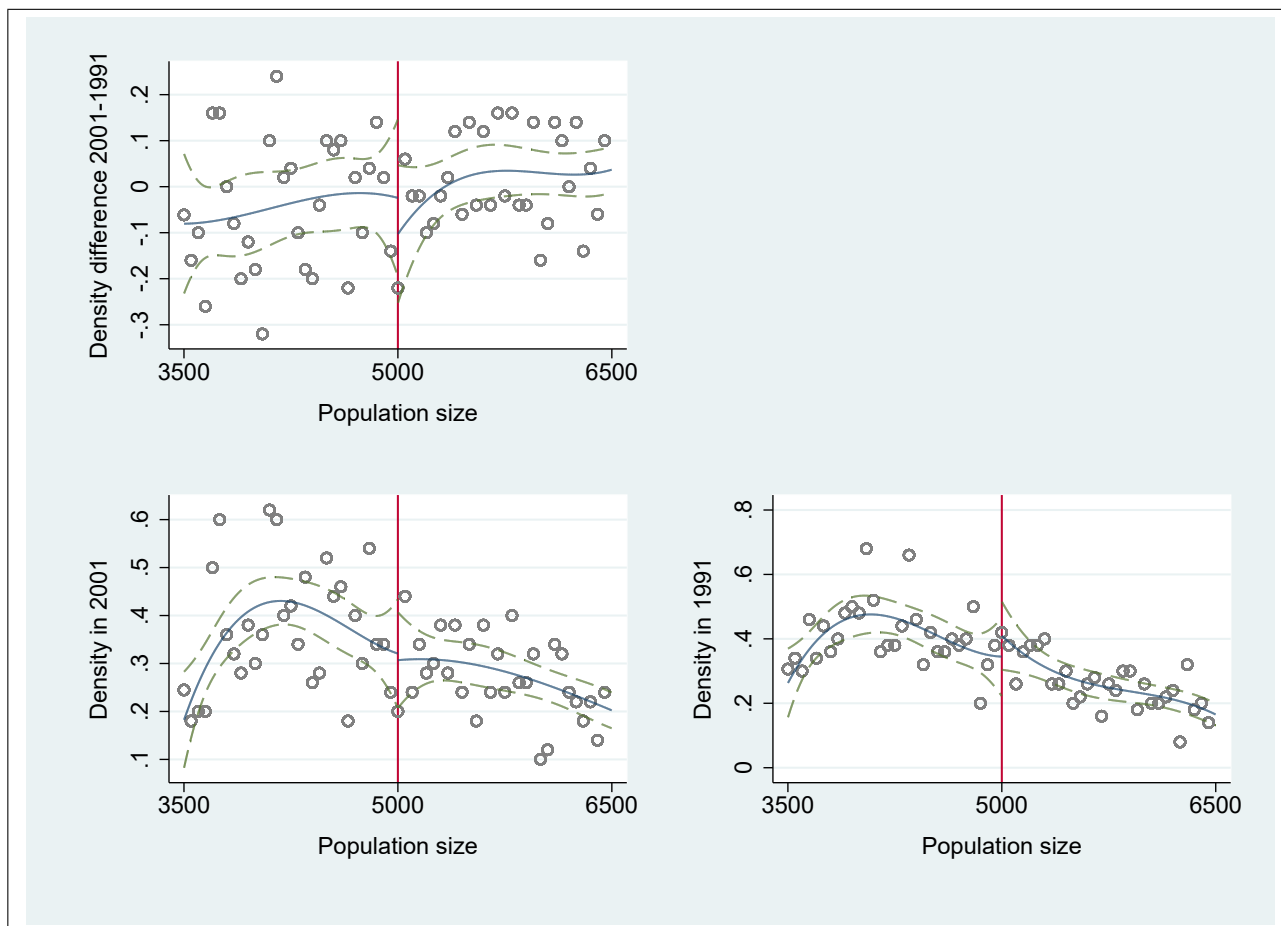
Notes. Municipalities between 3,500 and 7,000 inhabitants; budget years 1998, 2003, and 2004. Diff-in-disc estimates of the impact of relaxing fiscal rules on policy outcomes and tax instruments below 5,000 after 2001. Estimation method: Local Linear Regression with two optimal bandwidth h , as in equation (1). The optimal bandwidth h is estimated either following Calonico, Cattaneo, and Titiunik (2014a, 2014b), or implementing the cross-validation algorithm proposed by Ludwig and Miller (2007). All policy outcomes are per capita and in 2009 Euros. Significance at the 10% level is represented by *, at the 5% level by **, and at the 1% level by ***.

Figure A1: Pre-trends for difference-in-differences design



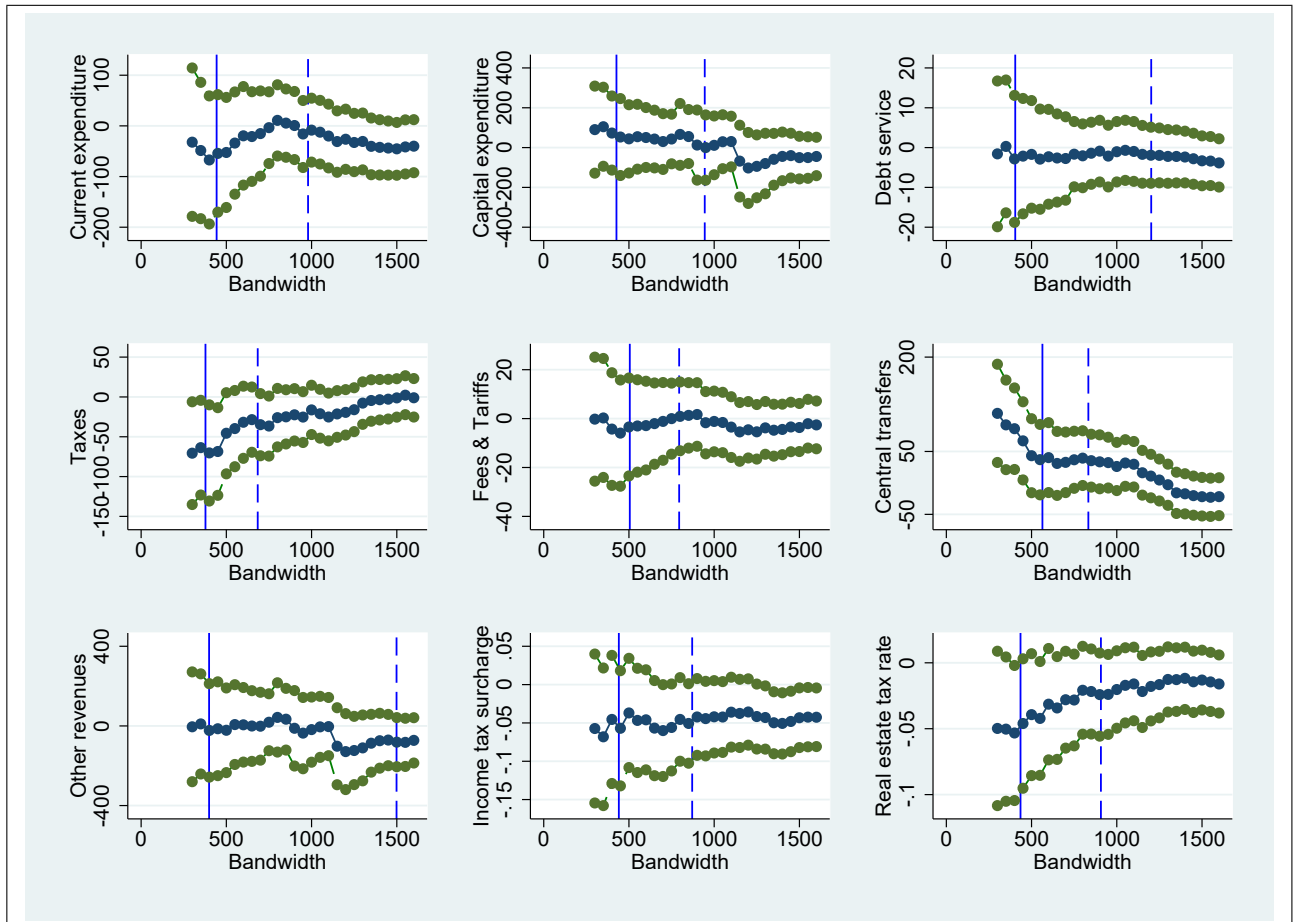
Notes. The graphs report the coefficients in a difference-in-differences specification, when the treatment defined as being below 5,000 inhabitants for each year. The regression includes town and year fixed effects. For each year, we report the point estimate and the 95% confidence interval. The coefficient on the year 2000 is the omitted category, for which confidence interval is obtained as the mean of the confidence interval in the years 1999 and 2001.

Figure A2: Density tests



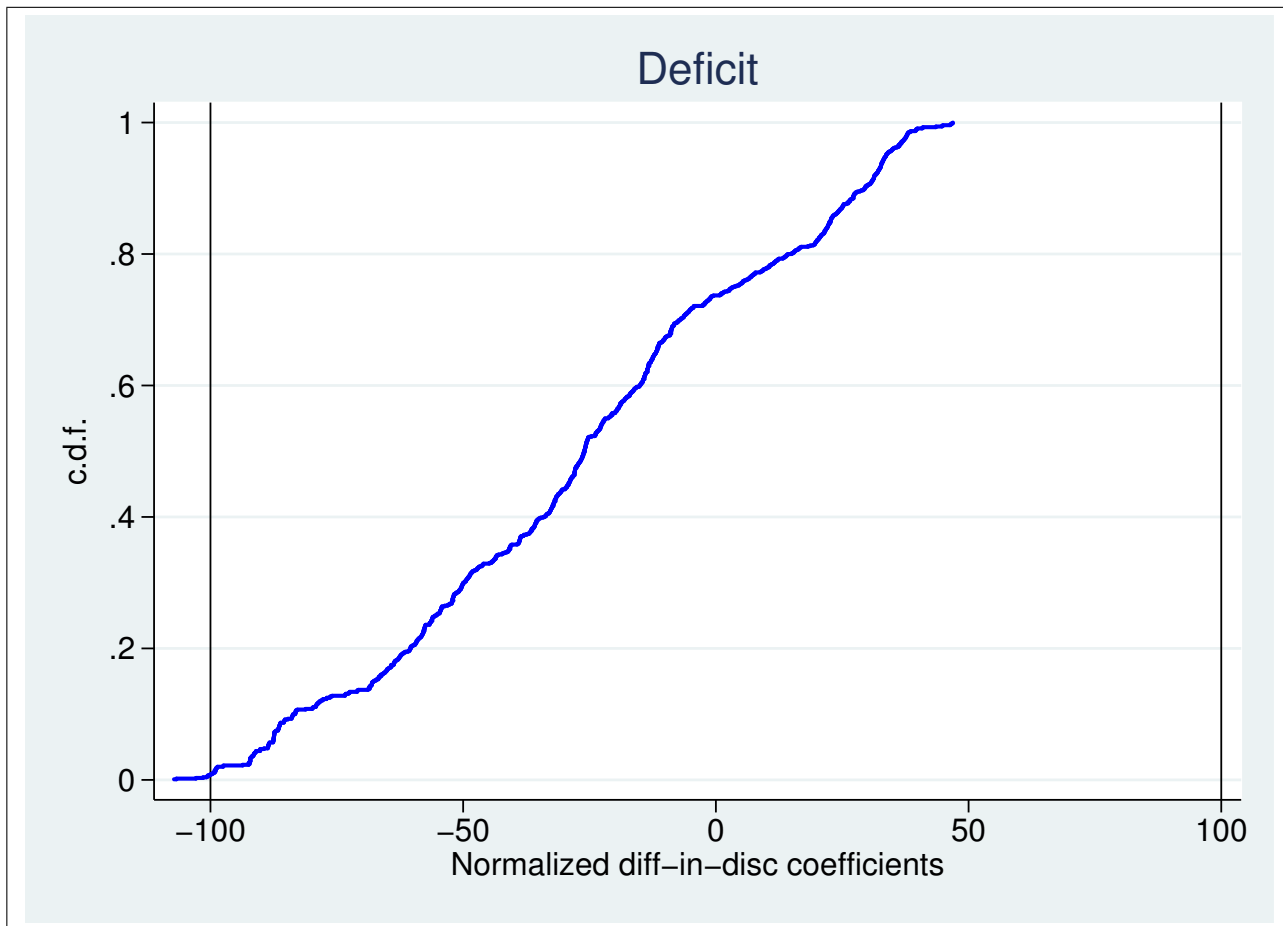
Notes. Test of the continuity at 5,000 of: (i) the difference between the density in the 2001 Census and in the 1991 Census (top graph); (ii) the density in the 2001 Census (bottom left graph); and (iii) the density in the 1991 Census (bottom right graph). The central line is a spline 3^{rd} -order polynomial fit in population size; the lateral lines represent the 95% confidence interval. Scatter points are averaged over intervals of 50 inhabitants.

Figure A3: Sensitivity to bandwidth selection



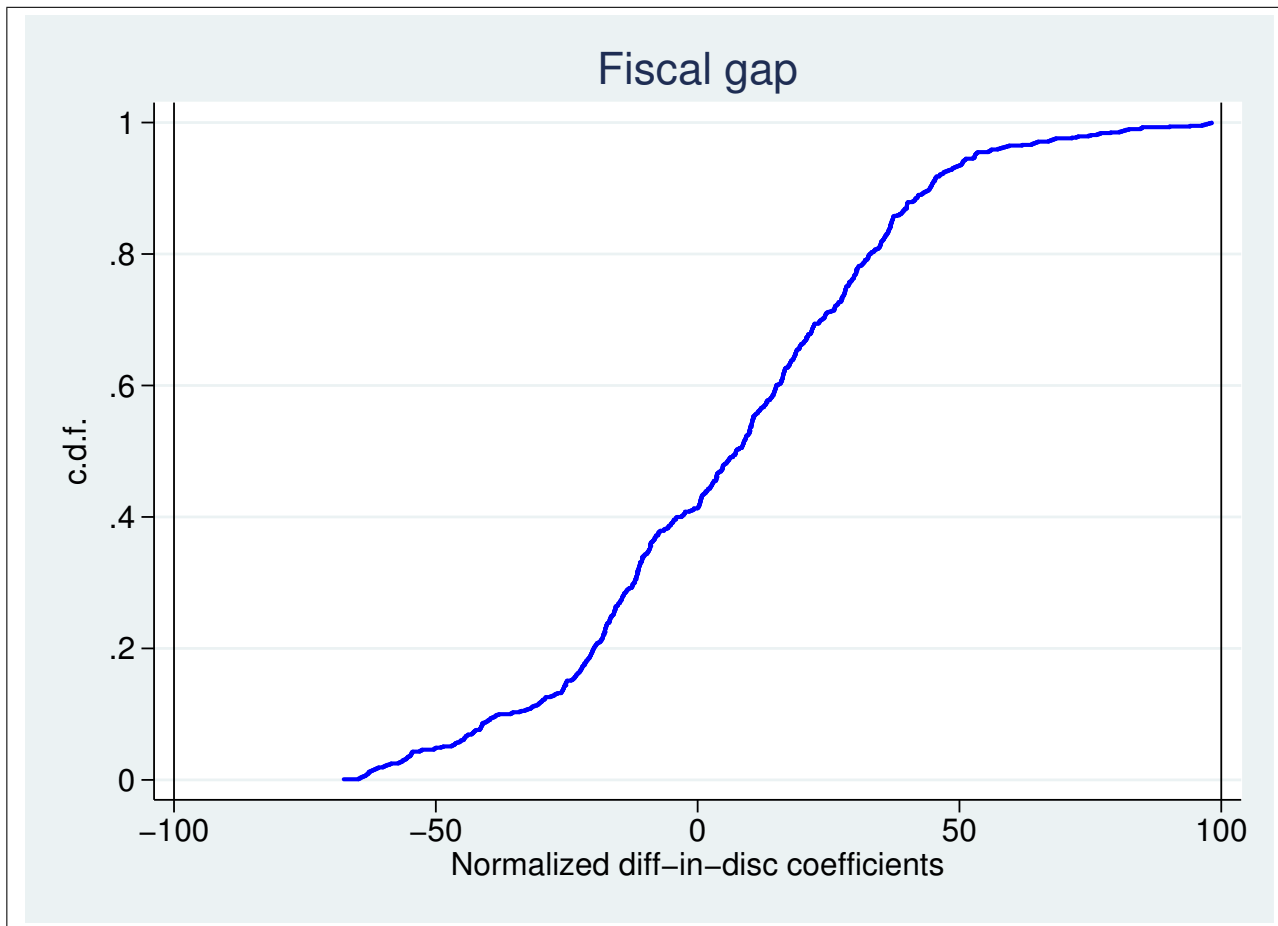
Notes. Difference in discontinuities. Vertical axis: diff-in-disc coefficients. Horizontal axis: bandwidth used to estimate the reported diff-in-disc coefficients.

Figure A4: Placebo tests for deficit



Notes. Placebo tests based on permutation methods for deficit. The figure reports the empirical c.d.f. of the normalized point estimates from a set of diff-in-disc estimations at 500 false thresholds below and 500 false thresholds above the true threshold at 5,000 (namely, any point from 4,900 to 4,400 and any point from 5,100 to 5,600). Estimation method: spline polynomial approximation with 3rd-order polynomial. The vertical lines indicate our benchmark estimate for deficit from Table 4 (i.e., true coefficient normalized to 100) and its negative value.

Figure A5: Placebo tests for fiscal gap



Notes. Placebo tests based on permutation methods for fiscal gap. The figure reports the empirical c.d.f. of the normalized point estimates from a set of diff-in-disc estimations at 500 false thresholds below and 500 false thresholds above the true threshold at 5,000 (namely, any point from 4,900 to 4,400 and any point from 5,100 to 5,600). Estimation method: spline polynomial approximation with 3^{rd} -order polynomial. The vertical lines indicate the normalized benchmark estimate for fiscal gap from Table 4 (i.e., true coefficient normalized to 100) and its negative value.